

A Novel SNPs of KISS1 Gene Strongly Associated with Litter Size in Indonesian Goat Breeds

by Sutopo Sutopo

Submission date: 30-Aug-2022 12:12PM (UTC+0700)

Submission ID: 1889252483

File name: 37574-Article_Text-185012-1-10-20220816.pdf (1.06M)

Word count: 12302

Character count: 56797



A Novel SNPs of KISS1 Gene Strongly Associated with Litter Size in Indonesian Goat Breeds

A. Febriana^{a,b}, S. Sutopo^{a,*}, E. Kurnianto^a, & W. Widiyanto^a

^aFaculty of Animal and Agricultural Sciences, Diponegoro University
Prof. Soeda Street, Tembalang Campus, Semarang 50275, Indonesia

^bIndonesian Center of Livestock Training (ICLT) Batu, Ministry of Agriculture of Indonesia

Songgoriti Street 24, Batu, East Java 65312, Indonesia

*Corresponding author: drsutopo36@gmail.com

(Received 13-09-2021; Revised 30-11-2021; Accepted 07-12-2021)

ABSTRACT

Kisspeptin is a protein encoded by the KISS1 gene which behaves as a key role by stimulating gonadotropin releasing hormone (GnRH) neuron activity directly in the reproductive axis. The objective of the present study was to determine the genetic diversity within intron 1 of KISS1 gene and to verify their association with fecundity traits which can be devoted as a marker assisted selection (MAS) for breeding selection. This study was established on three Indonesian native goat populations (Kacang, Kejobong, and Senduro). The PCR products were then sequenced in both directions. The DNA sequencing alignment resulted fifteen variants (one indel and fourteen SNPs), with SNP1, SNP2, SNP3, and SNP9 being novel single nucleotide polymorphisms (SNPs) of KISS1 gene intron 1. Genotype, haplotype, and parity were significantly associated with litter size. SNP8, SNP9, and SNP10 were correlated with overall means of litter size (LS) and LS at the first and the third parities ($p < 0.05$). Additionally, novel SNP9 were in remarkably strong linkage disequilibrium with SNP8 and SNP10 ($D' = 1.00$; $r \geq 0.58$; $\chi^2 \geq 13.38$), and allele A had putative binding sites for the NFIC which plays an important role in activating the expression of KISS1 gene. The H2 haplotype (CATAGCGCAACGCT) was found to have the highest litter size ($p < 0.0001$). CC genotype at SNP8, AA genotype at novel SNP9, GA genotype at SNP10, and H2 haplotype were the excellent genotypes and haplotype that associated with the superior LS ($p < 0.05$). Therefore, this result led to presume that these three SNPs and H2 haplotype can be acknowledged as prominent genetic markers for goat-breeding selection.

Keywords: haplotype; KISS1 gene; linkage disequilibrium; litter size; polymorphisms

INTRODUCTION

Goats were reared for several reasons, including their abilities to adapt in diverse ecosystems (frigid, harsh, and arid zones), adaptive under low input environments, tolerance to heat stresses, diseases, and parasites, and their abilities to provide socioeconomics, cultures, and religious benefits, as well as cash readily for immediate needs and meaningful income among poor households. Indigenous goats have been part of rustic subsistence in many developing countries (Miller *et al.*, 2012; Kaumbata *et al.*, 2020). Nonetheless, native goats have been extensively reared in Indonesia, resulting in a negative genetic correlation among adaptation and production traits. Therefore, it might be hard to compromise due to selection for production efficiency (Gama & Bressana, 2011).

The goat population in Indonesia is nearly nineteen million, contributing 72.553 tons of meat per year from 7.144.010 heads (FAOSTAT, 2019). The Indonesian Ministry of Agriculture (2020) reported that goat meat redounds 1.8% of national meat productions. The

import of goat meat products reached 1.49%, and total goat imports were 387.663 heads. This condition demonstrated that goat population's scale-up remains critical to meet the national needs.

Domestic animal genetic diversity is essential for meeting current production needs in various environments in the future and changing breeding objectives, and long-term genetic improvements (Liu *et al.*, 2019) through enhancement of the reproduction rate of goat breeds (Ahlawat *et al.*, 2015). Nevertheless, the progress in reproductive ability traits is low due to the long generation interval (Rupp *et al.*, 2016). On the other hand, native breeds/populations are critically threatened to become extinct without recorded phenotypic and genotypic data (Periasamy *et al.*, 2017). Traditional breeding programs and/or selection procedures using genetic information obtained through marker-assisted selection could improve the prolific traits, economic gain, and genetic gain (El-Tarabany *et al.*, 2017).

Identifying which genes are responsible for high fecundity traits/litter size (LS) is crucial. According to genetic research, KISS1 gene is a major fecundity gene

in goats. Polymorphisms of KISS1 gene were associated with higher LS (Cao *et al.*, 2010; An *et al.*, 2013). In mammals, kisspeptins (Kp) are encoded by the KISS1 gene and play an important role in reproductive traits. Kp has been identified as pivotal aspects and crucial gatekeepers of reproductive action and maturation, puberty onset, sexual differentiation of the brain, adult regulation of gonadotropin (GnRH) secretion, and the metabolic control of fertility (Pinilla *et al.*, 2012). KISS1 gene in goats has been located in chromosome 16. KISS1 gene consists of two coding regions (exons) and one single non-coding region (intron), and the transcript length is 408 bp and encodes 135 amino acids. This gene reaches around 2.62 kilo bases (ENSCHIT0000037363.1).

Previous research in Indonesia characterized the polymorphisms of KISS1 gene intron 1 and exon 1 of Ettawa Grade (EG), although the researchers could not find the association with LS and other reproductive traits (Mulyono *et al.*, 2019; Hardyta *et al.*, 2020). However, to make the best use of limited selection funds, specific indigenous breeds must be prioritized for selection. Therefore, further research in other fragments of KISS1 gene is needed in Indonesian native goat breeds. Three goat breeds in Indonesia that are well-known and registered at the nationwide level, namely Kacang (KC) and Kejobong (KJ) goats, are meat-purpose breeds, while Senduro (SD) goat is a dual-purpose breed. The KC goat is the indigenous goat in Indonesia and Malaysia, commonly known throughout South East Asia. They have a high fecundity and heat tolerance in harsh environments despite limited potential growth (Tsukahara *et al.*, 2008). KJ goat is a crossbreed between KC and EG goats (Lestari *et al.*, 2018), whereas SD was identical with EG goats (Ciptadi *et al.*, 2019).

No studies have found a strong linkage between SNPs associated with LS of KISS1 gene in Indonesian native goat breeds. Hence, this research was conducted to determine the genetic variations of intron 1 of KISS1 gene in Indonesian native goat breeds and examine the relationship of its SNPs and haplotype with fecundity traits that could be used as a marker-assisted selection (MAS) for the genetic breeding selection.

MATERIALS AND METHODS

Selection of Animals, Collection of Data, and Biological Substances

In the current research, 90 female goats (does) were selected based on the breed/phenotypic characteristic recognized from the specific breed, doe's parity (the first to the fifth parities), LS, and farms from different regions. The samples were collected from February to June 2020. Three different breeds of goats were used, i.e., Kacang (KC), Kejobong (KJ), and Senduro (SD), with 30 samples each. The other research on gene polymorphism associated with economic traits on goats used fewer samples (Abdel-Aziem *et al.*, 2018; Antonius *et al.*, 2020; Sasi *et al.*, 2020; Rahmatalla *et al.*, 2020; Rossi *et al.*, 2017). They were reared by three groups of farmers in their native environment and uncorrelated. All

the animals used at the present study were under the standard rule of animal treatment designated by the Animal Ethics Committee of the Faculty of Animal and Agricultural Sciences, Diponegoro University (No. 57-06/A-4/KEP-FPP). The farmers implicated in the study were notified and approved to use the animal in the present research.

Five milliliters of whole blood samples were collected from the jugular vein and stored in a sterile EDTA vacutainer tube at -20 °C. The genomic DNA was extracted using the GeneJET Genomic DNA Purification Kit (Thermo Scientific, USA), conforming to the manufacturer's guidance. The quantity and quality of genomic DNA extraction were established using agarose gel electrophoresis (1%) and Nanodrop spectrophotometer Uvidoc HD6 (UVItec Ltd., Cambridge, UK). The electrophoresis showed a clear single band on agarose 1%, and the OD 260/280 ratio ranged ≥ 1.7 (according to the kit protocol), demonstrating a good quality of DNA extraction.

The sequence of KISS1 gene of *Capra hircus* breed Jining Grey (GenBank Accession Number GU142847.1) was retrieved to design a pair of primers (F: 5'-GCTCAGTGGCCAGGAATCTG-3'; R: 5'-GCTCATAGCAGGGCCTCAAA-3') using Primer3 Plus software to amplify a 1061 bp fragment of intron 1 of KISS1 gene.

Polymerase Chain Reaction (PCR) and DNA Sequencing

The amplification reaction was accomplished in 50 μ L volume containing 4 μ L DNA extraction (20-30 ng/ μ L), 1 μ L for each primer (10 pmol/ μ L), 19 μ L ddH₂O, and 25 μ L of MyTaq Red Mix Bioline (1st BASE).

PCR cycling program consisted of initial denaturation at 95 °C for 5 min, followed by 35 cycles of denaturation at 94 °C for 30 s, annealing at 60 °C for 30 s, extension at 72 °C for 30 s, and final extension at 72 °C for 7 min. Amplification products were defined by electrophoresis in 2% agarose gel (Invitrogen, Life Technologies Co, CA) at 100V for 30 min alongside 100 bp DNA marker (Geneaid, 1st BASE). The bands were captured under UV light and the gel appearance was documented using digital gel imager equipment (UV Transilluminator, Uvitec Cambridge). The KISS1 gene-PCR developed 1061 bp of DNA fragment, as shown in Figure 1. The PCR products (n=90) were sequenced in two directions using commercial service. Due to the poor DNA sequences, only 80 nucleotide sequences were used to screen the variation of nucleotides.

Statistical and Data Analysis

SNP genotyping. The multiple nucleotide sequences were aligned by software MEGA X 10.1 version (Kumar *et al.*, 2018) and compared with the sequence from the GenBank assembly accession No: GU142847.1 using BLAST program (www.ncbi.nlm.nih.gov/blast/). The recognized SNPs were then combined to establish haplotypes (Swain *et al.*, 2020).

Linkage disequilibrium and association analysis. The number of haplotypes, linkage disequilibrium (D'), and correlation coefficient (r) test were calculated by DnaSP 6th version (Rozas *et al.*, 2017). The significance of χ^2 value was compared using the Bonferroni correction for multiple tests within D' (Fu *et al.*, 2014). Genotype and allele frequencies were calculated using the direct counting methods following Nei & Kumar (2000):

$$\chi_{ii} = n_{ii} / n$$

where x_{ii} was the genotype frequency of genotype ii , n_{ii} was the number of samples with genotype ii , and n was the number of total samples.

$$x_i = \frac{(2n_{ii} + \sum_{j \neq i} n_{ij})}{2n}$$

where x_i was the allele frequency of allele i , n_{ii} was the number of samples with genotype ii , n_{ij} was the number of samples with genotype ij , and n was the number of total samples.

Expected heterozygosity and Hardy Weinberg Equilibrium (HWE) were estimated using Arlequin Software Package version 3.5 (Excoffier *et al.*, 2010). Association between individual SNPs and haplotypes with reproductive traits in three goat breeds were investigated using fixed General Linear Model (GLM) of SAS Software (SAS[®] University Edition, 2018). Multiple comparisons of the means were analyzed using Tukey's post hoc.

The fixed model used for prolific traits is:

$$y_{ijklm} = \mu + G_i + H_j + F_k + P_l + B_m + e_{ijklm}$$

where y_{ijklm} is the observed value of a dependent variable (LS); μ is the overall mean of the population; G_i is the fixed effect of i th genotype ($i = 1, 2, 3$); H_j is the fixed effect of j th haplotypes ($j = 1, 2, \dots, 14$); F_k is the fixed effect of k th farm group ($k = 1, 2, 3$); P_l is the fixed effect of l th parities ($l = 1, 2, 3, 4, 5$); B_m is the fixed effect of m th breeds ($m = 1, 2, 3$) and e_{ijklm} is the random residual for y_{ijklm} . When there was $p < 0.05$, it was examined significant statistically.

Prediction of transcription factor binding sites (TFBSs). The nature of targeted SNPs was predicted using the variant effect predictor (VEP) tool (<https://asia.ensembl.org/Multi/Tools/VEP>). The Animal TFDB version v3.0 (<http://bioinfo.life.hust.edu.cn/AnimalTFDB/>) (Hu *et al.*, 2018) was used to explore and predict transcription factor binding sites (TFBSs) due to the identified SNPs in the intron 1 KISS1 gene.

RESULTS

PCR and Analysis of Intron 1 KISS1 Gene Sequence

According to the electrophoresis results, a single fragment of 1061 bp in length corresponded to the main part of KISS 1 gene at intron 1. The fragments were separated using 2% agarose gel (Figure 1), indicating that amplification product size was consistent with the

target and had a good specificity, allowing for immediate sequencing in both directions.

The sequence alignment analysis revealed one insertion/deletion and fourteen polymorphic sites in the intron 1 KISS1 gene on three Indonesian native goat breeds (Table 1). The sequences of different genotypes are shown in the appendix. The nucleotide's numbering was based on the goat KISS1 gene sequence (GenBank accession number: GU142847.1) related to intron 1.

It is proper to address that one indel and five SNPs (SNP4, SNP6, SNP11, SNP12, and SNP13) out of fifteen mutations recognized in recent studies conform to prior research (Cao *et al.*, 2010; An *et al.*, 2013). The current study detected four novel SNPs of KISS1 gene at intron 1 in Indonesian native goat breeds, which are SNP1, SNP2, SNP3, and SNP9.

Allele Frequencies, Genotype Frequencies, Expected Heterozygosity (H_e), and Hardy Weinberg Equilibrium (HWE)

Based on the nucleotide sequence of KISS1 gene intron 1 fragments, the allele and genotype frequencies of each SNPs in 3 Indonesian native goat breeds were defined. All the three possible genotypes were presented in most of the four novel SNPs in KISS1 gene. Allele and genotype frequencies were given in Table 2. The ten mutations (g.1960-1977 DelTATGAGTAGCCCCCTGC, SNP1, SNP7, SNP8, SNP9, SNP10, SNP11, SNP12, SNP13, and SNP14) were genotyped in three goat breeds. However, polymorphisms at SNP1, SNP8, and SNP12 could not be detected in SD goat (monomorphic). Polymorphisms at SNP13 were discovered only in KJ goats. Therefore, polymorphism at SNP14 and wild type (II) at g.1960-1977 DelTATGAGTAGCCCCCTGC was found in SD goats only.

Hardy Weinberg Equilibrium (HWE) and expected heterozygosity (H_e) were calculated based on the genotype frequencies in all breeds (Table 3). Several deviations in HWE were found between breeds in the same site.

In all populations, we found that genotypes at one indel and four SNPs (g.19601977DelTATGAGTAGCCCCCTGC, SNP8, SNP9, SNP11, and SNP12) were not fit



Figure 1. A 1061 bp PCR product of KISS1 gene. M: Marker (DNA ladder 100 bp); KC= Kacang goats; KJ= Kejombang goats; SD= Senduro goats.

Table 1. SNPs detected in intron 1 of KISS1 gene in Indonesian native goat breeds

SNP/Indel	SNP position	Variant ID	Type of change	Association references
g.1960-1977Del TATGAGTAGCCCCCTGC	g.1960-1977	-	Insertion and deletion (indel)	Reported – associated (Cao <i>et al.</i> , 2010)
g.1978C>T (SNP1)	g.1978	-	Transition	Novel
g.2055A>C (SNP2)	g.2055	-	Transition	Novel
g.2064T>A (SNP3)	g.2064	-	Transversion	Novel
g.2124T>A (SNP4)	16:1341746	rs638493037	Transversion	Reported – not associated (An <i>et al.</i> , 2013)
g.2196G>C (SNP5)	16:1341733	rs645841275	Transversion	Reported (http://asia.ensembl.org)
g.2270C>T (SNP6)	16:1341600	rs662420130	Transition	Reported – not associated (An <i>et al.</i> , 2013)
g.2360A>G (SNP7)	16:1341510	rs669310075	Transition	Reported (http://asia.ensembl.org)
g.2425C>G (SNP8)	16:1341445	rs648407208	Transversion	Reported (http://asia.ensembl.org)
g.2436A>G (SNP9)	g.2436	-	Transition	Novel
g.2459G>A (SNP10)	16:1341411	rs655206996	Transition	Reported (http://asia.ensembl.org)
g.2489T>C (SNP11)	16:1341381	rs667348361	Transition	Reported – associated (An <i>et al.</i> , 2013)
g.2510G>A (SNP12)	16:1341360	rs641640354	Transition	Reported – associated (An <i>et al.</i> , 2013)
g.2540C>T (SNP13)	16:1341330	rs653606341	Transition	Reported – associated (An <i>et al.</i> , 2013)
g.2601T>A (SNP14)	16:1341269	rs665121106	Transversion	Reported (http://asia.ensembl.org)

Note: SNP position was based on ENSCHIT00000037363.1 (known variants in this transcript) or NCBI (GenBank Accession Number GU142847.1) for the unknown variants in this transcript).

Table 2. Allele distribution and genotype frequencies of the SNPs analyzed in the KISS1 intron 1 of Indonesian goats

Breeds		Allele frequency				Genotype frequency				
Position	Allele	KC	KJ	SD	Overall	Genotype	KC (n)	KJ (n)	SD (n)	Overall (n)
g.1960-1977	I	0.07	0.06	0.44	0.19	II	0.00 (0)	0.00 (0)	0.38 (15)	0.13 (15)
DelTATA	D	0.93	0.94	0.56	0.80	ID	0.14 (6)	0.13 (5)	0.12 (4)	0.13 (15)
GTAGCC						DD	0.86 (18)	0.87 (21)	0.50 (11)	0.74 (50)
CCCTGC										
SNP1	C	0.86	0.88	1.00	0.91	CC	0.71 (16)	0.75 (19)	1.00 (25)	0.83 (60)
	T	0.14	0.12	0.00	0.09	CT	0.29 (10)	0.25 (10)	0.00 (0)	0.17 (20)
SNP7	A	0.57	0.13	0.31	0.33	AA	0.29 (10)	0.00 (0)	0.00 (0)	0.09 (10)
	G	0.43	0.87	0.69	0.67	AG	0.57 (16)	0.25 (8)	0.63 (21)	0.48 (45)
						GG	0.14 (3)	0.75 (15)	0.37 (7)	0.43 (25)
SNP8	C	0.79	0.44	1.00	0.70	CC	0.71 (19)	0.38 (11)	1.00 (30)	0.65 (60)
	G	0.21	0.56	0.00	0.30	CG	0.14 (5)	0.12 (5)	0.00 (0)	0.09 (10)
						GG	0.14 (2)	0.50 (8)	0.00 (0)	0.26 (10)
SNP9	A	0.79	0.44	0.88	0.70	AA	0.72 (20)	0.38 (12)	0.88 (28)	0.65 (60)
	G	0.21	0.56	0.12	0.30	AG	0.14 (6)	0.12 (4)	0.00 (0)	0.09 (10)
						GG	0.14 (2)	0.50 (7)	0.12 (1)	0.26 (10)
SNP10	G	0.50	0.81	0.69	0.67	GG	0.29 (6)	0.75 (19)	0.38 (10)	0.48 (35)
	A	0.50	0.19	0.31	0.33	GA	0.43 (10)	0.12 (3)	0.62 (17)	0.39 (30)
						AA	0.29 (10)	0.13 (5)	0.00 (0)	0.13 (15)
SNP11	T	0.21	0.19	0.63	0.35	TT	0.14 (5)	0.12 (5)	0.63 (25)	0.30 (35)
	C	0.79	0.81	0.37	0.65	TC	0.14 (5)	0.12 (5)	0.00 (0)	0.09 (10)
						CC	0.72 (13)	0.80 (15)	0.37 (7)	0.61 (35)
SNP12	G	0.64	0.56	0.88	1.00	GG	0.57 (16)	0.50 (16)	1.00 (33)	0.65 (65)
	A	0.36	0.44	0.12	0.00	GA	0.14 (5)	0.13 (5)	0.00 (0)	0.09 (10)
						AA	0.29 (2)	0.37 (3)	0.00 (0)	0.26 (5)
SNP13	C	1.00	0.94	1.00	0.98	CC	1.00 (24)	0.88 (24)	1.00 (27)	0.96 (75)
	T	0.00	0.06	0.00	0.02	CT	0.00 (0)	0.12 (5)	0.00 (0)	0.04 (5)
SNP14	T	1.00	1.00	0.88	0.96	TT	1.00 (23)	1.00 (27)	0.75 (20)	0.91 (70)
	A	0.00	0.00	0.12	0.04	TA	0.00 (0)	0.00 (0)	0.25 (10)	0.09 (10)

Note: KC= Kacang goats; KJ= Kejobong goats; SD= Senduro goats; Overall= allele and genotype frequencies of three goat breeds; n= number of samples. The genotyped individuals are represented by the numbers in the brackets.

Table 3. Expected heterozygosity and Chi Square of SNPs determined at intron 1 of KISS1 gene

Locus	Kacang goats		Kejobong goats		Senduro goats		Overall	
	He	χ^2	He	χ^2	He	χ^2	He	χ^2
g.19601977DeITATGAGTAGCCCCCTGC	0.13	0.04	0.12	0.04	0.49	4.5D	0.31	7.89D
SNP1	0.24	0.19	0.22	0.16	0.00	-	0.16	0.21E
SNP7	0.49	0.19	0.22	0.16	0.43	1.65	0.44	0.18E
SNP8	0.33	2.32	0.49	4.5D	0.22	8.0D	0.42	14.5D
SNP9	0.34	2.32	0.49	4.5D	0.22	8.0D	0.42	14.5D
SNP10	0.50	0.14	0.30	2.78	0.43	1.65	0.44	0.28E
SNP11	0.34	2.32	0.30	2.78	0.47	8.0D	0.45	15.0D
SNP12	0.46	3.32	0.49	4.5D	0.22	8.0D	0.42	14.5D
SNP13	0.00	-	0.12	0.04	0.00	-	0.04	0.01E
SNP14	0.00	-	0.00	-	0.22	0.16	0.08	0.05E

Note: E= equilibrium in HWE, if χ^2 value less than 3.841 (χ^2 distribution table: 0.05; df= 1); D= disequilibrium in HWE if χ^2 value more than 3.841; (-)= the χ^2 value could not be calculated because the loci are monomorphic; Overall= the value of three Indonesian native goat breeds.

to HWE, as was indicated by χ^2 calculation was greater than χ^2 in the Table 3. The expected heterozygosity (He) ranged from 0.04 to 0.45. KC goats were in HWE in all SNPs sites. KJ goats were not under HWE at SNP8, SNP9, and SNP12 ($\chi^2 > 3.841$), while SD goats were not appropriate in HWE at g.19601977DeITATGAGTAGCCCCCTGC, SNP8, SNP9, SNP11, and SNP12 ($\chi^2 > 3.841$).

Association Analysis Based on Genotype

The overall mean of LS was calculated 2.23 ± 0.09 with a range from one to five. The mean LS for KC, KJ, and SD are 2.17 ± 0.65 , 2.33 ± 0.84 , and 2.2 ± 0.96 , respectively, and the frequency of the birth type of each goat breed was given in Table 4. The overall frequency of single kids was 18.89%, twins was 43.3%, triplets was 34.44%, and quadruplets or more was 3.33%.

The correlation study among LS and fixed effects (goat breeds, parity, haplotypes, farms, and genotypes) were done using fifteen variants of KISS1 gene at intron 1 in three goat breeds. In the current research, the goat breed and farm have no significant correlation with LS (Table 5).

The parity had a significant association with LS ($p < 0.0001$). The greatest LS was found in the third to the fifth parities, while the lowest LS is found in the second parities (Table 5). Furthermore, due to the lack of sample in the fourth and the fifth parities, further statistical analysis was conducted using the first to the third parities. The least square means with standard error of litter size for different genotypes and parities are shown in Table 6. The overall mean for the first

parity, the second parity, and the third parity were 2.67 ± 0.45 , 1.88 ± 0.09 , and 3.00 ± 0.00 , respectively. LS at the third parity differed significantly from LS at the second parity. CC genotype at SNP1 and SNP13 correlated significantly with higher LS at the first and second parities ($p < 0.05$). However, there was no significant association between genotypes at g.1960-1977 DeITATGAGTAGCCCCCTGC and SNP14 at the first and the second parities.

The association analysis between different genotypes and LS on three Indonesian native goat breeds (Table 7) showed no significant difference in five SNPs (SNP2, SNP3, SNP5, and SNP6),

Table 5. Means \pm SE of litter size based on breeds, parities, and farms

Specification	p Value	Category	Means \pm SE
Breeds	p= 0.1287	Kacang	2.20 ± 0.15
		Kejobong	2.20 ± 0.15
		Senduro	2.67 ± 0.23
Farms	p= 0.1528	Farm 1	2.50 ± 0.15
		Farm 2	2.00 ± 0.15
		Farm 3	2.00 ± 0.23
Parities	p<0.0001	1 st parity	2.67 ± 0.45^a
		2 nd parity	1.88 ± 0.09^b
		3 rd parity	3.00 ± 0.00^a
		4 th parity	3.00 ± 0.15^a
		5 th parity	3.00 ± 0.22^a

Note: Means in the same column with different superscripts at the same specification differ significantly ($p < 0.05$); SE= standard error.

Table 4. The mean litter size in three Indonesian native goat breeds and frequency of birth type

Breeds	Means \pm SE	Frequency (%)			
		Single kids	Twins	Triplets	Quadruplets or more
Kacang	2.17 ± 0.65	13.33	56.67	30.00	-
Kejobong	2.33 ± 0.84	16.67	40.00	36.67	6.67
Senduro	2.20 ± 0.96	26.67	33.33	36.67	3.33
Overall	2.23 ± 0.09	18.89	43.30	34.44	3.33

Note: Overall= mean of three goat breeds; SE= standard error.

thus it was not be included in further discussion. In addition, 1 indel and 9 SNPs (g.1960-1977 DelTATGAGTAGCCCCCTGC, SNP1, SNP7, SNP8, SNP9, SNP10, SNP11, SNP12, SNP13, and SNP14) revealed a correlation between LS and genotypes in three goat breeds ($p<0.05$). Wild genotype that significantly affect LS were CC genotype at SNP1 (2.58 ± 0.14 ; $p<0.05$), CC genotype at SNP8 (2.58 ± 0.14 ; $p<0.05$), AA genotype at SNP9 (2.58 ± 0.14 ; $p<0.05$), GG genotype at SNP12 (2.54 ± 0.13 ; $p<0.05$), CC genotype at SNP13 (2.47 ± 0.11 ; $p<0.05$), and TT genotype at SNP14 (2.43 ± 0.13 ; $p<0.05$).

At g.1960-1977 DelTATGAGTAGCCCCCTGC, individuals with ID genotype had higher LS (3.0 ± 0 ; $p<0.05$). The other valuable heterozygote genotype with prolific traits was AG genotype at SNP7 (2.6 ± 0.15 ; $p<0.05$), GA genotype at SNP10, and TC genotype at SNP11 (3.00 ± 0.18 ; $p<0.05$).

Association Analysis of Haplotypes

Strong linkage disequilibrium (D') between SNPs of KISS1 gene intron 1 has been identified in Indonesian native goat breeds. The D' value range from 0.042 to 1, and coefficient of correlation (r) range between 0.01 to 1 (Table 8). The DnaSP software distinguishes 14 haplotypes in intron 1 of the KISS1 gene using 15 SNPs in the non-coding region from three goat breeds.

The haplotypes were discovered to correlate significantly with LS ($p<0.0001$). The goats having haplotype 2 (CCATAGCGCAACGT) had the highest LS (4 ± 0.33), while haplotype 11 (CATTGCACAGTGCT) had the lowest LS (1 ± 0.31). Association among haplotype polymorphisms of KISS1 gene with LS was available in Table 9.

TFBS Prediction of SNP9

In the current study, the prominent level variant (SNP9) correlated with higher litter size was used to predict transcription factor binding sites for the intron region of KISS1 gene of goats. The VEP analysis predicted that this mutation has a transcripture type and a protein-coding biotype, indicating a regulatory role in protein expression. AnnotTFDB was used to screen any TFBS alteration due to the native and mutant variants of the investigated fragment of the KISS1 gene. In the intron 1 of the KISS1 gene sequences where the A/G polymorphism was discovered, two transcription factors, NFIC and ESR1, were discovered to bind (Table 10).

DISCUSSION

Several types of research about genes that affect the prolific trait in small ruminants were undertaken for

Table 6. Least square means and standard error of litter size of parities 1 to 3 in Indonesian native goat breeds

SNP/Indel	Genotype	N	Means \pm SE		
			Parity 1	Parity 2	Parity 3
g.1960-1977 DelTATGAGTAGCCCCCTGC	II	15	2.33 \pm 0.13	2.00 \pm 0.00	NM
	DD	50	1.80 \pm 0.18	1.67 \pm 0.10	3.00 \pm 0.00 ^a
	ID	15	2.33 \pm 0.13	2.00 \pm 0.20	2.33 \pm 0.13 ^b
SNP1	CC	60	2.33 \pm 0.13 ^a	1.90 \pm 0.09 ^a	2.60 \pm 0.10
	CT	20	1.00 \pm 0.00 ^b	1.50 \pm 0.11 ^b	NM
SNP7	AA	10	2.00 \pm 0.33	2.00 \pm 0.33 ^a	3.00 \pm 0.00 ^a
	AG	45	2.20 \pm 0.17	1.80 \pm 0.09 ^{ab}	2.33 \pm 0.13 ^b
	GG	25	1.50 \pm 0.11	1.50 \pm 0.11 ^b	3.00 \pm 0.00 ^a
SNP8	CC	60	2.25 \pm 0.14 ^a	1.82 \pm 0.09	2.60 \pm 0.10
	CG	10	1.50 \pm 0.17 ^b	1.50 \pm 0.17	NM
	GG	10	1.00 \pm 0.00 ^b	2.00 \pm 0.00	NM
SNP9	AA	60	2.25 \pm 0.14 ^a	1.82 \pm 0.09	2.60 \pm 0.10
	AG	10	1.00 \pm 0.00 ^b	2.00 \pm 0.00	NM
	GG	10	1.50 \pm 0.17 ^b	1.50 \pm 0.17	NM
SNP10	GG	35	1.57 \pm 0.12 ^b	1.71 \pm 0.08	3.00 \pm 0.00 ^a
	GA	30	2.67 \pm 0.21 ^a	2.00 \pm 0.13	2.33 \pm 0.13 ^b
	AA	15	1.67 \pm 0.25 ^b	1.67 \pm 0.25	3.00 \pm 0.00 ^a
SNP11	TT	35	1.85 \pm 0.11	1.71 \pm 0.08 ^b	2.50 \pm 0.17
	TC	10	2.50 \pm 0.17	2.50 \pm 0.17 ^a	2.50 \pm 0.17
	CC	35	2.00 \pm 0.24	1.67 \pm 0.14 ^b	3.00 \pm 0.00
SNP12	GG	65	2.15 \pm 0.14 ^a	1.83 \pm 0.89	2.60 \pm 0.10
	GA	10	2.00 \pm 0.00 ^a	2.00 \pm 0.00	NM
	AA	5	1.00 \pm 0.00 ^b	1.50 \pm 0.17	NM
SNP13	CC	75	2.07 \pm 0.12 ^a	1.86 \pm 0.08 ^a	2.60 \pm 0.10
	CT	5	1.00 \pm 0.00 ^b	1.00 \pm 0.00 ^b	NM
SNP14	TT	70	2.00 \pm 0.14	1.77 \pm 0.09	2.60 \pm 0.10
	TA	10	2.00 \pm 0.00	2.00 \pm 0.00	NM

Note: Means with different superscripts at the same column and SNP differ significantly ($p<0.05$); N=number of samples; SE= standard error; NM= not measured (no samples available during investigation).

Table 7. Average litter size \pm SE on different genotypes of KISS1 gene on Kacang, Kejobong, and Senduro goats

SNP/Indel	Genotype	N	Means \pm SE			
			Overall	Kacang goats	Kejobong goats	Senduro goats
g.1960-1977 DelTATGA GTAGCCC CCCTGC	II	15	2.33 \pm 0.13 ^a			2.33 \pm 0.13
	DD	50	2.20 \pm 0.16 ^b	2.00 \pm 0.16 ^b	2.00 \pm 0.16 ^b	3.00 \pm 0.67
	ID	15	3.00 \pm 0.00 ^a	3.00 \pm 0.00 ^a	3.00 \pm 0.00 ^a	3.00 \pm 0.00
p value			0.022	0.006	0.006	0.368
SNP1	CC	60	2.58 \pm 0.14 ^a	2.33 \pm 0.25	2.67 \pm 0.13 ^a	Monomorphic (2.67 \pm 0.23)
	CT	20	1.75 \pm 0.09 ^b	2.00 \pm 0.00	1.50 \pm 0.17 ^b	-
p value			0.001	0.295	<0.0001	-
SNP2	AC	10	2.50 \pm 0.17	2.00 \pm 0.00	Monomorphic (2.20 \pm 0.15)	3.00 \pm 0.00
	AA	70	2.36 \pm 0.13	2.25 \pm 0.19		2.60 \pm 0.28
p value			0.521	0.524		0.529
SNP3	TT	65	2.38 \pm 0.13	Monomorphic (2.20 \pm 0.15)	2.33 \pm 0.13	2.60 \pm 0.28
	TA	15	2.33 \pm 0.25	NM	2.00 \pm 0.33	3.00 \pm 0.00
p value			0.859		0.294	0.529
SNP4	AA	20	2.75 \pm 0.34	2.00 \pm 0.33	2.00 \pm 0.00	
	TT	55	2.27 \pm 0.10	2.33 \pm 0.13	2.33 \pm 0.25	5.00 \pm 0.00
p value	TA	5	2.00 \pm 0.00	NM	2.00 \pm 0.00	2.20 \pm 0.15
			0.128	0.294	0.584	<0.0001
SNP5	GC	15	2.33 \pm 0.13			2.33 \pm 0.13
	GG	65	2.38 \pm 0.13	Monomorphic (2.20 \pm 0.15)	Monomorphic (2.20 \pm 0.15)	3.00 \pm 0.43
p value			0.153			0.153
SNP6	TT	15	2.33 \pm 0.12	NM	NM	2.33 \pm 0.13
	CC	65	2.38 \pm 0.13	Monomorphic (2.20 \pm 0.15)	Monomorphic (2.20 \pm 0.15)	3.00 \pm 0.43
p value			0.153			0.153
SNP7	AG	45	2.60 \pm 0.15 ^a	2.50 \pm 0.17 ^a	2.50 \pm 0.17	2.20 \pm 0.15
	AA	10	2.50 \pm 0.17 ^a	2.50 \pm 0.17 ^a	NM	NM
p value	GG	25	1.75 \pm 0.19 ^b	1.00 \pm 0.00 ^b	2.00 \pm 0.22	2.67 \pm 0.45
			0.004	<0.0001	0.11	0.25
SNP8	CC	60	2.58 \pm 0.14 ^a	2.67 \pm 0.13 ^a	2.33 \pm 0.25	Monomorphic (2.67 \pm 0.23)
	CG	10	2.00 \pm 0.00 ^b	2.00 \pm 0.00 ^b	2.00 \pm 0.00	NM
p value	GG	10	1.50 \pm 0.17 ^b	1.00 \pm 0.00 ^c	2.00 \pm 0.00	NM
			0.002	<0.0001	0.585	
SNP9	AG	10	2.00 \pm 0.00 ^b	2.00 \pm 0.00 ^b	2.00 \pm 0.00	NM
	AA	60	2.58 \pm 0.14 ^a	2.67 \pm 0.13 ^a	2.33 \pm 0.25	2.43 \pm 0.22
p value	GG	10	1.50 \pm 0.17 ^c	1.00 \pm 0.00 ^c	2.00 \pm 0.00	2.00 \pm 0.00
			0.002	<0.0001	0.59	
SNP10	GA	30	3.00 \pm 0.18 ^a	3.00 \pm 0.00 ^a	3.00 \pm 0.00 ^a	3.00 \pm 0.28 ^a
	AA	15	2.00 \pm 0.21 ^b	2.50 \pm 0.17 ^a	1.00 \pm 0.00 ^c	NM
p value	GG	35	2.00 \pm 0.13 ^b	1.50 \pm 0.17 ^b	2.33 \pm 0.13 ^b	2.00 \pm 0.33 ^b
			<0.0001	<0.0001	<0.0001	0.039
SNP11	TC	10	3.00 \pm 0.00 ^a	3.00 \pm 0.00 ^a	3.00 \pm 0.00 ^a	
	CC	35	2.28 \pm 0.22 ^b	2.00 \pm 0.22 ^b	1.67 \pm 0.13 ^b	5.00 \pm 0.00 ^a
p value	TT	35	2.29 \pm 0.20 ^b	2.00 \pm 0.00 ^b	3.00 \pm 0.00 ^a	2.20 \pm 0.15 ^b
			0.106	0.025	<0.0001	<0.0001
SNP12	GA	10	2.00 \pm 0.00 ^b	NM	2.00 \pm 0.00	Monomorphic (2.67 \pm 0.23)
	GG	65	2.54 \pm 0.13 ^a	1.50 \pm 0.17 ^b	NM	NM
p value	AA	5	1.50 \pm 0.17 ^b	2.67 \pm 0.13 ^a	2.25 \pm 0.19	NM
			0.005	<0.0001	0.52	
SNP13	CT	5	1.00 \pm 0.00 ^b	Monomorphic (2.20 \pm 0.15)	1.00 \pm 0.00 ^b	Monomorphic (2.67 \pm 0.23)
	CC	75	2.47 \pm 0.11 ^a	NM	2.50 \pm 0.11 ^a	NM
p value			0.001		<0.0001	
SNP14	TA	10	2.00 \pm 0.00 ^b	Monomorphic (2.20 \pm 0.15)	Monomorphic (2.20 \pm 0.15)	2.0 \pm 0.00 ^b
	TT	70	2.43 \pm 0.13 ^a	NM	NM	3.00 \pm 0.32 ^a
p value			0.206			0.039

Note: Means in the same column and same SNP followed by lower case letters vary significantly (Tukey test, 5%); N= number of sample for overall means; Overall= mean of LS of three goat breeds; The bold marked SNPs were included for further statistical analysis to ensure the association with prolific trait; SE= standard error; NM= Not measured (no sample available during investigation).

Table 8. Linkage Disequilibrium (D'), squared coefficient of correlation (r), and Chi-squared test (χ^2) of paired SNPs

SNP	D'	R	χ^2
SNP1 and SNP7	0.193	0.03	0.610
SNP1 and SNP8	0.233	0.02	0.494
SNP1 and SNP9	0.233	0.02	0.494
SNP1 and SNP10	0.042	0.00	0.009
SNP1 and SNP11	-0.18	0.00	0.068
SNP1 and SNP12	-0.28	0.01	0.204
SNP1 and SNP13	1.000	0.22	4,966*
SNP1 and SNP14	-1.00	0.02	0.461
SNP7 and SNP8	-1.00	0.08	1.840
SNP7 and SNP9	-1.00	0.08	1.840
SNP7 and SNP10	-0.30	0.01	0.290
SNP7 and SNP11	0.042	0.00	0.014
SNP7 and SNP12	-1.00	0.08	1.840
SNP7 and SNP13	-1.00	0.01	0.157
SNP7 and SNP14	-1.00	0.01	0.329
SNP8 and SNP9	1.000	1.00	23.00***
SNP8 and SNP10	1.000	0.58	13.38***
SNP8 and SNP11	-0.59	0.08	1.864
SNP8 and SNP12	0.808	0.65	15.03***
SNP8 and SNP13	-1.00	0.02	0.558
SNP8 and SNP14	-1.00	0.05	1.168
SNP9 and SNP10	1.000	0.58	13.38***
SNP9 and SNP11	-0.59	0.08	1.864
SNP9 and SNP12	0.808	0.65	15.03***
SNP9 and SNP13	-1.00	0.02	0.558
SNP9 and SNP14	-1.00	0.05	1.168
SNP10 and SNP11	0.179	0.02	0.350
SNP10 and SNP12	0.760	0.34	7,738**
SNP10 and SNP13	-1.00	0.04	0.958
SNP10 and SNP14	-1.00	0.09	2.008
SNP11 and SNP12	-0.59	0.08	1.864
SNP11 and SNP13	-1.00	0.02	0.457
SNP11 and SNP14	1.000	0.22	5,007*
SNP12 and SNP13	-1.00	0.02	0.558
SNP12 and SNP14	-1.00	0.05	1.168
SNP13 and SNP14	-1.00	0.00	0.100

Note: D'= linkage disequilibrium coefficient; r= correlation coefficient; χ^2 = chi-square test. * 0.01<p<0.05; ** 0.001<p<0.01; *** p<0.001 significant by the Bonferroni procedure.

breeding selection, such as GDF9, BMP1B, FecB, ESR, and GDF9 genes in Cashmere goats (Yue *et al.*, 2019; Wang *et al.*, 2019), INHA gene in Malabari goats (Pillai & Venkatachalapathy, 2020), DNMT3B gene in Shaanbei White Cashmere goats (Hui *et al.*, 2020), and MTNR1A gene in Slovenian sheep breeds (Starič *et al.*, 2020) and determine significant correlation with higher LS.

The previous study about the polymorphisms of KISS1 gene as a candidate gene for prolific traits has been explored in goats. In Jining Grey goat, there are three mutations in intron 1 (G296C, G454T, and T505A), 18 bp insertion/deletion (indel) variant in intron 1 and no mutation found in exon 2, further two mutations (G3433A and C3688A) were located in exon 3 (Cao *et al.*, 2010). Another study could detect ten polymorphisms in KISS1 gene in three Chinese goat breeds (g. 384G>A,

Table 9. Association of haplotype polymorphisms of KISS1 gene with litter size (p<0.0001)

Haplotype variations	Number	Means \pm SE
H2	CATAGCGCAACGCT	10 4.00 \pm 0.33 ^a
H10	CATTGCGCAGTGCT	4 3.00 \pm 0.22 ^b
H12	CAATCCGCAATGCT	6 3.00 \pm 0.24 ^b
H9	CAATGCGCAACGCT	7 3.00 \pm 0.22 ^b
H6	CATTGCACAACGCT	3 3.00 \pm 0.24 ^b
H14	CCTTCTGCAAGTGCT	5 3.00 \pm 0.22 ^b
H4	TATTGCACAACGCT	5 2.00 \pm 0.20 ^c
H13	CATTCTGCAATGCA	10 2.00 \pm 0.22 ^c
H8	TATAGCGGGGCGCT	8 2.00 \pm 0.31 ^c
H3	TCTTGCAGGGTACT	6 2.00 \pm 0.25 ^c
H1	CATAGCGGGGCACT	10 1.50 \pm 0.17 ^d
H7	TAATGCGCAACGCT	3 1.00 \pm 0.22 ^d
H11	CATTGCACAGTGCT	3 1.00 \pm 0.31 ^d

Note: Means with different superscripts differ significantly (p<0.05); SE= standard error.

Table 10. Transcription factor (TF) binding site prediction of allele A at SNP9 of intron 1 KISS1 gene

TF	P-value	Q-value	Matched sequence
NFIC	4.03E-6	0.008	ACCAGGGCTCAGAGTCAAGT
ESR1	7.70E-8	0.000	TCAGGGTCA

g.1147T>C, g.1417G>A, g.1428_1429delG, g.2124C>T, SNP6, SNP11, SNP12, SNP13, g.3864_3865delCA, and g.3885_3886insACCCC (An *et al.*, 2013). TT genotype at intron 1 had a higher progesterone level in comparison with TA genotype in Damascus and Zarabi goat breed (El-Tarabany *et al.*, 2017). Ferreira *et al.* (2020) argued that the SNPs that affected a production trait could be used as MAS for selection programs in small herds or when genomic selection is not possible or adjustable.

Another study in the coding region on KISS1 gene gave a contradictory result. According to Feng *et al.* (2009), exon 1 of the KISS1 gene had no polymorphisms. Similar to previous research, Mulyono *et al.* (2019) could not discover polymorphisms in exon 1 of Etawah Grade goat. On the contrary, Mekuriaw *et al.* (2017) found a polymorphism in exon 1 and exon 2 KISS1 gene. Hou *et al.* (2011) reported a novel variant (T2643C and 2677AGTTCCCC deletion) in the intron 2 KISS1 gene in Chinese goat breeds. The quantified output indicated that TC genotype was correlated with high LS in Chinese goat breeds. Maitra *et al.* (2014) discovered a SNP at g.2803A>G in Indian goats. Contrary to the previous study, the present research could not find a mutation and an indel mutation at g.2643T>C, g.2677Del_AGTTCCTCCC, and g.2803A>G in Indonesian native goat breeds. This proposes a specific mutation characteristic of KISS1 gene within goat breeds in dis-similar environments related to the goat adaptation.

The mutation and deletion in the intron 1 KISS1 gene could influence the stability of mRNA both directly or indirectly. As a result, they impact protein production (Hou *et al.*, 2011). SNP4 and SNP6 had no valuable effect on the prolific trait. Our result was consistent with the prior study in Chinese goat breeds, presenting that

these loci may not influence prolific traits. Furthermore, SNP11 and SNP12 locus significantly predisposed LS ($p < 0.05$). Similar to this finding, SNP11 and SNP12 significantly influenced LS ($p < 0.05$) in Chinese goat breeds. Three genotypes (TT, TC, and CC) have been identified at SNP11 in Indonesian goats. Contrary to this finding, only two genotypes are found (TT and TC) in Chinese goats. Nevertheless, the superior TC that affected LS was only found in Saanen goats, similar to Indonesian goats (An *et al.*, 2013). The various distributions of genotype diversity are related to the different selection objectives, which resulted in the different breeds (Martínez-Royo *et al.*, 2012).

In the recent research, we identified four novel SNPs of KISS1 gene intron 1 and two of them are in prominent association with reproductive traits in Indonesian native goat breeds. AA genotype at SNP9, GA genotype at SNP10 significantly affected LS in all Indonesian native goat breeds ($p < 0.01$). Meanwhile, the genotypes of SNP7, SNP8, and SNP12 did not have the same correlation with LS in different goat breeds. Interestingly, AG genotype at SNP7, CC genotype at SNP8, and AA genotype at SNP12 impressed higher LS only in KC and KJ breeds. Additionally, CC genotype at SNP8 at SD goats has governed the same LS average as KC (2.67 ± 0.23) and is higher than KJ (2.33 ± 0.25). SNP13 was only found in KJ goats, and CC genotype affected the LS significantly ($p < 0.05$). Conversely, TT genotype in Chinese goat breeds had greater LS than those CC in the fourth parity (An *et al.*, 2013).

Otherwise, in SD goats, GG seems superior to AG at SNP7 and monomorphic at SNP8 and SNP12. However, the average LS (2.67 ± 0.23) is likely as high as two other breeds. TT genotype at SNP14 had a larger LS than TA. The population is not under HWE at g.1960-1977DeITATGAGTAGCCCCCTGC, SNP8, SNP9, SNP11, and SNP12. Furthermore, TT genotype was the most common genotype at 2601st position (0.75). Selection in the screen population for higher LS and milk production has resulted in the present situation. Moreover, these mutations may be in linkage disequilibrium with other causative SNPs both in the same gene or other neighboring gene because the polymorphism is not the direct cause for the phenotypic variation.

Comparing genotype frequencies between three goat breeds shows that SD had obvious differences from KC and KJ. Following Hou *et al.* (2011), Boer goats had marked differently from Saanen and Guanzhong goats based on genotype frequencies in the intron 1 KISS1 gene. Genotypes could define the polymorphisms that were absurdly correlated with goat breeds by statistical discrepancies (χ^2 test).

Goats with ID genotype at g.1960-1977DeITATGAGTAGCCCCCTGC had significantly higher LS than II and DD genotype. Wild-type homozygous genotypes had higher LS ($p < 0.05$) in most SNPs except at SNP10 and SNP11, both in the first and the second parities. This denotes homozygous mutant variants have a negative effect on prolific traits. According to this finding, heterozygous mutations could escalate ovulation rate and LS, whereas, in homozygous circumstances,

the effects may be contradictory, from sterility to hyper-prolificacy (Majd *et al.*, 2019).

The indel diversity was lesser than SNPs (Table 2). This locus can be identified in three Indonesian native goat breeds and exhibited a high varied D allelic frequency (56%–94%). The ID genotype can be judged as predominant genotypes in Indonesian native goat breeds. Similar to this finding, ID genotype of SPEF2 gene and CDC25A gene was encountered to correlate with higher LS than other genotypes (Chen *et al.*, 2019; Yang *et al.*, 2021). Contrary to this result, homozygous genotypes significantly had the highest LS are DD genotype of KISS1 gene in Chinese goat breeds, II genotype of casein alpha S1 gene, and II genotypes of KDM6A gene (Cao *et al.*, 2010; Wang *et al.*, 2018; Hui *et al.*, 2018). The important effect of indel position might be related to the efficiency of transcription factors binding there from altering the certain gene function and affecting firstborn LS (Hui *et al.*, 2020).

The mutations are more in intronic regions than exon regions, confirming the number of SNPs (Evans *et al.*, 2014). It has been recommended that introns might withstand mutational disruption, probably by being mutation buffer, cover the exons and regulators of gene expression, resources of protein diversity, and controlling phenotypic variations (Jo *et al.*, 2015; Wang *et al.*, 2018). An intron is a noncoding sequence that has enhanced the function through evolution to maintain its maintenance (Parenteau *et al.*, 2019). The importance of the SNPs identified in introns regions cannot be rejected as it has been found that mutations may change gene expression by impressing splicing accuracy/efficiency or coding biases (Cartegni *et al.*, 2002).

Intron mutations may influence the mRNA level of genes by turning the methylation of CpG sites and changing binding transcription factors (Van Laere *et al.*, 2003). Intron could result in existing microRNA (miRNA) and non-coding RNA binding sites (Hui *et al.*, 2020) and may alter spatial configuration and position of the chromosome, thereby influencing the binding of augments to transcription factors and promoters (Spielmann *et al.*, 2018). Sequences in the non-coding region can affect the mechanism of mRNA deadenylation and degradation (Xu *et al.*, 1997; Nackley *et al.*, 2006) and consequently influence the amount of protein produced. Thus, intronic mutations should be considered for association with the functional traits (Maitra *et al.*, 2014).

Point mutations at transcription factor binding sites cause changes in transcriptional regulation, resulting in phenotypic variation between breeds and species (Wray *et al.*, 2007). According to statistical analysis (Table 7), the A allele at SNP9 strongly correlates with litter size. Therefore, the polymorphism at SNP9 may affect the binding affinity of TF. The mRNA profiling analysis on wild type animals revealed that NFIC is a more potent gene activator than a repressor, suggesting that NFIC may directly activate gene expression (Pjanic *et al.*, 2011), which indicated the wild type A allele of SNP9 could be a significant genetic regulator of KISS1 gene expression through modulating kisspeptin that can affect GnRH release, and as a result, increasing larger lit-

ter size. In addition, the g.1384G allele of the KISS1 gene may disrupt a GZF1 transcription factor binding site, thus reducing litter size (An *et al.*, 2015^b), and g.2540T had putative binding sites for the androgen receptor, which plays an important role in the signaling pathway involved in ovulation rate increase (Jeet *et al.*, 2022).

HWE is utilized to appraise current populations' equilibrium and genotype frequencies and forecast allele and genotype frequencies in the next generations and earlier generations (Duhovnikoff *et al.*, 2016). The χ^2 values (Table 3) showed that most populations were not under HWE at five loci (g.1960-1977DeTATGAG-TAGCCCCCTGC, SNP8, SNP9, SNP11, and SNP12). KC goats were in agreement with HWE at all loci. KJ goats were not under HWE at SNP8, SNP9, and SNP12, and neither were SD goats at g.1960-1977DeTATGAG-TAGCCCCCTGC, SNP8, SNP9, SNP11, and SNP12 ($\chi^2 > 3.841$). Surprisingly, the disequilibrium sites in SD goats are the same as disequilibrium at the overall sites. A population in the covenant of HWE shows the lack of physical and natural selection, genetic drift, and equal genotypic distribution between generations (El-Komy *et al.*, 2021). Moreover, major artificial selection of goat production traits might lead the population not to be under Hardy Weinberg Equilibrium (Yang *et al.*, 2018; Dong & Du, 2011). The output of selection pressure caused higher dairy quantity and body weight than two other breeds, so SD goats are utilized as a dual-purpose goats. Parallel to this report, the Istrian Pramenka breed in Slovenia resulted from dairy capacity selection pressure (Starič *et al.*, 2020). The selection program in KJ goats revealed a higher average body weight than KC goats (Kurnianto *et al.*, 2013). Table 4 showed that the twin percentage on KJ goats is higher than KJ and SD goats; moreover, the single kid percentage is lower than two other breeds. This situation could be explained by more intensive economic traits selection in KJ and SD goats than KC goats.

Linkage disequilibrium (LD) is a strong method used to calculate correlation in many loci. The present study found a strong LD between SNPs associated with the prolific trait in Indonesian native goat breeds, which were SNP1 and SNP13, SNP8 and SNP9, SNP8 and SNP10, SNP8 and SNP12, SNP9 and SNP10, SNP9 and SNP12, SNP10 and SNP12 also SNP11 and SNP14, whereas SNP1 and SNP9 are novel variants of KISS1 gene. D' data ranged from 0.76 to 1, indicating very high linkage (Table 8). Loci that were linked firmly to profitable mutations can increase quickly in frequency by genetic hitchhiking (Waples *et al.*, 2015) and interpreting their entity and coinheritance effect on the studied phenotypic traits (El-Komy *et al.*, 2021). An intronic variation could be in perfect LD with known phenotype-associated mutations (Nakaoka *et al.*, 2016; Cui *et al.*, 2018). LD leftover even after a few next generations of recombination and genome crosses, the advantages of these markers in large genetic selection of the pattern of segregating family are negligible (de Lima *et al.*, 2020).

The present study analyzed the association of different genotypes and parities (from the first to the third parity). LS tended to incline in the third parities. Although, this trend was not found from the first

parity to the second parity. The LS and puberty are governed by many factors such as nutritional, genetic, environmental, and maternal effects (de Lima *et al.*, 2020). The effect of parity and year of kidding on LS was significant, but it varied depending on the loci combination. CC genotype at SNP13 is a marvelous genotype significantly correlated with larger LS in the first to the third parity ($p < 0.05$). Unfortunately, it is found solely in KJ goat. Maitra *et al.* (2014) also found the disparity in LS and parity found in different genotypes. Starič *et al.* (2020) reported that genotype has different effects on different breeds, similar to the current study. These differences were correlated with genotype or allele frequencies and the correlation between reproductive performance and genotype diversity. This was also confirmed by Jeet *et al.* (2022) that the effect of the genotypes on reproductive functions could be influenced by the objective of the breed, environmental condition and/or the previous selection of the observed animals (Hernandez *et al.*, 2005).

SNP7, SNP11, and SNP12 demonstrated an incline of LS average from the first to the third parities. Although, the superior genotype correlated with higher LS and larger average LS per parity was not the same for those loci. Furthermore, these SNPs were in low LD ($D' = 0.042$, $r = 0.00$). Novel SNP1 and SNP14 significantly associated with LS ($p < 0.05$), regrettably both SNPs were in low LD ($D' = -1.00$, $r = 0.02$). Therefore, these SNPs could not be used as a prominent genetic marker.

On the other hand, SNP8, SNP9, and SNP10 expressed that genotype at these loci influences the LS significantly at the first and the third parities, but not at the second parity. However, GA genotype at SNP10 showed an effect only in the first parity. Moreover, CC genotype at SNP8 and AA genotype at SNP9 showed an association with LS at the third parity, which was significantly higher than LS at the second parity and the first parity. Unfortunately, we were lack of samples at the third parity. Overall, CC genotype at SNP8, AA genotype at SNP9, and GA genotype at SNP10 were excellent genotypes associated with LS and parity significantly ($p < 0.05$) in Indonesian native goat breeds. Additionally, these loci pairs (SNP8 and SNP9; SNP8 and SNP10; SNP9 and SNP10) were in remarkably strong linkage. ($D' = 1$ respectively, $r = 1; 0.58; 0.58$ each, $\chi^2 = 23.000; 13.382; 13.382$). In contrast, the interaction effect between parity and genotype was insignificant on LS in Black Bengal goats (Maitra *et al.*, 2014). Selection for LS within the breed is suggested as a main genetic improvement strategy if only the environmental adaptation had been long-built and remains crucial, or if a 0.1-kid increase in LS is sufficient to increase production (Notter, 2012).

The reproductive traits are complex quantitative traits involving many genes, loci, and interactions. Therefore, it is necessary to analyze multiple genes or loci's combined effect on reproductive traits (An *et al.*, 2015^a).

CONCLUSION

Fifteen variants have been recognized in the present research, of which four are novel SNPs (SNP1, SNP2,

SNP3, and SNP9). SNP9 at intron 1 of KISS1 gene was found to be in strong linkage with SNP8 and SNP10, and identified to have a significant association with LS and parity. Furthermore, the does with H2 haplotype (CCATAGCGCAACGT) had higher LS than those other haplotypes. The NFIC at wild type A allele of SNP9 might act as an activator of gene expression.

CONFLICT OF INTEREST

The authors declare that no financials, personals, or other relationships with other people or organizations related to the materials discussed in the manuscript pose a conflict of interest.

ACKNOWLEDGEMENT

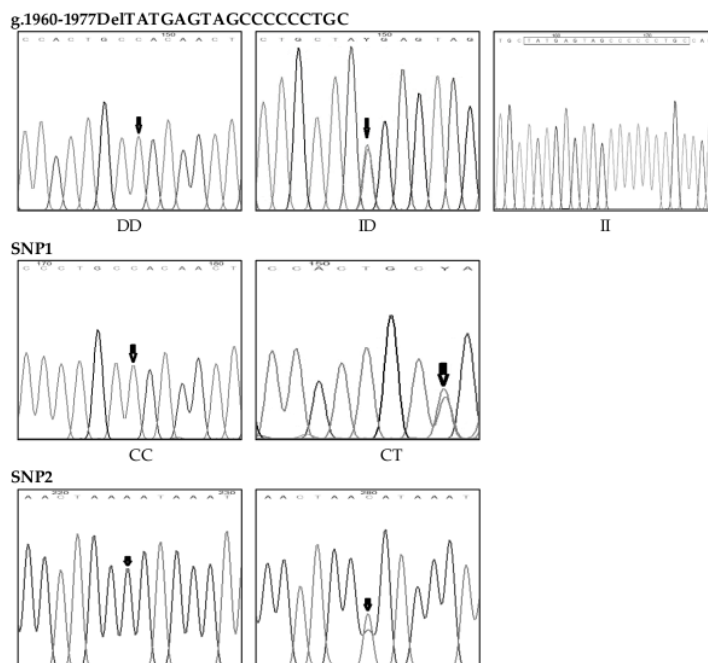
The authors thank Grobogan, Purbalingga, and Lumajang regency farmers for samples collection and Diponegoro Marine Biodiversity laboratory. This research was funded by Directorate General of Strengthening Research and Development, Ministry of Research and Technology/National Agency for Research and Innovation, Republic of Indonesia with contract No. 187-47/UN7.6.1/PP/2021, which was partially supported by Ministry of Agriculture of Indonesia (grant number 596.1/KPTS/KP.320/A/8/2019).

REFERENCES

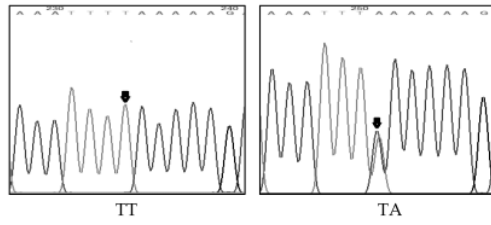
- Abdel-Aziem, S. H., K. F. Mahrous, M. A. M. Abd El-Hafez, & M. Abdel Mordy. 2018. Genetic variability of myostatin and prolactin genes in popular goat breeds in Egypt. *J. Genet. Eng. Biotechnol.* 16:89-97. <https://doi.org/10.1016/j.jgeb.2017.10.005>
- Ahlawat, S., R. Sharma, A. Maitra, & M. S. Tania. 2015. Current status of molecular genetics research of goat fecundity. *Small Rumin. Res.* 125:34-42. <https://doi.org/10.1016/j.smallrumres.2015.01.027>
- An, X., T. Ma, J. Hou, F. Fang, P. Han, Y. Yan, H. Zhao, Y. Song, J. Wang, & B. Cao. 2013. Association analysis between variants in KISS1 gene and litter size in goats. *BMC Genet.* 14:1-6. <https://doi.org/10.1186/1471-2156-14-63>
- An, X. P., J. X. Hou, T. Y. Gao, Y. N. Lei, Y. X. Song, J. G. Wang, & B. Y. Cao. 2015. Association analysis between variants in KITLG gene and litter size in goats. *Gene.* 558:126-130. <https://doi.org/10.1016/j.gene.2014.12.058>
- An, X. P., J. X. Hou, Y. N. Lei, T. Y. Gao, & B. Y. Cao. 2015. Polymorphism and DNA methylation in the promoter modulate KISS1 gene expression and are associated with litter size in goats. *Anim. Reprod. Sci.* 155:36-41. <https://doi.org/10.1016/j.anireprosci.2015.01.013>
- Antonius, A., S. P. Ginting, S. Elieser, A. Tarigan, S. Solehudin, I. G. S. Budisatria, A. P. Z. N. L. Sari, D. N. H. Hariyono, & D. Maharani. 2020. The association of Single Nucleotide Polymorphism (SNP) g.281G > A of CAST Gene with meat quality of Boerka goat. *Iran J. Appl. Anim. Sci.* 10:303-309.
- Cao, G. L., M. X. Chu, L. Fang, R. Di, T. Feng, & N. Li. 2010. Analysis on DNA sequence of KISS-1 gene and its association with litter size in goats. *Mol. Biol. Rep.* 37:3921-3929. <https://doi.org/10.1007/s11033-010-0049-7>
- Cartegni, L., S. L. Chew, & A. R. Krainer. 2002. Listening to silence and understanding nonsense: exonic mutations that affect splicing. *Nat. Rev. Genet.* 3: 285-298. <https://doi.org/10.1038/nrg775>
- Chen, M., H. Yan, K. Wang, Y. Cui, R. Chen, J. W. Liu, Z. Haijing, Q. Lei, & P. Chuanying. 2019. Goat SPEF2: Expression profile, indel variants identification and association analysis with litter size. *Theriogenology* 139:147-155. <https://doi.org/10.1016/j.theriogenology.2019.08.007>
- Ciptadi, G., M. N. Ihsan, A. Budiarto, M. Mudawamah, A. I. Putri, & M. N. A. Naufal. 2019. Reproductive characters of Senduro goat at Lumajang district East Java. *J. Phys. Conf. Ser.* 1146:012033. <https://doi.org/10.1088/1742-6596/1146/1/012033>
- Cui, Y., H. Yan, K. Wang, H. Xu, X. Zhang, H. Zhu, J. Liu, L. Qu, X. Lan, & C. Pan. 2018. Insertion/deletion within the KDM6A gene is significantly associated with litter size in goat. *Front. Genet.* 9:1-23. <https://doi.org/10.3389/fgene.2018.00091>
- de Lima, L. G., N. O. B. de Souza, R. R. Rios, B. A. de Melo, L. T. A. dos Santos, K. de Moraes Silva, T. W. Murphy, & A. B. Fraga. 2020. Advances in molecular genetic techniques applied to selection for litter size in goats (*Capra hircus*): A review. *J. Appl. Anim. Res.* 48:38-44. <https://doi.org/10.1080/009712119.2020.1717497>
- Dong, C. H. & L. X. Du. 2011. Research on polymorphism analysis of GDF9 gene related to reproductive traits of goat. *Journal of Shandong Agricultural University* 42:227-237.
- Douhovnikoff, V. & M. Leventhal. 2016. The use of Hardy-Weinberg Equilibrium in clonal plant systems. *BMC Ecol. Evol.* 6:1173-1180. <https://doi.org/10.1002/ece3.1946>
- El-Komy, S. M., A. A. Saleh, R. M. Abd El-Aziz, & M. A. El-Magd. 2021. Association of GH polymorphisms with growth traits in buffaloes. *Domest. Anim. Endocrinol.* 74:1-13. <https://doi.org/10.1016/j.domaniend.2020.106541>
- El-Tarabany, M. S., A. W. Zagloola, A. A. El-Tarabany, & A. Awad. 2017. Association analysis of polymorphism in KISS1 gene with reproductive traits in goats. *Anim. Reprod. Sci.* 180:92-99. <https://doi.org/10.1016/j.anireprosci.2017.03.006>
- Evans, J., J. Kim, K. L. Childs, B. Vaillancourt, E. Crisovan, A. Nandety, D. J. Gerhardt, T. A. Richmond, J. A. Jeddeloh, S. M. Kaeppler, M. D. Casler, & C. R. Buell. 2014. Nucleotide polymorphism and copy number variant detection using exome capture and next generation sequencing in the polyploid grass *Panicum virgatum*. *Plant Journal* 79:993-1008. <https://doi.org/10.1111/tpj.12601>
- Excoffier, L. & H. E. L. Lischer. 2010. Arlequin suite ver 3.5: a new series of programs to perform population genetics analyses under Linux and Windows. *Mol. Ecol. Resour.* 10: 564-567. <https://doi.org/10.1111/j.1755-0998.2010.02847.x>
- FAOSTAT. 2019. Retrieved from: <http://www.fao.org/faostat/en/#data/QL>.
- Feng, T., Y. Z. Zhao, M. X. Chu, Y. J. Zhang, L. Fang, R. Di, G. L. Cao, & N. Li. 2009. Association between sexual precocity and alleles of KISS-1 and GPR54 genes in goats. *Anim. Biotechnol.* 20:172-176. <https://doi.org/10.1080/10495390903004493>
- Ferreira, L., M. A. M. Soares, M. T. Rodrigues, J. L. S. Araujo, A. L. P. de Melo, E. Gasparino, & O. S. R. Garcia. 2020. UCP2 and PPARG gene polymorphisms and their association with milk yield and composition traits in goats. *Small Rumin. Res.* 192:106210. <https://doi.org/10.1016/j.smallrumres.2020.106210>
- Fu, G., G. Saunders, & J. Stevens. 2014. Holm multiple correction for large-scale geneshape association mapping. *BMC Genet.* 15:1-8. <http://www.biomedcentral.com/1471-2156/15/S1/S5>
- Gama, L. T. & M. C. Bressana. 2011. Biotechnology applications for the sustainable management of goat genetic resources. *Small Rumin. Res.* 98:133-146. <https://doi.org/10.1016/j.smallrumres.2011.03.031>
- Hardyta, G., D. T. Widayati, & D. Maharani. 2020. Association of SNP T125A on KISS1 gene with reproduction hormone levels in Kaligesing goat. *J. Indones. Trop. Anim. Agric.* 45:253-260. <https://doi.org/10.14710/jitaa.45.4.253-260>

- Hernandez, X., L. Bodin, D. Chesneau, D. Guillaumea, P. Chemineau, B. Malpau, & M. Migaud. 2005. Relationship between MT1 melatonin receptor gene polymorphism and seasonal physiological responses in Ile-de-France ewes. *Reprod. Nutr. Dev.* 45:151-162. <https://doi.org/10.1051/rnd.2005012>
- Hou, J. X., X. P. An, J. G. Wang, Y. X. Song, Y. H. Cui, Y. F. Wang, Q. J. Chen, & B. Y. Cao. 2011. New genetic polymorphisms of KISS-1 gene and their association with litter size in goats. *Small Rumin. Res.* 96:106-110. <https://doi.org/10.1016/j.smallrumres.2010.11.013>
- Hu, H., Y. Miao, L. Jia, Q. Yu, Q. Zhang, & A. Guo. 2018. Animal TFDB 3.0: a comprehensive resource for annotation and prediction of animal transcription factors. *Nucl. Acids Res.* 47:D33-D38. <https://doi.org/10.1093/nar/gky822>
- Hui, Y., Y. Zhang, K. Wang, C. Pan, H. Chen, L. Qu, X. Song, & X. Lan. 2020. Goat DNMT3B: An indel mutation detection, association analysis with litter size and mRNA expression in gonads. *Theriogenology*. 147:108-115. <https://doi.org/10.1016/j.theriogenology.2020.02.025>
- Jeet, V., A. Magotraa, Y. C. Banga, S. Kumar, A. R. Garga, A. S. Yadava, & P. Bahurupi. 2022. Evaluation of candidate point mutation of Kisspeptin 1 gene associated with litter size in Indian Goat breeds and its effect on transcription factor binding sites. *Domest. Anim. Endocrinol.* 78:106676. <https://doi.org/10.1016/j.domaniend.2021.106676>
- Jo, B. S. & S. S. Choi. 2015. Introns: the functional benefits of introns in genomes. *Genomics Inform.* 13:12-118. <https://doi.org/10.5808/GI.2015.13.4.112>
- Kaumbata, W., L. Banda, G. Mészáros, T. Gondwea, M. J. Woodward-Greenec, B. D. Rosen, C. P. Van Tassell, J. Sölkner, & M. Wurzing. 2020. Tangible and intangible benefits of local goats rearing in smallholder farms in Malawi. *Small Rumin. Res.* 187:1-8. <https://doi.org/10.1016/j.smallrumres.2020.106095>
- Kumar, S., G. Stecher, M. Li, C. Knyaz, & K. Tamura. 2018. MEGA X: Molecular Evolutionary Genetics Analysis across computing platforms. *Mol. Biol. Evol.* 35:1547-1549. <https://doi.org/10.1093/molbev/msy096>
- Kurnianto, E., S. Sutopo, E. Purbowati, E. T. Setiatin, D. Samsudewa, & T. Permatasari. 2013. Multivariate analysis of morphological traits of local goats in Central Java, Indonesia. *Iranian J. Appl. Anim. Sci.* 3:361-367.
- Lestari, D. A., E. Purbowati, S. Sutopo, & E. Kurnianto. 2018. Phylogenetical relationships between Kejobong goat and other goats based on Mt-DNA D-loop sequence analysis. *Trop. Anim. Sci. J.* 41:85-93. <https://doi.org/10.5398/tasj.2018.41.2.85>
- Liu, G., Q. Zhao, J. Lu, F. Sun, X. Han, J. Zhao, H. Feng, K. Wang, & C. Liu. 2019. Insights into the genetic diversity of indigenous goats and their conservation priorities. *Asian-Australas. J. Anim. Sci.* 32:1501-1510. <https://doi.org/10.5713/ajas.18.0737>
- Maitra, A., R. Sharma, S. Ahlawat, M. S. Tania, M. Roy, & V. Prakas. 2014. Association analysis of polymorphisms in caprine KISS1 gene with reproductive traits. *Anim. Reprod. Sci.* 151:71-77. <https://doi.org/10.1016/j.anireprosci.2014.09.013>
- Majd, S. A., A. Ahmad, R. Talebi, P. M. Koohi, S. Fabre, & S. Qanbari. 2019. Polymorphism identification in ovine KISS1R/GPR54 gene among pure and crossbreeds of Iranian sheep. *Small Rumin. Res.* 173:23-29. <https://doi.org/10.1016/j.smallrumres.2019.02.005>
- Martínez-Royo, A., B. Lahoz, J. L. Alabar, J. Folch, & J. H. Calvo. 2012. Characterisation of the melatonin receptor 1A (MTNR1A) gene in the rasa aragonesa sheep breed: Association with reproductive seasonality. *Anim. Reprod. Sci.* 133:169-175. <https://doi.org/10.1016/j.anireprosci.2012.06.018>
- Mekuriaw, G., J. M. Mwacharo, T. Dessie, O. Mwai, A. Djikeng, S. Osama, G. Gebreyesus, A. Kidane, S. Abega, & K. Tesfaye. 2017. Polymorphism analysis of kisspeptin (KISS1) gene and its association with litter size in Ethiopian indigenous goat populations. *Afr. J. Biotechnol.* 16:1254-1264.
- Miller, B. A., J. Dubeuf, J. Luginbuhl, & J. Capote. 2012. Scaling up goat based interventions to benefit the poor. Retrieved from: http://www.igagoatworld.com/uploads/6/1/6/2/6162024/scaling_up_goat_based_interventions.pdf.
- Ministry of Agriculture. 2020. The Statistic Book on Livestock and Animal Health Services. Directorate General of Livestock and Animal Health Services. Jakarta.
- Mulyono, R. H., C. Sumantri, R. R. Noor, J. Jakaria, & D. A. Astuti. 2019. Analysis of the linkage of BMP15, BMP1B and KISS1 genes with fecundity traits in female etawah crossbreed goats. *Jurnal Ilmu Pertanian Indonesia* 24:83-92. <https://doi.org/10.18343/jipi.24.2.83>
- Nackley, A. G., S. A. Shabalina, I. E. Tchivileva, & K. Satterfield. 2006. Human catechol-O-methyltransferase haplotypes modulate protein expression by altering mRNA secondary structure. *Science*. 314:1930-1933. <https://doi.org/10.1126/science.1131262>
- Nakaoka, H., A. Gurumurthy, T. Hayano, S. Ahmadloo, W. H. Omer, K. Yoshihara, A. Yamamoto, K. Kurose, T. Enomoto, S. Akira, K. Hosomichi, & I. Inoue. 2016. Allelic imbalance in regulation of ANRIL through chromatin interaction at 9p21 endometriosis risk locus. *PLoS Genet.* 12:1-23. <https://doi.org/10.1371/journal.pgen.1005893>
- Nei, M. & S. Kumar. 2000. Molecular Evaluation and Phylogenetics. Oxford University Press, New York.
- Notter, D. R. 2012. Genetic improvement of reproductive efficiency of sheep and goats. *Anim. Reprod. Sci.* 130:147-151. <https://doi.org/10.1016/j.anireprosci.2012.01.008>
- Parenteau, J. & S. A. Elela. 2019. Introns: good day junk is bad day treasure. *Trends Genet.* 35:923-934. <https://doi.org/10.1016/j.tig.2019.09.010>
- Periasamy, K., S. M. F. Vahidi, P. Silva, M. O. Faruque, A. N. Naqvi, M. Basar, J. Cao, S. H. Zhao, L. T. Thuy, R. Pichler, M. G. Podesta, M. Shamsuddin, P. Boettcher, J. F. Garcia, J. L. Han, P. A. Marsan, A. Diallo, & G. J. Viljoen. 2017. Mapping molecular diversity of indigenous goat genetic resources of Asia. *Small Rumin. Res.* 148:2-10. <https://doi.org/10.1016/j.smallrumres.2016.12.035>
- Pillai, H. B. & R. T. Venkatachalapathy. 2020. Association of inhibin alpha gene polymorphism with litter size and growth in Malabari goats of India. *Small Rumin. Res.* 192:1-8. <https://doi.org/10.1016/j.smallrumres.2020.106188>
- Pinilla, L., E. Aguilar, C. Diegue, R. P. Millar, & M. Tena-Sempere. 2012. Kisspeptins and reproduction: physiological roles and regulatory mechanisms. *Physiol. Rev.* 92:1235-1316. <https://doi.org/10.1152/physrev.00037.2010>
- Pjanic, M., P. Pjanic, C. Schmid, G. Ambrosini, A. Gaussin, G. Plasari, C. Mazza, P. Bucher, & N. Mermod. 2011. Nuclear factor I revealed as family of promoter binding transcription activators. *BMC Genomics* 12:181. <https://doi.org/10.1186/1471-2164-12-181>
- Rahmatalla, S. A., D. Arends, A. S. Ahmed, M. Reissmann, & G. A. Brockmann. 2020. Whey protein polymorphisms in Sudanese goat breeds. *Trop. Anim. Health Prod.* 52:1211-1222. <https://doi.org/10.1007/s11250-019-02119-2>
- Rossi, U. A., F. C. Hasenauer, M. E. Caffaro, R. Neumann, A. Salatin, M. A. Poli, & C. A. Rossetti. 2017. A haplotype at intron 8 of PTPRT gene is associated with resistance to Brucella infection in Argentinian creole goats. *Vet. Microbiol.* 207:133-137. <https://doi.org/10.1016/j.vetmic.2017.06.001>
- Rozas, J., A. Ferrer-Mata, J. C. Sánchez-DelBarrio, S.

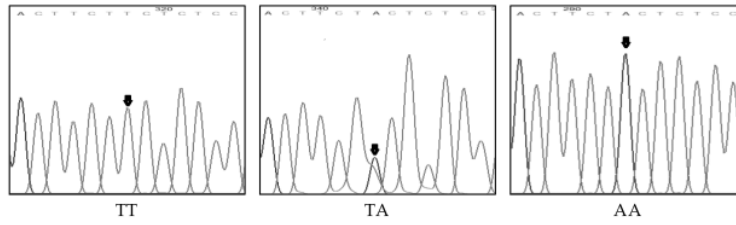
- Guirao-Rico, P. Librado, S. E. Ramos-Onsins, & A. Sánchez-Gracia. 2017. DnaSP 6: DNA sequence polymorphism analysis of large data sets. *Mol. Biol. Evol.* 34:3299-3302. <https://doi.org/10.1093/molbev/msx248>
- Rupp, R., S. Mucha, H. Larroque, J. McEwan, & J. Conington. 2016. Genomic application in sheep and goat breeding. *Anim. Front.* 61:39-44. <https://hal.inrae.fr/hal-02637118> <https://doi.org/10.2527/af.2016-0006>
- SAS® University Edition. Software 3.8, 2018. SAS Institute Inc.
- Sasi, R., R. Kanakkaparambil, & A. Thazhathuveetil. 2020. Polymorphism of fecundity genes, BMP1B, BMP15 and GDF9, in tropical goat breeds of Kerala. *Gene Rep.* 21:100944. <https://doi.org/10.1016/j.genrep.2020.100944>
- Spielmann, M., L. Dariog, & M. Stefan. 2018. Structural variation in the 3D genome. *Nat. Rev. Genet.* 19:453-467. <https://doi.org/10.1038/s41576-018-0007-0>
- Starič, J., F. Farci, S. Luridiana, M. C. Mura, L. Pulinas, G. Cosso, & V. Carcangiu. 2020. Reproductive performance in three Slovenian sheep breeds with different alleles for the MTNR1A gene. *Anim. Reprod. Sci.* 216:106352. <https://doi.org/10.1016/j.anireprosci.2020.106352>
- Swain, L. L., C. Mishra, S. S. Sahoo, G. Nayak, S. K. Pradhan, S. R. Mishra, & M. Dige. 2020. An in vivo and in silico analysis of novel variation in TMBIM6 gene affecting cardiopulmonary traits of Indian goats. *J. Therm. Biol.* 88:1-11. <https://doi.org/10.1016/j.jtherbio.2019.102491>
- Tsukahara, Y., Y. Chomei, K. Oishi, A. K. Kahi, J. M. Panandam, T. K. Mukherjee, & H. Hirooka. 2008. Analysis of growth patterns in purebred Kambing Katjang goat and its crosses with the German Fawn. *Small Rumin. Res.* 80:8-15. <https://doi.org/10.1016/j.smallrumres.2008.07.030>
- Van Laere, A. S., M. Nguyen, M. Braunschweig, C. Nezer, C. Collette, L. Moreau, A. L. Archibald, C. S. Haley, N. Buys, M. Tally, G. Andersson, M. Georges, & L. Andersson. 2003. A regulatory mutation in IGF2 causes a major QTL effect on muscle growth in the pig. *Nature* 425:832-836. <https://doi.org/10.1038/nature02064>
- Wang, K., Y. Hailong, H. Xua, Q. Yang, S. Zhang, C. Pan, H. Chen, H. Zhu, J. Liu, L. Qu, & X. Lan. 2018. A novel indel within goat casein alpha S1 gene is significantly associated with litter size. *Gene.* 671:161-169. <https://doi.org/10.1016/j.gene.2018.05.119>
- Wang, X., Q. Yang, K. Wang, H. Yan, C. Pan, H. Chen, J. Liu, H. Zhu, L. Qu, & X. Lan. 2019. Two strongly linked single nucleotide polymorphisms (Q320P and V397I) in GDF9 gene are associated with litter size in cashmere goats. *Theriogenology.* 125:115-121. <https://doi.org/10.1016/j.theriogenology.2018.10.013>
- Waples, R. S. 2015. Testing for hardy-weinberg proportions: Have we lost the plot? *J. Hered.* 106:1-19. <https://doi.org/10.1093/jhered/esu062>
- Wray, G. A. 2007. The evolutionary significance of cis-regulatory mutations. *Nat. Rev. Genet.* 8:206-16. <https://doi.org/10.1038/nrg2063>
- Xu, N., C. Y. Chen, & A. B. Shyu. 1997. Modulation of the fate of cytoplasmic mRNA by AU-rich elements: key sequence features controlling mRNA deadenylation and decay. *Mol. Cell. Biol.* 17:4611-4621. <https://doi.org/10.1128/MCB.17.8.4611>
- Yang, Q., S. L. Zhang, J. Li, X. Y. Wang, K. Peng, X. Y. Lan, & C. Pan. 2018. Development of a touch-down multiplex PCR method for simultaneously rapidly detecting three novel insertion/deletions (indels) within one gene: an example for goat GHR gene. *Anim. Biotechnol.* 30:366-371. <https://doi.org/10.1080/10495398.2018.1517770>
- Yang, Y., X. Sun, W. Cui, N. Liu, K. Wang, L. Qu, & C. Pan. 2021. The detection of mutation within goat cell division cycle 25 A and its effect on kidding number. *Anim. Biotechnol.* <https://doi.org/10.1080/10495398.2021.1910519>
- Yue, C., W. L. Bai, Y. Y. Zheng, T. Y. Hui, J. M. Sun, D. Guo, S. L. Guo, & Z. Y. Wang. 2019. Correlation analysis of candidate gene SNP for high-yield in Liaoning cashmere goats with litter size and cashmere performance. *Anim. Biotechnol.* 30:1-7. <https://doi.org/10.1080/10495398.2019.1652188>



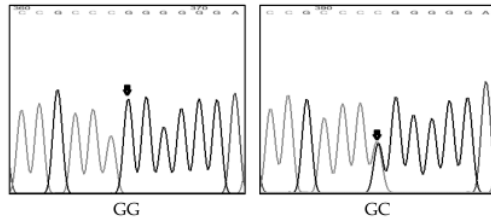
SNP3



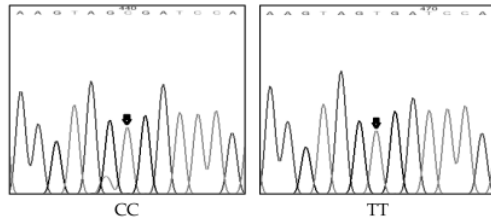
SNP4



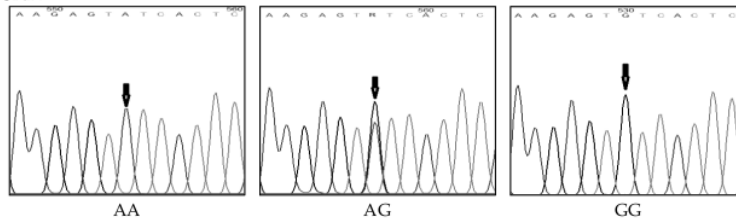
SNP5



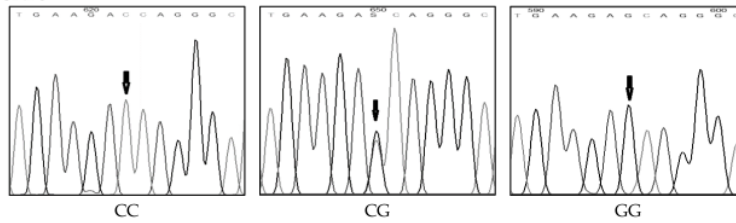
SNP6



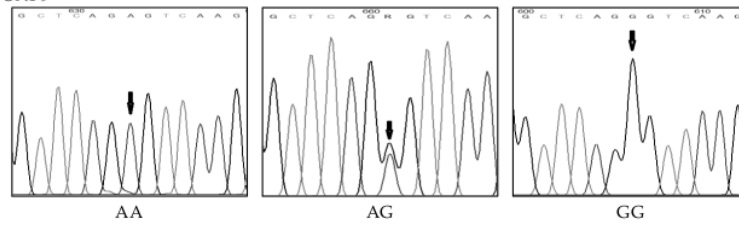
SNP7



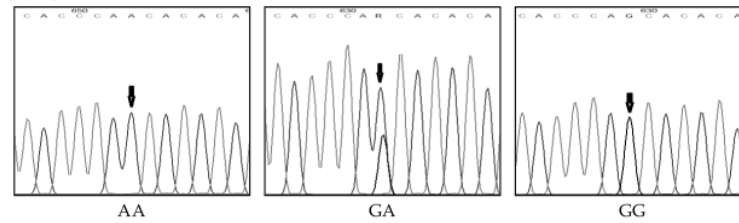
SNP8



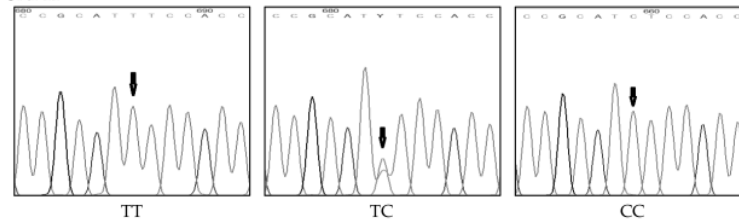
SNP9



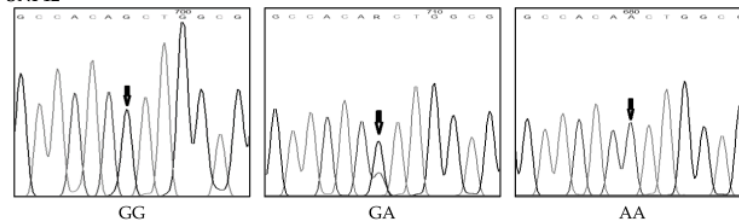
SNP10



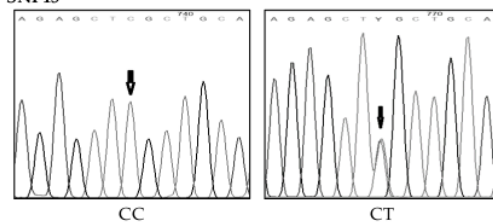
SNP11



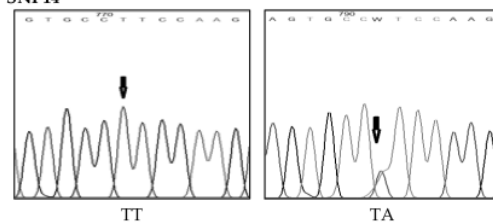
SNP12



SNP13



SNP14



Appendix: Partial sequencing of different genotypes in KISS1 gene of Indonesian native goat breeds

A Novel SNPs of KISS1 Gene Strongly Associated with Litter Size in Indonesian Goat Breeds

ORIGINALITY REPORT

6%

SIMILARITY INDEX

6%

INTERNET SOURCES

3%

PUBLICATIONS

1%

STUDENT PAPERS

PRIMARY SOURCES

1

journal.ipb.ac.id

Internet Source

4%

2

Vikram Jeet, Ankit Magotra, Y.C. Bangar, S. Kumar, A.R. Garg, A.S. Yadav, P. Bahurupi.

"Evaluation of candidate point mutation of Kisspeptin 1 gene associated with litter size in Indian Goat breeds and its effect on transcription factor binding sites", Domestic Animal Endocrinology, 2022

Publication

1%

3

Submitted to Universitas Andalas

Student Paper

1%

4

Yiqing Hui, Yanghai Zhang, Ke Wang, Chuanying Pan, Hong Chen, Lei Qu, Xiaoyue Song, Xianyong Lan. "Goat DNMT3B: an indel mutation detection, association analysis with litter size and mRNA expression in gonads", Theriogenology, 2020

Publication

1%

Exclude quotes On

Exclude matches < 1%

Exclude bibliography On