

# The complete mitochondrial DNA of the tropical oyster *Crassostrea belcheri* from the Cân Giò mangrove in Vietnam

*by Ita W*

---

**Submission date:** 01-Aug-2022 01:38AM (UTC+0700)

**Submission ID:** 1877259483

**File name:** ter\_Crassostrea\_belcheri\_from\_the\_C\_n\_Gi\_mangrove\_in\_Vietnam.pdf (878.69K)

**Word count:** 1519

**Character count:** 8669

**The complete mitochondrial DNA of the tropical oyster  
Crassostrea belcheri from the Càn Giò' mangrove in  
Vietnam**

Romain Gastineau, Đức-Hùng Nguyễn, Claude Lemieux, Monique Turmel,  
Réjean Tremblay, Văn Duy Nguyễn, Ita Widowati, Andrzej Witkowski,  
Jean-Luc Mouget

► **To cite this version:**

Romain Gastineau, Đức-Hùng Nguyễn, Claude Lemieux, Monique Turmel, Réjean Tremblay, et al..  
The complete mitochondrial DNA of the tropical oyster *Crassostrea belcheri* from the Càn Giò' man-  
grove in Vietnam. *Mitochondrial DNA Part B Resources*, Taylor & Francis Online, 2018, 3 (1),  
pp.462-463. 10.1080/23802359.2018.1462126 . hal-02101149

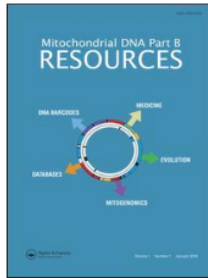
**HAL Id: hal-02101149**

**<https://hal.archives-ouvertes.fr/hal-02101149>**

Submitted on 9 May 2019

**HAL** is a multi-disciplinary open access archive for the deposit and dissemination of scientific research documents, whether they are published or not. The documents may come from teaching and research institutions in France or abroad, or from public or private research centers.

L'archive ouverte pluridisciplinaire **HAL**, est destinée au dépôt et à la diffusion de documents scientifiques de niveau recherche, publiés ou non, émanant des établissements d'enseignement et de recherche français ou étrangers, des laboratoires publics ou privés.



## The complete mitochondrial DNA of the tropical oyster *Crassostrea belcheri* from the C n Gi  mangrove in Vietnam

Romain Gastineau, Đ c-H ng Nguy n, Claude Lemieux, Monique Turmel, R jean Tremblay, V n Duy Nguy n, Ita Widowati, Andrzej Witkowski & Jean-Luc Mouget

To cite this article: Romain Gastineau, Đ c-H ng Nguy n, Claude Lemieux, Monique Turmel, R jean Tremblay, V n Duy Nguy n, Ita Widowati, Andrzej Witkowski & Jean-Luc Mouget (2018) The complete mitochondrial DNA of the tropical oyster *Crassostrea belcheri* from the C n Gi  mangrove in Vietnam, *Mitochondrial DNA Part B*, 3:1, 462-463, DOI: [10.1080/23802359.2018.1462126](https://doi.org/10.1080/23802359.2018.1462126)

To link to this article: <https://doi.org/10.1080/23802359.2018.1462126>



  2018 The Author(s). Published by Informa UK Limited, trading as Taylor & Francis Group.



Published online: 12 Apr 2018.



Submit your article to this journal [↗](#)



Article views: 246



View Crossmark data [↗](#)

## The complete mitochondrial DNA of the tropical oyster *Crassostrea belcheri* from the Càn Giò' mangrove in Vietnam

Romain Gastineau<sup>a</sup>, Đúc-Hùng Nguyễn<sup>b</sup>, Claude Lemieux<sup>c</sup>, Monique Turmel<sup>c</sup>, Réjean Tremblay<sup>d</sup>, Văn Duy Nguyễn<sup>b</sup>, Ita Widowati<sup>e</sup>, Andrzej Witkowski<sup>a</sup> and Jean-Luc Mouget<sup>f</sup>

<sup>a</sup>Natural Sciences Research and Educational Center and Palaeoceanology Unit, Faculty of Geosciences, University of Szczecin, Szczecin, Poland; <sup>b</sup>Faculty of Natural Sciences Pedagogy, Saigon University, Ho Chi Minh City, Vietnam; <sup>c</sup>Département de biochimie, de microbiologie et de bio-informatique, Institut de Biologie Intégrative et des Systèmes, Université Laval, Québec, Canada; <sup>d</sup>ISMER, Université du Québec à Rimouski, Rimouski, Canada; <sup>e</sup>Faculty of Fisheries and Marine Sciences, Diponegoro University, Semarang, Indonesia; <sup>f</sup>Mer-Molécules-Santé (MMS), FR CNRS 3473 IUML, Le Mans Université, Le Mans, France

### ABSTRACT

The complete mitochondrial genome of the oyster *Crassostrea belcheri* from the Càn Giò' mangrove in Vietnam has been sequenced. It consists of a circular DNA molecule of 21020 base pairs (bp), coding for 12 proteins, 20 transfer RNAs, and two ribosomal RNAs. Like the mitogenomes of *Crassostrea iredalei* and *Crassostrea* sp. DB1, it contains a non-coding region and two ORFs. The *C. belcheri* mitogenome provides information that could improve the molecular phylogeny of Asian oysters and be useful to the development of oyster aquaculture in South East Asia.

### ARTICLE HISTORY

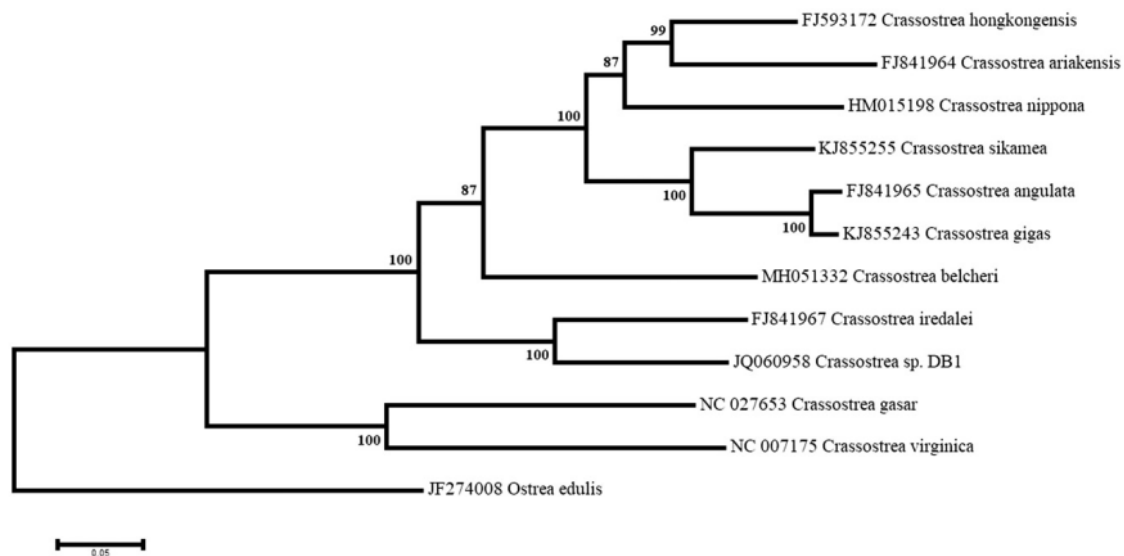
Received 21 March 2018  
Accepted 3 April 2018

### KEYWORDS



*Crassostrea belcheri*;  
mitogenome; Vietnam;  
mangrove; oyster

The tropical oyster *Crassostrea belcheri* is cultured commercially in South-East Asia (Tan and Wong 1996; Klinbuga et al. 2000, 2003, 2005) and Indonesian archipelago (Yoo and Ryu 1984). Its commercialization is an important activity in the

Càn Giò' mangrove, located near Hồ Chí Minh City in Vietnam, where it is sold under the vernacular name of Hàu Dép. In this study, we present the complete mitogenome of *C. belcheri*. The specimen was collected in the mangrove in



**Figure 1.** Maximum likelihood phylogeny using the complete mitogenomes of *Crassostrea belcheri* and other species of oysters, with *Ostrea edulis* as an outgroup. The tree with the highest log likelihood (−161490.9077) is shown. Numbers next to nodes are support values obtained after 1000 bootstrap replicates.

**CONTACT** Romain Gastineau  [gastineauromain@yahoo.fr](mailto:gastineauromain@yahoo.fr)  Natural Sciences Research and Educational Center and Palaeoceanology Unit, Faculty of Geosciences, University of Szczecin, Szczecin, Poland

© 2018 The Author(s). Published by Informa UK Limited, trading as Taylor & Francis Group.

This is an Open Access article distributed under the terms of the Creative Commons Attribution License (<http://creativecommons.org/licenses/by/4.0/>), which permits unrestricted use, distribution, and reproduction in any medium, provided the original work is properly cited.

September 2017, in the Lò Vôi river (10°25'55"N; 106°54'530"E), the remaining flesh and shells being conserved at Saigon University. DNA was extracted following a chloroform-isopropanol protocol, and sequencing was provided by the Beijing Genomic Institute, consisting of 4 Gb of 150-bp paired-end reads from fragments of 300 bp, obtained on an Illumina HiSeq 4000. Data were assembled using Ray 2.3.1 (Boisvert et al. 2010) with a k-mer of 31.

The *C. belcheri* mitogenome is 21020 bp long (GenBank accession no. MH051332), making it the third longest mitogenome sequenced among the genus *Crassostrea* (Wu et al. 2010, 2012). The nucleotide composition of this mitogenome is A 28.3%, C 14.3%, G 21.4%, T 36%. It encodes 12 proteins, 20 transfer RNAs, and two ribosomal RNAs. The *rrnL* gene is split into two parts and the *rrnS* gene is duplicated, both features being commonly found among Asian oysters (Wu et al. 2010). As in other *Crassostrea* mitogenomes, there is a major non-coding region whose size is 797 bp in *C. belcheri*. Also, the *C. belcheri* mitogenome shares with *Crassostrea iredalei* (FJ841967) and *Crassostrea* sp. DB1 (JQ060958) two ORFs originating from the duplication of the *NAD2* gene. The latter ORFs are separated from one another by a putative suppressor tRNA gene.

A maximum-likelihood phylogenetic analysis was performed using the complete mitogenome sequences of 11 *Crassostrea* species and the resulting tree was rooted using the mitogenome of *Ostrea edulis* (Figure 1). *C. belcheri* was recovered between a strongly supported cluster containing *C. hongkongensis*, *C. ariakensis*, *C. nippona*, *C. sikamea*, *C. angulata*, and *C. gigas*, which all have mitogenomes very similar in size and nucleotide composition, and a second robust cluster containing *C. iredalei* and *Crassostrea* sp. DB1, which feature the longest mitogenomes and the two conserved ORFs. The highly supported clade formed by all nine *Crassostrea* species was sister to that containing *C. virginica* and *C. gasar*, both from the American continent.

The *C. belcheri* mitogenome thus provides new information regarding the phylogeny and genome evolution of Asian *Crassostrea* species. It may also serve as a reliable reference sequence for accurate molecular barcoding of the different populations of *C. belcheri* and identification of specimens,

a tool that may be helpful for the development of the aquaculture of this species in South East Asia.

## Disclosure statement

The authors report no conflict of interest. The authors alone are responsible for the content and writing of this article.

## Funding

This publication benefited from funding from the European Commission under the Horizon 2020 Research and Innovation Programme GHANA (The Genus *Haslea*, New marine resources for blue biotechnology and Aquaculture, grant agreement No [734708/GHANA/H2020-MSCA-RISE-2016]), and the International research collaboration-scientific publication (Indonesia – France) Sustainable valorization of Indonesian phytoplankton in aquaculture: new approaches to control infectious disease (SALINA, 2015-2018).

## References

- Boisvert S, Laviolette F, Corbeil J. 2010. Ray: simultaneous assembly of reads from a mix of high-throughput sequencing technologies. *J Comput Biol.* 17:1519–1533.
- Klinbuga S, Ampayup P, Tassanakajon A, Jarayabhand P, Yoosukh W. 2000. Development of species-specific markers of the tropical oyster (*Crassostrea belcheri*) in Thailand. *Mar Biotechnol.* 2:476–484.
- Klinbuga S, Khamnantong N, Puanglarp N, Jarayabhand P, Yoosukh W, Menasveta P. 2005. Molecular Taxonomy of Cupped Oysters (*Crassostrea*, *Saccostrea*, and *Striostrea*) in Thailand Based on COI, 16S, and 18S rDNA Polymorphism. *Mar Biotechnol.* 7:306–317.
- Klinbuga S, Khamnantong N, Tassanakajon A, Puanglarp N, Jarayabhand P, Yoosukh W. 2003. Molecular Genetic Identification Tools for Three Commercially Cultured Oysters (*Crassostrea belcheri*, *Crassostrea iredalei*, and *Saccostrea cucullata*) in Thailand. *Mar Biotechnol.* 5:27–36.
- Tan SH, Wong TM. 1996. Effect of salinity on hatching, larval growth, survival and settling in the tropical oyster *Crassostrea belcheri* (Sowerby). *Aquaculture.* 145:129–139.
- Wu X, Li X, Li L, Xu X, Xia X, Yu Z. 2012. New features of Asian *Crassostrea* oyster mitochondrial genomes: a novel alloacceptor tRNA gene recruitment and two novel ORFs. *Gene.* 507:112–118.
- Wu X, Xu X, Yu Z, Wei Z, Xia J. 2010. Comparison of seven *Crassostrea* mitogenomes and phylogenetic analyses. *Mol Phylogenet Evol.* 57:448–454.
- Yoo SK, Ryu HY. 1984. Comparative morphological characteristics of mangrove oysters. *Bull Korean Fish Soc.* 17:321–326.

# The complete mitochondrial DNA of the tropical oyster *Crassostrea belcheri* from the C n Gi  mangrove in Vietnam

---

## ORIGINALITY REPORT

---

7%

SIMILARITY INDEX

%

INTERNET SOURCES

7%

PUBLICATIONS

%

STUDENT PAPERS

---

## PRIMARY SOURCES

---

- 1** Fiddy S. Prasetya, Martin Foret, Jean-S bastien Desch nes, Romain Gastineau, Jean-Luc Mouget, R jean Tremblay. "Semi-continuous system for benthic diatom cultivation and marennine production", *Algal Research*, 2022 2%

Publication
  - 2** Shu Xiao, Xiangyun Wu, Lu Li, Ziniu Yu. "Complete mitochondrial genome of the Olympia oyster (*Bivalvia*, *Ostreidae*)", *Mitochondrial DNA*, 2013 2%

Publication
  - 3** Lingfeng Kong, Yuanning Li, Kevin M. Kocot, Yi Yang, Lu Qi, Qi Li, Kenneth M. Halanych. "Mitogenomics reveals phylogenetic relationships of *Arcoida* (*Mollusca*, *Bivalvia*) and multiple independent expansions and contractions in mitochondrial genome size", *Molecular Phylogenetics and Evolution*, 2020 1%

Publication
-

4

Hong Yu, Qi Li. "Complete mitochondrial DNA sequence of *Crassostrea nippona*: comparative and phylogenomic studies on seven commercial *Crassostrea* species", *Molecular Biology Reports*, 2011

Publication

---

1 %

5

Nathalia P. Cavaleiro, Antonio M. Solé-Cava, Cláudio M. R. Melo, Luiz G. de Almeida et al. "The complete mitochondrial genome of (*Bivalvia*: *Ostreidae*) ", *Mitochondrial DNA Part A*, 2016

Publication

---

1 %

---

Exclude quotes      On

Exclude matches      Off

Exclude bibliography      On

# The complete mitochondrial DNA of the tropical oyster *Crassostrea belcheri* from the C n Gi  mangrove in Vietnam

---

## GRADEMARK REPORT

---

FINAL GRADE

**/0**

GENERAL COMMENTS

**Instructor**

---

PAGE 1

---

PAGE 2

---

PAGE 3

---

PAGE 4

---