

Rapid Detection of Heavy Metals on Waste-Water Polluted Soils Using Laser Induced Breakdown Spectroscopy (LIBS)

by Qidir Maulana Binu Soesanto

Submission date: 22-Feb-2023 03:37PM (UTC+0700)

Submission ID: 2020332881

File name: luted_Soils_Using_Laser_Induced_Breakdown_Spectroscopy_LIBS.pdf (313.8K)

Word count: 2223

Character count: 10970



Rapid Detection of Heavy Metals on Waste-Water Polluted Soils Using Laser Induced Breakdown Spectroscopy (LIBS)

Heri Sugito,* Ali Khumaeni, Qidir Maulana Binu Soesanto

Department of Physics, Faculty of Science and Mathematics, Diponegoro University, Semarang, Indonesia, herinuha@gmail.com

ARTICLE INFO

Article history:

Received : 5 April 2020

Accepted : 27 May 2020

Available online : 10 June 2020

Keywords:

LIBS

Heavy metal

Polluted soil

ABSTRACT

The Laser Induced Breakdown Spectroscopy (LIBS) method was successfully used to detect heavy metal elements in the soil polluted by waste-water from paper mills. The study was conducted using a Nd: YAG pulse laser with a wavelength of 532 nm at 83 mJ energy and 5 torr air pressure. The laser is fired at a soil sample that has been made in the form of pellets to produce plasma. The plasma emission spectrum formed is then detected by multichannel analyzer (OMA) to obtain the emission line spectrum that represents the content of atoms and molecules in the soil sample. The spectrum detected by OMA is then compared to the standard reference spectrum at NIST (National Institute of Standards and Technology) to find out the contents of an element on a contaminated soil sample. Several types of heavy metal elements Fe, Cr, C, Ca and Mn in soils contaminated by waste-water were detected using LIBS method. Based on research results (figure 2), the LIBS method is very well used for the detection of heavy metal content in polluted soils.

1. Introduction

The development of industrial estates in agricultural and surrounding areas causes a reduction in the area of agricultural land, pollution of soil and water bodies which can reduce the quality and quantity of agricultural products, disruption of the comfort and health of humans or other living things. In some waste-water in the paper industry, Pb (lead) is sometimes found which is dangerous for the environment. In addition to Pb, soils contaminated by paper mill waste-water also contain other heavy metal elements such as Zn (zinc), Cd (cadmium), Cr (chromium), Cu (copper), Fe (iron), Al (aluminum) and Hg (mercury).

The laser-induced spectroscopy (LIBS) method has been widely applied in the detection of heavy metals in polluted soils. Gibaek Kim et al [1], utilize the LIBS method by adding a chemometric method to identify the content of heavy metals in contaminated soil. From the research conducted by Akhtar et al [2], successfully combined an external magnetic field (0.3 T) with the LIBS method for detection of Cr in soil samples. The LIBS method has also been successfully applied to detect heavy metals in soils such as Cu, Ni, Cr, Pb, Fe, Mn, Ti, Si, Al [3-5].

Various methods besides LIBS have also been carried out to detect the content of heavy metals in polluted soils. Several analytical techniques are used to identify the element content in the soil to determine the level of environmental pollution [6].

Atomic absorption spectroscopy (AAS) technique is used for the analysis of heavy metal

contamination in the soil around gold mining exploration in the city of Palu [7]. But these conventional methods require complex and difficult sample preparation in the laboratory. In addition, the XRD and AAS methods require a very long time to analyze pollution on soils with a very large area so that the method is not effective and efficient. Therefore, it is necessary to develop a method that can be used for analysis of soil pollution with fast time, does not require complicated sample preparation, is able to detect all elements contained in the target sample simultaneously and has a high level of sensitivity for identification of impurities and elements Minor which is dangerous to the soil.

Soil samples are samples that have characteristics that are difficult to analyze using the LIBS method because of the matrix effect in the form of physical and chemical properties. However, this method has succeeded in analyzing heavy metal pollution in soils using LIBS method [8]. As a result, toxic and heavy metal impurities in the soil can be identified with a high level of sensitivity (ppm order). These results promise the possibility of using the LIBS method for elemental analysis in polluted soils.

Lidiane et al. (2009) conducted an experiment on LIBS for the determination of cadmium in soil [5]. The soil sample was prepared in the form of pellet prior to analysis. They concluded that the LIBS could be employed to a screening of cadmium pollution in soil. Pandhija et al. demonstrated an experiment on LIBS for the determination of heavy metals Pb in soil

[6]. Semi-quantitative analysis of Pb in the soil can be realized with a detection limit of 45 ppm. Various studies on soil analysis by using LIBS have been made as reported elsewhere [5, 7-11]. There is a lack of information dealing with the detection of oil pollution in soil by using LIBS.

Recently, laser-induced breakdown spectroscopy (LIBS) has become a great method for qualitative and quantitative analyses of sample target in various kinds of samples including liquid, metals [12, 13] and solid [14]. In this technique, a pulse neodymium yttrium aluminum garnet (Nd: YAG) laser is focused on/in a sample to induce a luminous plasma. In the plasma region, molecules, and atoms ablated from the sample can be effectively dissociated and excited. Compared to other conventional analytical methods, standard LIBS is much superior because the rapid analysis can be performed without tedious sample preparation, and it has low-cost experimental equipment [15]. Several studies have reported on the application of standard LIBS for the analysis of soil target [7]. Del'Agglio et al. (2011) have detected heavy metals elements such as Cr, Cu, Pb, and Zn in soil. A comparative study has been made by using ICP-OES. The correlation between ICP-OES and LIBS was confirmed by a satisfactory agreement [16]. However, in standard LIBS method using pulse Nd: YAG laser, the soil sample should be prepared in the form of pellet for effective dissociation and excitation process.

This research examines the LIBS method for identification of Fe, Cr, Mn, Ca, C elements and analysis of the potential for toxic metal contents in soils polluted by the paper industry waste.

2. Methodology

The equipment used in this study is (1) Nd: YAG laser as an energy source (1064 nm, 150 mJ, 7ns), (2) Optical Multichannel Analyzer (OMA) connected to (3) optical fibers, (4) Chamber as a sample container connected to (5) vacuum pumps and (6) pressure measuring equipment, (7) mirrors, (8) lenses for laser beam focusing and (9) computer. Each sample is given the same experimental treatment, which is raised at a low pressure of 5 Torr, 83 mJ energy. The arrangement of equipment used in the study is shown in the following fig. 1.

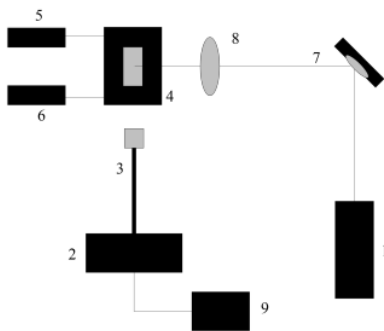


Fig. 1: The arrangement of LIBS tools in research

The samples used in this research were soil with contaminated waste and soil uncontaminated. Determination of an element in a sample can be known through spectrum graph data. The data for each detected wavelength intensity is matched with the Atomic Spectra Database Line Form reference data from NIST (National Institute of Standards and Technology) Physical Measurement Laboratory.

3. Results and Discussions

Plasma produced from the mechanism of generation by laser beam shooting has unique characteristics. That is because the ionized and excited gas from the material constituents emits specific elements in the form of wavelengths with laser color and plasma sizes that vary according to the energy level of the transition. Laser interaction with the target will cause an increase in temperature on its surface. This will cause ablation on the target surface. The target will absorb the energy of the laser beam so that the atoms at the base energy level will transition to higher energy levels. The accumulated energy will become vapor and cause the bonding of the material atoms will be broken. This process will produce plasma emissions in accordance with the conditions of the given experiment.

In this research, the laser plasma spectroscopy method is used to detect the content of heavy metal elements in uncontaminated soil samples (fig. 2a) and polluted soils (fig. 2b and 2c). The resulting spectrum is captured by the spectrum analyzer (OMA), then compared to the standard data spectrum at NIST. The obtained spectrum is limited to wavelengths of 420 nm - 435 nm. With this LIBS method, obtained spectrum data from each sample as shown in figures a, b, and c.

Fig. 2a shows the spectrum of the detection results in a non-polluted soil sample (as sample 1). Sample 1 is paddy soil taken at a distance of 100 m outside the central area of sewage treatment and paper waste water spills. From the spectrum obtained, the detected elements of Ca I (422.67nm), Fe I (427.17nm), Mn I (430.56nm and 430.82nm) and C III (432.56nm). The Ca I element in uncontaminated soil samples has the highest intensity, which is around 6321, then Mn I with an intensity of 1300, C III with an intensity of 510, Fe I with an intensity of 221. Ca is a nutrient produced from weathering primary minerals such as feldspar, ferrous magnesite, volcanic glass, mica, zeolite and apatite in the soil.

Fig. 2b shows the spectrum of detection results in soil samples 2, ie soil samples taken at a distance of 1 meter from the waste treatment spill. The graph shows elements of Fe I (421.54nm), Cr I (425.43 nm and 427.49 nm), Ca I (428.30 nm and 428.95 nm), C II (431.85 nm). From the graph shows the heavy metal element Cr which is a product of waste. Fig. 2c also shows the presence of Cr element in soil sample 3, ie soil samples taken in the community 30 meters from the waste center. However, the intensity of Cr element in the soil sample 2 is higher, namely 710 and 1803, while the sample 3 has the intensity of 433 and 539. This shows that the soil sample 2 has a greater Cr element content than the soil of sample 3.

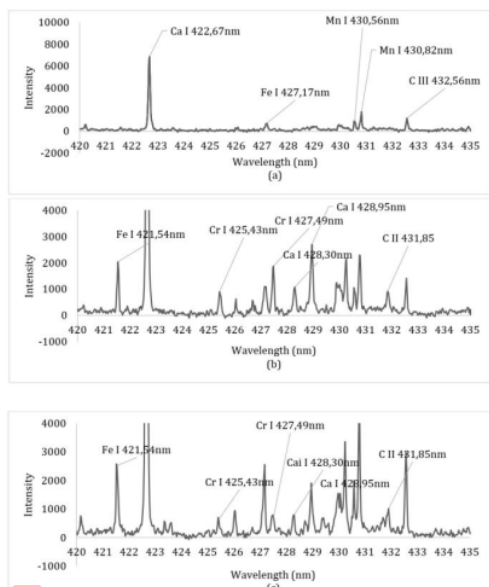


Fig. 2: The spectrum of (a) uncontaminated soils (sample 1), (b) polluted soil of sample 2 (soil samples taken at a distance of 1 meter from the waste treatment spill), (c) polluted soil of sample 3 (soil samples taken in the community 30 meters from the waste center), each spectrum are in the wavelength range of 420 nm -435 nm

Spectrum characteristics that represent elemental content have varying intensities. Each element has a different energy level from each other. The intensity of the spectrum resulting from the spectroscopic method is influenced by three factors, namely transition probability, population at each level, and sample concentration. The higher the intensity of the spectrum of an atom, it can be concluded the greater the concentration of atoms in the sample.

4. Conclusions

The spectrum confirms that the LIBS method is able to detect heavy metal elements in contaminated soil. The LIBS method clearly detects the presence of elements Fe, Cr, Mn, Ca, C with varying wavelengths which are waste paper products that pollute the soil.

Acknowledgment

The research was supported by Development Research and Application Diponegoro University.

References

1. G Kim, Y-J Yoon, H-a Kim, H-J Cho and K Park, J. Spectrochimica Acta Part B: Atomic Spectroscopy **134** 17-24 (2017)
2. M. Akhtar, A. Jabbar, S. Mehmood, N. Ahmed, R. Ahmed, M. A. Baig, J. Spectrochimica Acta Part B: Atomic Spectroscopy **148** 143-151 (2018)
3. Mirdat, Patadungan Y. S., and Isrun, J. Agrotekbbis **12** 127-134 (2013)
4. A. Khumaeni, M Ramli, Y Deguchi, Y I Lee, N Idris, K H Kurniawan, T J Lie, and K Kagawa, Applied Spectroscopy **62** 12 1344-1348 (2008)
5. D. S. Jr. Lidiane C. Nunes, L.C. Trevizan, Q. Godoi, F. O. Leme, J. W. B. Braga, and F. J. Krug, Spectrochim. Acta Part B **64** 1073 (2009)
6. A. M. Popov, F. Colao, and R. Fantoni, J. Anal. At. Spectrom. **25** 837 (2010)
7. V. K. Unnikrishnan, R. Nayak, K. Aithal, V. B. Kartha, C. Santhosh, G. P. Guptac, and B. M. Suric, Anal. Methods **5** 1294 (2013)
8. M. V. Belkov, V. S. Burakov, A. De Giacomo, V. V. Kiris, S. N. Raikov, and N. V. Tarasenko, Spectrochim. Acta Part B **64** 899 (2009)
9. K. Rifai, S. Laville, F. Vidal, M. Sabsabi, and M. Chaker, J. Anal. At. Spectrom. **27**, 276-283 (2012)
10. E. M. Cahoon and J. R. Almirall, Anal. Chem. **84** 2239-2244 (2012)
11. C. M. Li, Z. M. Zou, X. Y. Yang, Z. Q. Hao, L. B. Guo, X. Y. Li, Y. F. Lu, and X. Y. Zeng, J. Anal. At. Spectrom. **29** 1432-1437 (2014)
12. P. Yaroshchuk, D. L. Death, and S. J. Spencer, J. Anal. At. Spectrom. **27** 92-98 (2012)
13. A. K. Mykalwar, S. Sreedhar, I. Barman, N. C. Dingari, S. V. Rao, P. P. Kiran, S. P. Tewari, and G. M. Kumar, Talanta **87** 53-59 (2011)
14. E. M. Cahoon and J. R. Almirall, Appl. Opt. **49** C49-C57 (2010)
15. D. A. Cremers, and L. J. Radziemski, "Handbook of Laser-Induced Breakdown Spectroscopy John Wiley and Sons," Ltd, Chichester (2006)
16. A. W. Miziolek, V. Palleschi, and I. Schechter, "Laser-induced breakdown spectroscopy (LIBS): Fundamentals and Applications," Cambridge University Press (2006)

Rapid Detection of Heavy Metals on Waste-Water Polluted Soils Using Laser Induced Breakdown Spectroscopy (LIBS)

ORIGINALITY REPORT

22%

SIMILARITY INDEX

16%

INTERNET SOURCES

21%

PUBLICATIONS

3%

STUDENT PAPERS

PRIMARY SOURCES

1	core.ac.uk Internet Source	9%
2	Submitted to Higher Education Commission Pakistan Student Paper	2%
3	andololloIn.blogspot.com Internet Source	1%
4	www.science.gov Internet Source	1%
5	M. Akhtar, A. Jabbar, S. Mehmood, N. Ahmed, R. Ahmed, M.A. Baig. "Magnetic field enhanced detection of heavy metals in soil using laser induced breakdown spectroscopy", Spectrochimica Acta Part B: Atomic Spectroscopy, 2018 Publication	1%
6	Shabnam Shahida, Nasar Ahmed, Saima Razzaque, Abdul Jabbar et al. "Detection of toxic and trace elements in the environmental	1%

samples around an indigenous refinery in Pakistan using LIBS", Laser Physics, 2021

Publication

7

Wei Lu, Hui Luo, Linxuan He, Wenxuan Duan, Yilin Tao, Xinyi Wang, Shuaishuai Li.

"Detection of heavy metals in vegetable soil based on THz spectroscopy", Computers and Electronics in Agriculture, 2022

Publication

1 %

8

Xiaomei Lin, Yutao Huang, Jingjun Lin, Xun Gao. "The Effect of Self-absorption Compensation Methods on the quantitative analysis of soil samples using Laser-induced Breakdown Spectroscopy", Optik, 2021

Publication

1 %

9

Qingyu Lin, Zhimei Wei, Mingjun Xu, Shuai Wang, Guanghui Niu, Kunping Liu, Yixiang Duan, Jie Yang. "Laser-induced breakdown spectroscopy for solution sample analysis using porous electrospun ultrafine fibers as a solid-phase support", RSC Advances, 2014

Publication

1 %

10

web.archive.org

Internet Source

1 %

11

www.osapublishing.org

Internet Source

1 %

12

www.ncbi.nlm.nih.gov

Internet Source

<1 %

13

Guangmeng Guo, Guanghui Niu, Qi Shi, Qingyu Lin, Di Tian, Yixiang Duan. "Multi-element quantitative analysis of soils by laser induced breakdown spectroscopy (LIBS) coupled with univariate and multivariate regression methods", Analytical Methods, 2019

Publication

<1 %

14

Tian-Long ZHANG, Shan WU, Hong-Sheng TANG, Kang WANG, Yi-Xiang DUAN, Hua LI. "Progress of Chemometrics in Laser-induced Breakdown Spectroscopy Analysis", Chinese Journal of Analytical Chemistry, 2015

Publication

<1 %

15

pubs.rsc.org
Internet Source

<1 %

Exclude quotes Off

Exclude matches Off

Exclude bibliography On