

LEMBAR
HASIL PENILAIAN SEJAWAT SEBIDANG ATAU *PEER REVIEW*
KARYA ILMIAH : JURNAL ILMIAH

Judul Jurnal Ilmiah (Artikel) : FOPDT Model Based on Experimental Data from Municipal Solid Waste Incineration Process Temperature Control in Fixed Bed

Nama/ Jumlah Penulis : 1 Orang

Status Pengusul : Penulis pertama/ Penulis Korespondensi **

Identitas Jurnal Ilmiah :

- a. Nama Jurnal : *Journal of Physics and Its Applications*
- b. Nomor ISSN : [e-ISSN: 2622-5956](https://doi.org/10.14710/jpa.v4i2.12442)
- c. Vol, No., Bln Thn : vol. 4, no. 2, pp. 33-36, May. 2022
- d. Penerbit : Departemen Fisika UNDIP
- e. DOI artikel (jika ada) : <https://doi.org/10.14710/jpa.v4i2.12442>
- f. Alamat web jurnal : <https://ejournal2.undip.ac.id/index.php/jpa/article/view/12442>
- Alamat Artikel : <https://ejournal2.undip.ac.id/index.php/jpa/article/download/12442/7224>
- g. Terindex : [Science and Technology Index \(SINTA, S3\)](#)

Kategori Publikasi Jurnal Ilmiah : ☐ Jurnal Ilmiah Internasional/Internasional Bereputasi
 (beri ✓ pada kategori yang tepat) ☒ Jurnal Ilmiah Nasional Terakreditasi
☐ Jurnal Ilmiah Nasional Tidak Terakreditasi

Hasil Penilaian *Peer Review* :

Komponen Yang Dinilai	Nilai Reviewer		Nilai Rata-rata
	Reviewer 1	Reviewer 2	
a. Kelengkapan unsur isi jurnal (10%)	2	2	4
b. Ruang lingkup dan kedalaman pembahasan (30%)	5,8	5,8	5,8
c. Kecukupan dan kemutakhiran data/informasi dan metodologi (30%)	5,8	6	5,9
d. Kelengkapan unsur dan kualitas terbitan/jurnal (30%)	5,8	5,9	5,85
Total = (100%)	19,4	19,7	19,55

Semarang, 10 Mei 2023

Reviewer 1

Prof. Dr. Kusworo Adi, S.Si., M.T.

NIP. 197203171998021001

Unit Kerja : Fakultas Sains dan Matematika

Bidang Ilmu: Fisika

Reviewer 2

Prof. Dr. Heri Sutanto, S.Si., M.Si.

NIP. 197502151998021001

Unit Kerja : Fakultas Sains dan Matematika

Bidang Ilmu: Fisika

LEMBAR
HASIL PENILAIAN SEJAWAT SEBIDANG ATAU *PEER REVIEW*
KARYA ILMIAH : JURNAL ILMIAH

Judul Jurnal Ilmiah (Artikel) : FOPDT Model Based on Experimental Data from Municipal Solid Waste Incineration Process Temperature Control in Fixed Bed

Nama/ Jumlah Penulis : 1 Orang

Status Pengusul : Penulis pertama/ Penulis Korespondensi **

Identitas Jurnal Ilmiah :

- a. Nama Jurnal : *Journal of Physics and Its Applications*
- b. Nomor ISSN : [e-ISSN: 2622-5956](https://doi.org/10.14710/jpa.v4i2.12442)
- c. Vol, No., Bln Thn : vol. 4, no. 2, pp. 33-36, May. 2022
- d. Penerbit : Departemen Fisika UNDIP
- e. DOI artikel (jika ada) : <https://doi.org/10.14710/jpa.v4i2.12442>
- f. Alamat web jurnal : <https://ejournal2.undip.ac.id/index.php/jpa/article/view/12442>
- Alamat Artikel : <https://ejournal2.undip.ac.id/index.php/jpa/article/download/12442/7224>
- g. Terindex : [Science and Technology Index \(SINTA, S3\)](https://ejournal2.undip.ac.id/index.php/jpa/article/download/12442/7224)

Kategori Publikasi Jurnal Ilmiah : ☐ Jurnal Ilmiah Internasional/Internasional Bereputasi
☒ Jurnal Ilmiah Nasional Terakreditasi
☐ Jurnal Ilmiah Nasional Tidak Terakreditasi

Hasil Penilaian *Peer Review* :

Komponen Yang Dinilai	Nilai Maksimal Jurnal Ilmiah			Nilai Akhir Yang Diperoleh
	Internasional <input type="checkbox"/>	Nasional Terakreditasi <input checked="" type="checkbox"/>	Nasional Tidak Terakreditasi <input type="checkbox"/>	
a. Kelengkapan unsur isi jurnal (10%)		2		1,9
b. Ruang lingkup dan kedalaman pembahasan (30%)		6		5,8
c. Kecukupan dan kemutakhiran data/informasi dan metodologi (30%)		6		5,8
d. Kelengkapan unsur dan kualitas terbitan/jurnal (30%)		6		5,8
Total = (100%)		20		19,3
Nilai Pengusul = 100% x 19,3 = 19,3				

Catatan Penilaian artikel oleh Reviewer :

1. Kesesuaian dan kelengkapan unsur isi jurnal:

Artikel telah ditulis sesuai dengan standar *Journal of Physics and Its Applications*, sebuah jurnal terakreditasi Sinta 3

Latar belakang tentang system pengendalian dua posisi memberikan dasar yang cukup kuat untuk mengemukakan sesuatu yang baru dalam artikel. Kajian ini dikemukakan dengan baik dan jelas.

2. Ruang lingkup dan kedalaman pembahasan:

Pembahasan dengan menggunakan metoda yang diusulkan dalam artikel cukup komprehensif. Diskusi telah dilakukan dengan para peneliti lain melalui referensi yang disitasi. Sebuah artikel yang menarik.

3. Kecukupan dan kemutakhiran data/informasi dan metodologi:

Data dan referensi mutakhir, termasuk referensi dari kajian yang dilakukan oleh peneliti. Metoda standar dibidangnya dan akan bisa direfleksikan oleh peneliti lain sebidang.

4. Kelengkapan unsur dan kualitas terbitan:

Penerbitan sudah sangat bagus tertata rapi *Journal of Physics and Its Applications*, sebuah jurnal terakreditasi Sinta 3 yang diterbitkan oleh Departemen Fisika UNDIP, nilai maksimum 20

Semarang, 5 Mei 2023

Reviewer 1

Prof. Dr. Kusworo Adi, S.Si., M.T.

NIP. 197203171998021001

Unit Kerja : FSM, Bidang Ilmu : Fisika

LEMBAR
HASIL PENILAIAN SEJAWAT SEBIDANG ATAU *PEER REVIEW*
KARYA ILMIAH : JURNAL ILMIAH

Judul Jurnal Ilmiah (Artikel) : FOPDT Model Based on Experimental Data from Municipal Solid Waste Incineration Process Temperature Control in Fixed Bed

Nama/ Jumlah Penulis : 1 Orang

Status Pengusul : Penulis pertama/ Penulis Korespondensi **

Identitas Jurnal Ilmiah :

- a. Nama Jurnal : *Journal of Physics and Its Applications*
- b. Nomor ISSN : [e-ISSN: 2622-5956](https://doi.org/10.14710/jpa.v4i2.12442)
- c. Vol, No., Bln Thn : vol. 4, no. 2, pp. 33-36, May. 2022
- d. Penerbit : Departemen Fisika UNDIP
- e. DOI artikel (jika ada) : <https://doi.org/10.14710/jpa.v4i2.12442>
- f. Alamat web jurnal : <https://ejournal2.undip.ac.id/index.php/jpa/article/view/12442>
- Alamat Artikel : <https://ejournal2.undip.ac.id/index.php/jpa/article/download/12442/7224>
- g. Terindex : [Science and Technology Index \(SINTA, S3\)](https://ejournal2.undip.ac.id/index.php/jpa/article/download/12442/7224)

Kategori Publikasi Jurnal Ilmiah : ☐ Jurnal Ilmiah Internasional/Internasional Bereputasi
 (beri ✓ pada kategori yang tepat) ☒ Jurnal Ilmiah Nasional Terakreditasi
☐ Jurnal Ilmiah Nasional Tidak Terakreditasi

Hasil Penilaian *Peer Review* :

Komponen Yang Dinilai	Nilai Maksimal Jurnal Ilmiah			Nilai Akhir Yang Diperoleh
	Internasional <input type="checkbox"/>	Nasional Terakreditasi <input checked="" type="checkbox"/>	Nasional Tidak Terakreditasi <input type="checkbox"/>	
a. Kelengkapan unsur isi jurnal (10%)		2		2
b. Ruang lingkup dan kedalaman pembahasan (30%)		6		5,8
c. Kecukupan dan kemutakhiran data/informasi dan metodologi (30%)		6		6
d. Kelengkapan unsur dan kualitas terbitan/jurnal (30%)		6		5,9
Total = (100%)		20		19,7
Nilai Pengusul = 100% x 19,7 = 19,7				

Catatan Penilaian artikel oleh Reviewer :

1. Kesesuaian dan kelengkapan unsur isi jurnal:

Artikel telah ditulis sesuai dengan standar penulisan *Journal of Physics and Its Applications*, sebuah jurnal terakreditasi Sinta 3. Latar belakang tentang sistem pengendalian dua posisi memberikan dasar yang cukup kuat untuk mengemukakan sesuatu yang baru dalam artikel. Kajian ini dikemukakan dengan baik dan jelas.

2. Ruang lingkup dan kedalaman pembahasan:

Pembahasan dengan menggunakan metoda yang diusulkan dalam artikel cukup komprehensif. Diskusi telah dilakukan dengan para peneliti lain melalui referensi yang disitasi. Sebuah artikel yang menarik.

3. Kecukupan dan kemutakhiran data/informasi dan metodologi:

Data dan referensi mutakhir, termasuk referensi dari kajian yang dilakukan oleh peneliti. Metoda standar dibidangnya dan akan bisa direfleksikan oleh peneliti lain sebidang. Gambar 3 tidak ada keterangan parameter sumbu X dan sumbu Y.

4. Kelengkapan unsur dan kualitas terbitan:

Penerbitan sudah sangat bagus tertata rapi *Journal of Physics and Its Applications*, sebuah jurnal terakreditasi Sinta 3 yang diterbitkan oleh Departemen Fisika UNDIP, nilai maksimum 20

Semarang, 5 Mei 2023

Reviewer 2

Prof. Dr. Heri Sutanto, S.Si., M.Si.

NIP. 197502151998021001

Unit Kerja : Fakultas Sains dan Matematika

Bidang Ilmu: Fisika



Ainie Khuriati

Edit

Delete

FOPDT Model Based on Experimental Data from Municipal Solid Waste Incineration Process Temperature Control in Fixed Bed

Authors Ainie Khuriati

Publication date 2022/5/28

Journal Journal of Physics and Its Applications

Volume 4

Issue 2

Pages 33-36

Publisher Diponegoro University Semarang Indonesia

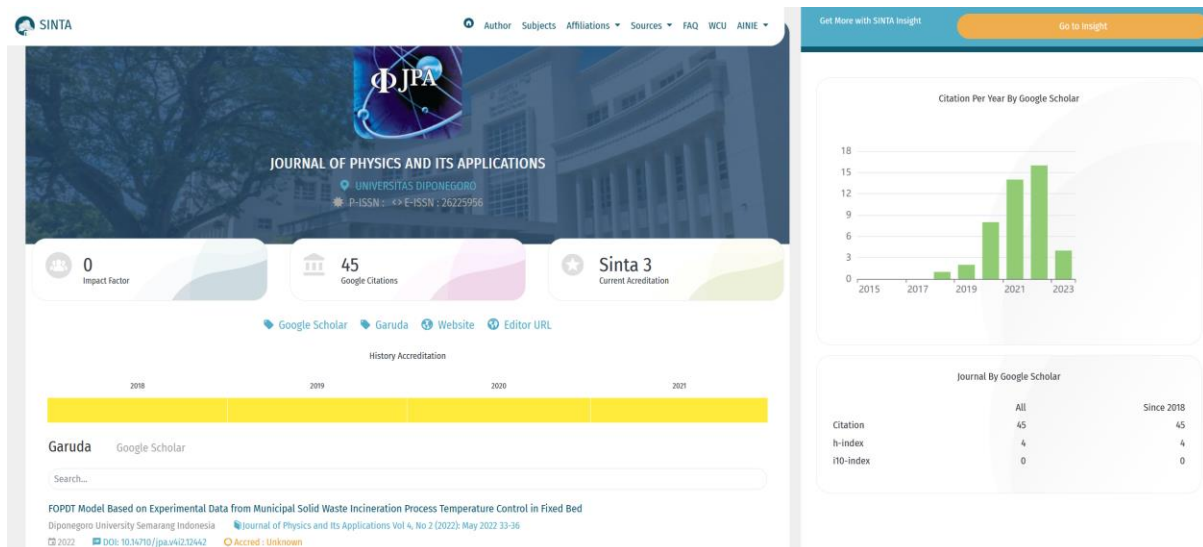
Description Incineration is the waste combustion at controlled high temperatures which converts waste into flue gas with the main components being CO₂ and water. Temperature control aims to ensure safe combustion operation. In this study, the temperature controller uses a two-position temperature controller whose main components include two thermocouples, MAX6675, two burners, blower, Arduino, and one laptop. Temperature controllers were used to maintain the temperature in the combustion chamber and afterburner at the specified setpoint, namely 630 °C and 850 °C, respectively. To test the performance of the controller, two models were made. The modeling was made using the experimental data obtained. The results show that the model and experimental results are in good agreement.

Total citations [Cited by 2](#)

Total citations [Cited by 2](#)



Scholar articles [FOPDT Model Based on Experimental Data from Municipal Solid Waste Incineration Process Temperature Control in Fixed Bed](#)
A Khuriati - Journal of Physics and Its Applications, 2022
[Cited by 2](#) [Related articles](#) [All 2 versions](#)



Journal of Physics and Its Applications
Department of Physics
DIPONEGORO UNIVERSITY

Home About People Submissions Issue Announcements

Search contents Register Login

Home > Archives > Vol 4, No 2 (2022) > Khuriati

DOI: <https://doi.org/10.14710/jpa.v4i2.12442> Check for updates

FOPDT Model Based on Experimental Data from Municipal Solid Waste Incineration Process Temperature Control in Fixed Bed

*Ainie Khuriati - Department of Physics, Faculty of Science and Mathematics, Diponegoro University, Semarang, Indonesia

under <http://creativecommons.org/licenses/by-sa/4.0>

How to cite (IEEE): A. Khuriati, "FOPDT Model Based on Experimental Data from Municipal Solid Waste Incineration Process Temperature Control in Fixed Bed," *Journal of Physics and Its Applications*, vol. 4, no. 2, pp. 33-36, May 2022. <https://doi.org/10.14710/jpa.v4i2.12442>

Article Info

Section: Articles
Language : EN
In Vol 4, No 2 (2022): May 2022
Statistics: 332 282

Number of
avg: 0.166k
Total

Editor in Chief



Dr. Eng. Ali Khumaeni (ScopusID: [12240608200](https://orcid.org/0000-0001-9142-1242))

Department of Physics, Universitas Diponegoro, Indonesia

International Editorial Boards



Prof. Dr. Masahiko Tani (ScopusID: [7202550229](#))
Research Center for Development of Far-Infrared Region, University of Fukui, Japan



Prof. Dr. Geoff Dougherty (ScopusID: [56233056200](#))
Applied Physics and Medical Imaging, California State University, Channel Islands, United States of America, United States



Prof. Dr. Andriwo Rusydi (ScopusID: [6507708145](#))
 Department of Physics, National University of Singapore, Singapore



Prof. Dr. Elmer Estacio (ScopusID: [15135417200](#))
National Institute of Physics, University of the Philippines, Philippines

Vol 4, No 2 (2022): May 2022

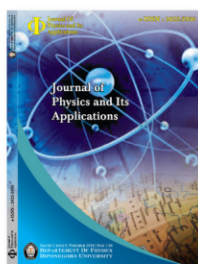


Table of Contents

Articles

Analysis of Porous Silicon Formation on N-type Si (100) using Laser-Assisted Electrochemical Anodization Method Risa Suryana, Nabila Qurrota Aini Citations: 0 Language: EN DOI: 10.14710/jpa.v4i2.12664 Received: 2 Nov 2021; Revised: 6 Feb 2022; Accepted: 16 Feb 2022; Available online: 27 May 2022; Published: 28 May 2022.	PDF 28-32
FOPDT Model Based on Experimental Data from Municipal Solid Waste Incineration Process Temperature Control in Fixed Bed Ainie Khuriati Citations: 1 Language: EN DOI: 10.14710/jpa.v4i2.12442 Received: 5 Oct 2021; Revised: 19 Feb 2022; Accepted: 21 Feb 2022; Available online: 27 May 2022; Published: 28 May 2022.	PDF 33-36
The Mass Distribution of Soputan Volcano Based on Gravity Data Dave Emmanuel Haning, Agus Setyawan, Rina Dwi Indriana Citations: 0 Language: EN DOI: 10.14710/jpa.v4i2.13230 Received: 4 Feb 2022; Revised: 6 Apr 2022; Accepted: 16 Apr 2022; Available online: 27 May 2022; Published: 28 May 2022.	PDF 37-41
Magnetic Susceptibility of Volcanic Rocks from Pahae Julu Region, North Sumatera Province Nurmala Dewi Siregar, Hamdi Rifai, Syafriani Syafriani, Ahmad Fauzi, Fatni Mufti Citations: 1 Language: EN DOI: 10.14710/jpa.v4i2.13597 Received: 4 Feb 2022; Revised: 10 Apr 2022; Accepted: 16 Apr 2022; Available online: 27 May 2022; Published: 28 May 2022.	PDF 42-46
Effect of Yield Silver Nanoparticles in Enhancing Raman Signal of SERS Substrate Fabricated on Whatman Filter Paper Affi Nur Hidayah, Yuliati Herbani, Djoko Triyono, Rosari Saleh Citations: 0 Language: EN DOI: 10.14710/jpa.v4i2.13226 Received: 22 Dec 2022; Revised: 22 Apr 2022; Accepted: 24 Apr 2022; Available online: 27 May 2022; Published: 28 May 2022.	PDF 47-50

FOPDT Model Based on Experimental Data from Municipal Solid Waste Incineration Process Temperature Control in Fixed Bed

by Ainie Khuriati

Submission date: 18-May-2023 06:44AM (UTC+0700)

Submission ID: 2095807089

File name: Waste_Incineration_Process_Temperature_Control_in_Fixed_Bed.pdf (414.86K)

Word count: 2451

Character count: 13111

Journal of Physics and Its Applications

Journal homepage : <https://ejournal2.undip.ac.id/index.php/jpa/index>

FOPDT Model Based on Experimental Data from Municipal Solid Waste Incineration Process Temperature Control in Fixed Bed

Ainie Khuriati*

Department of Physics, Faculty of Science and Mathematics, Diponegoro University, Semarang, Indonesia

*Corresponding author: ainiekhuriati@fisika.fsm.undip.ac.id

ARTICLE INFO

Article history:

Received: 5 October 2021

Accepted: 21 February 2022

Available online: 27 May 2022

Keywords:

FOPDT Model

Incinerator

Microcontroller

Temperature

ABSTRACT

Incineration is the waste combustion at controlled high temperatures which converts waste into flue gas with the main components being CO₂ and water. Temperature control aims to ensure safe combustion operation. In this study, the temperature controller uses a two-position temperature controller whose main components include two thermocouples, MAX6675, two burners, blower, Arduino, and one laptop. Temperature controllers were used to maintain the temperature in the combustion chamber and afterburner at the specified setpoint, namely 630°C and 850°C, respectively. To test the performance of the controller, two models were made. The modeling was made using the experimental data obtained. The results show that the model and experimental results are in good agreement.

1. Introduction

Incineration is one of the popular methods for waste management because this is capable to reduce, to produce energy, and destroy pathogen agents [1,2]. Mass combustion technology has been widely used to solve solid waste disposal problems such as in China and Japan [3]. There are 1179 incinerators in the worldwide that are used to generate electricity with a capacity of 700,000 tons/day [3]. The combustion process in primary chamber is included four successive sub-processes: drying, pyrolysis and volatile matter burning and char gasification, with the consequent formation of ashes.

Incineration is a super-stoichiometric high temperature solid waste combustion technique by applying a certain amount of oxygen. The incineration operating temperature ranges from 750-1100°C [4]. Combustion produces hot flue gases, mainly CO₂ and H₂O. The incineration is a simple and proven technique that offers flexibility in processing solid fuels with a wide variety of compositions, sizes and properties. In addition, it is very suitable for treating waste containing toxic substances, because of the high operating temperature and the development of stack with adequate gas cleaning systems. Currently, the waste incinerators are classified mainly into fuel bed (fixed, moving, rotating) and fluidized bed [5-7].

Over the past 1 decade, many studies have been carried out on incineration processes, one area of major interest is the numerical model of waste incineration along with experimental validation [8-10]. A numerical model may be built on the basis of dynamic and thermodynamic models, but these models are usually too complex to be used in real-

time control. The simplest of real-time control is two positions control to maintain control between two set points. The two positions temperature controller is the easiest controller to apply after the fire has self-ignited.

The most important temperature control objectives are to maintain a high temperature and stabilize temperatures $\geq 850^\circ\text{C}$. At this temperature ensures crushing of pathogens [11]. Higher temperatures offer benefits regarding MSW dryness, residual carbon combustion ratio, reduction of emissions, and steam production [2]. Among the emissions, dioxins or polychlorinated dibenzo-p-dioxins (PCDDs) and polychlorinated dibenzofurans (PCDFs) are the most harmful. Dioxins generation in post-combustion zones can occur in two ways, via heterogeneous (200-400°C) and homogeneous synthesis (400-800°C) [11]. Control of dioxin levels in the combustion gas of the waste incineration can be achieved primarily by controlling temperature in the combustion chamber [12].

The dynamics of many industrial processes can be modeled by a stable first-order transfer function plus dead time (FOPDT) [13-15]. This method based on process step measurement responses, are still important because they are simple physical interpretation, and its easy implementation in industrial environments [13,14].

The purpose of temperature control is to stabilize the incineration temperature at the desired value. Therefore, this paper presents a method to modelling temperature control in the primary and secondary chambers of the household scale fixed bed incinerator.

2. Methods

2.1 Experimental rig

The incinerator consists of the main combustion chamber, an after-burner, a wet scrubber, and a stack with a sampling hole, shown in Fig. 1. The combustion chamber and after-burner have dimensions of 605 mm in length × 900 mm in diameter and 900 mm × 250 mm × 150 mm, respectively. A channel is used to connect the combustion chamber to the after-burner directly above it. The walls of the incinerator can withstand heat of up to 1000 °C, made of refractory bricks. The sampling hole is in the stack at a height of 2500 mm from the ground. The combustion chamber has a door 900 mm in diameter where the feedstock to be combusted enters. Experimental Rig includes the incinerator, air supply section, burner, after burner, and temperature monitoring and control system. The capacity of the incinerator is 30-80 kg/hr. of waste.

The required combustion air enters combustion chambers through the burner and after burner. Burner and after burner are tilted 45°C and perpendicular, respectively.

Temperature monitoring is essential for process control by measuring temperatures in several critical areas of the incineration plant and for complying with incineration rules (i.e. 850°C/2s). The feeding process is continuous for one hour. The control operation is to control the combustion temperature. In this process, liquefied petroleum gas (LPG) is added to keep the temperature at a given setpoint.

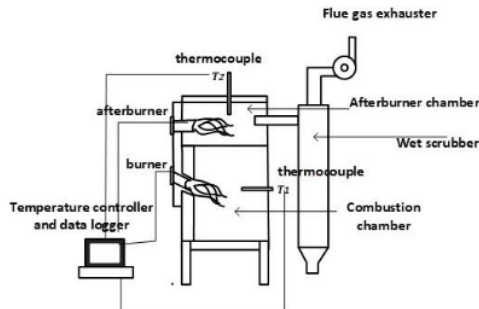


Fig. 1: Experimental rig.

Fig. 2 shows the flowchart temperature monitoring and control system. The temperature is using a K-thermocouple. Serial communication using Arduino. The relay functions to turn on/off the burner. The thermocouple T1 is placed on the combustion chamber door opposite the burner. The T2 thermocouple is mounted at the top of the afterburner chamber. All parameters are controlled via a computer.

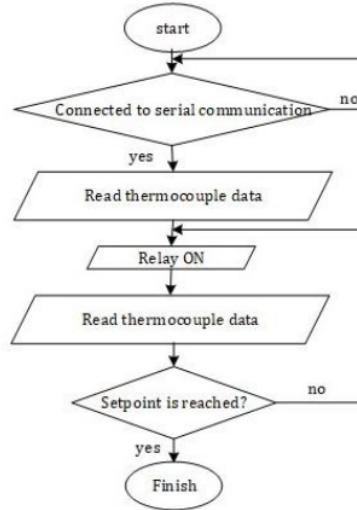


Fig. 2: Flowchart temperature monitoring and control system.

The two-position control strategy, which is the simplest automatic controller, inexpensive, simple construction, and energy saving capability. The controller output signal is $m(t)$ and the driven error signal is $e(t)$. In a two-position controller, the signal $u(t)$ remains at its maximum M_1 or minimum M_2 value, depending on whether the actuation error signal $e(t)$ is positive or negative, so

$$\begin{aligned} m(t) &= M_1 \text{ for } e(t) > 0 \\ m(t) &= M_2 \text{ for } e(t) < 0 \\ e(t) &= r(t) - y(t) \end{aligned} \quad (1)$$

Where M_1 and M_2 are constants, $r(t)$ is the setpoint, and $y(t)$ is the process output or controlled variable. The minimum value M_2 is usually either zero or $-M_1$.

2.2 FOPDT Model

In most control systems with feedback loops, the system cannot respond instantly to any disturbance and it takes time (delay) until the controller output gives any action on the measured output. This delay time is known as dead time. The first-order plus time delay (FOPTD) is a model the most commonly used to describe the dynamics of many industrial processes.

In the case of an incinerator, if the access door is opened, the temperature drops, the controller senses the difference, turns on the burner and the temperature is brought back to the setpoint, this takes time. Dead time has the effect of hiding disturbance from the controller and limiting its ability to react quickly. The transfer function $G_p(s)$ has the form [13,16–19]:

$$G_p(s) = \frac{Y(s)}{M(s)} = e^{-\tau s} \frac{K}{Ts+1} \quad (2)$$

where $Y(s)$ and $M(s)$ are output and input process, respectively. K is the gain of the system ($K \neq 0$), τ is the time delay and T is the time constant ($T > 0$). Eq. (2) is written in the form of a differential equation (16):

$$y(t) + T \frac{dy}{dt} = Km(t - \tau) \quad (3)$$

Eq. (2) and Eq. (3) is used to obtain for the FPODT approximation model. This model requires three parameters. These parameters provide important information about the behavior of the process variable (PV) which is measured whenever there is a change in the controller output signal (CO): (a) process gain K (tells the direction and how far the PV will travel), (b) Process time constant T (the length of time the PV moves after starting its response), (c) Process dead/delay time τ (delay time before the first PV begins to respond).

3. Results and Discussion

Both primary and secondary combustion chamber temperatures are controlled automatically using microcontroller by a two-positions controller with relay. The temperature in each chamber is monitored, this is controlled based on feedback from the thermocouple. Auxiliary burners are used to maintain the setpoint. Fig.3 shows the results of temperature control in the primary and secondary rooms. The combustion temperature setpoints in the primary and secondary chambers are 630°C and 850°C respectively. The determination of the setpoint is based on the temperature at which the pyrolysis occurs. Pyrolysis typically occurs at temperatures ranging from 300°C and 650°C (20,21). These graphs show that the initial or ambient temperature is 27°C.

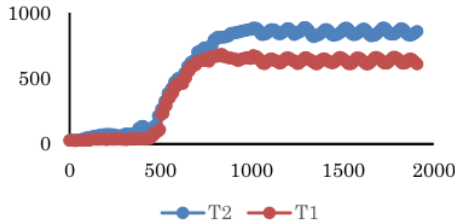


Fig. 3: Experiment Data of incineration on-off temperature control.

Experimental two positions controller performance testing is also carried out using the model. In this model, the model for thermal dynamics is derived only based on the recorded two-position controller response data. Examination of the recorded data shows that the dynamics of the thermal combustion process is a first order system.

From the investigation data recorded in Fig. 3, the temperature control parameters obtained are presented in table 1. The models are simulated using MATLAB based on table 1. The values rise time 1 and

rise time 2 are the times where the response attains 28.3% and 63.2% of its final value. The calculations of the first-order-plus-deadtime responses are: Setpoint 650°C:

$$G_{p1} = e^{-472s} \frac{609}{85.5s + 1}$$

Setpoint 850°C:

$$G_{p2} = e^{-410s} \frac{825}{216s + 1}$$

Table 1. Temperature Control Parameter.

Chamber	Setpoint (°C)	Steady State (°C)	Settling time (s)	Rise Time 1 (s)	Rise Time 2 (s)
Primary (red)	630	636	1035	500	557
Secondary (blue)	850	853	1044	481	626

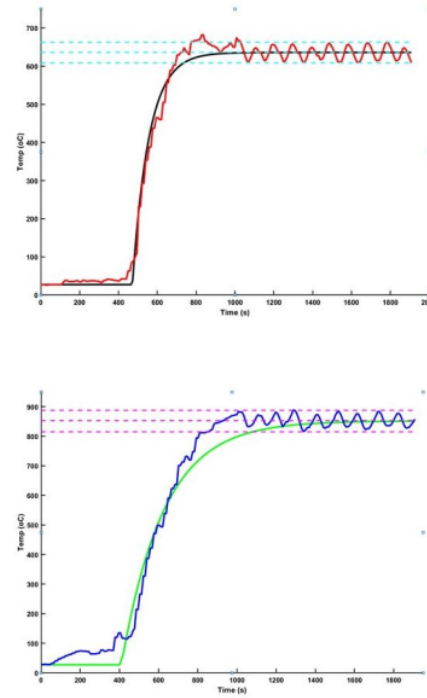


Fig. 4: Experimental vs simulated response to step change for setpoint (a). 630°C, (b). 850°C.

Fig.4(a) –(b) show the model responses. The black and green line in graph represent the responses of the model in the primary and secondary chamber. The dotted lines in the middle indicate steady state. The model and the experimental data are in good agreement.

4. Conclusion

In this paper, a method for modeling the first order plus time delay is presented. The modeling is made based on the experiments that have been done. This model does not require complicated numerical calculations. This is derived based on the recorded two-position controller response data and the result shows in good agreement with the experimental.

5. Conflict of Interest

The authors declare that they have no conflict of interest.

Acknowledgements

This research was supported by Ministry of Education and Culture of the Republic of Indonesia.

References

- [1] A. Khuriati, Purwanto P., Huboyo H. S., Sumariyah, Suryono, and Putranto A. B., "Numerical calculation based on mass and energy balance of waste incineration in the fixed bed reactor," *J. Phys. Conf. Ser.*, 1524, 1, (2020).
- [2] Shen K., Lu J., Li Z., and Liu G., "An adaptive fuzzy approach for the incineration temperature control process," *Fuel*, 84, 9, 1144–50, (2005).
- [3] Lu J., Zhang S., Hai J., and Lei M., "Status and perspectives of municipal solid waste incineration in China: A comparison with developed regions," 69, 170–86, (2017).
- [4] Hoang Q. N., Vanierschot M., Blondeau J., Croymans T., Pittoors R., and Van C. J., "Review of numerical studies on thermal treatment of municipal solid waste in packed bed combustion," *Fuel Commun.*, 7, 100013, (2021).
- [5] Nixon J. D., Wright D. G., Dey P. K., Ghosh S. K., and Davies P. A., "A comparative assessment of waste incinerators in the UK," *Waste Manag.*, 33, 11, 2234–44, (2013).
- [6] Leckner B., "Process aspects in combustion and gasification Waste-to-Energy (WtE) units. *Waste Manag.*, 37, 13–25, (2015).
- [7] Lombardi L., Carnevale E., and Corti A., "A review of technologies and performances of thermal treatment systems for energy recovery from waste," *Waste Manag.*, 37, 26–44, (2015).
- [8] Magnanelli E., Tranås O. L., Carlsson P., Mosby J., and Becidan M., "Dynamic modeling of municipal solid waste incineration," *Energy*, 209, 118426, (2020).
- [9] Gu T., Yin C., Ma W., and Chen G., "Municipal solid waste incineration in a packed bed: A comprehensive modeling study," *Gu, T. et al. (2019) 'Municipal solid waste incineration in a packed bed: A comprehensive modeling study with experimental validation,' Applied Energy*, 247, 127–39, (2019).
- [10] Yui K., Kuramochi H., and Osako M., "Measurement and modeling of heavy metal behaviors during the incineration of RDF in a pilot-scale kiln incinerator-Part 1: Modeling using multizonal thermodynamic equilibrium calculation," *Process. Saf. Environ. Prot.*, 150, 373–84, (2021).
- [11] Wei J., Li H., and Liu J., "Fate of dioxins in a municipal solid waste incinerator with state-of-the-art air pollution control devices in China," *Environ. Pollut.*, 289, 117798, (2021).
- [12] Costa M., Dell'Isola M., and Massarotti N., "Temperature and residence time of the combustion products in a waste-to-energy plant," *Fuel*, 102, 92–105, (2012).
- [13] Madady A. and Reza-Alikhani H. R., "Stabilization of control loops consisting of FOPDT process and parameter-dependent PID controller," *J. Process. Control*, 22, 9, 1688–701, (2012).
- [14] Fedele G., "A new method to estimate a first-order plus time delay model from step response," *J. Franklin Inst.*, 346, 1, 1–9, (2009).
- [15] Júnior G. A., Dos Santos J. B. M., and Barros P. R., "On Simple Identification Techniques for First-Order plus Time-Delay Systems," *IFAC Proc. Vol.* 42, 10, 605–10, (2009).
- [16] Cox C., Tindle J., and Burn K., "A comparison of software-based approaches to identifying FOPDT and SOPDT model parameters from process step response data," *Appl. Math. Model.*, 40, 1, 100–14, (2016).
- [17] Yildirim U., Mutlu I., and Söylemez M. T., "An optimal robust tuning method for first order plus dead time systems with parameter uncertainty," *IFAC-Papers OnLine*, 28, 14, 126–31, (2015).
- [18] Juchem J., Dekemele K., Chevalier A., Loccufer M., and Ionescu C. M., "First order plus frequency dependent delay modeling: New perspective or mathematical curiosity?" *Conf. Proc. - IEEE Int. Conf. Syst. Man. Cybern.*, 2025–30, (2019).
- [19] Muresan C. I. and Ionescu C. M., "Generalization of the FOPDT model for identification and control purposes," *Processes*, 8, 6, 1–17, (2020).
- [20] Mohan D., Pittman C. U., and Steele P. H., "Pyrolysis of wood/biomass for bio-oil: A critical review," *Energy and Fuels*, 20, 3, 848–89, (2006).
- [21] Matsakas L., Gao Q., Jansson S., Rova U., and Christakopoulos P., "Green conversion of municipal solid wastes into fuels and chemicals," *Electron. J. Biotechnol.*, 26, 69–83, (2017).

FOPDT Model Based on Experimental Data from Municipal Solid Waste Incineration Process Temperature Control in Fixed Bed

ORIGINALITY REPORT

14%

SIMILARITY INDEX

6%

INTERNET SOURCES

11%

PUBLICATIONS

5%

STUDENT PAPERS

PRIMARY SOURCES

1

Submitted to City University of Hong Kong

Student Paper

2%

2

Giuseppe Fedele. "A new method to estimate a first-order plus time delay model from step response", Journal of the Franklin Institute, 2009

Publication

2%

3

advantage-of-feedback-control-system-over-manual-7280.peatix.com

Internet Source

1%

4

Madady, Ali, and Hamid-Reza Reza-Alikhani. "Stabilization of control loops consisting of FOPDT process and parameter-dependent PID controller", Journal of Process Control, 2012.

Publication

1%

5

Submitted to Monash University

Student Paper

1%

6	"Advanced, Contemporary Control", Springer Science and Business Media LLC, 2020 Publication	1 %
7	R. el Asri, D. Baxter. "Process Control in Municipal Solid Waste Incinerators: Survey and Assessment", Waste Management & Research, 2016 Publication	1 %
8	acikbilim.yok.gov.tr Internet Source	1 %
9	sci-hub.se Internet Source	1 %
10	biblio.vub.ac.be Internet Source	1 %
11	Cox, Chris, John Tindle, and Kevin Burn. "A comparison of software-based approaches to identifying FOPDT and SOPDT model parameters from process step response data", Applied Mathematical Modelling, 2016. Publication	1 %
12	M Akpinar-Elci. "Importance of work intensity on respiratory problems in hairdressers", Occupational and Environmental Medicine, 9/1/2002 Publication	1 %

13	Submitted to October University for Modern Sciences and Arts (MSA)	<1 %
Student Paper		

14	link.springer.com	<1 %
Internet Source		

15	www.semanticscholar.org	<1 %
Internet Source		

Exclude quotes Off

Exclude matches Off

Exclude bibliography On

FOPDT Model Based on Experimental Data from Municipal Solid Waste Incineration Process Temperature Control in Fixed Bed

GRADEMARK REPORT

FINAL GRADE

/0

GENERAL COMMENTS

Instructor

PAGE 1

PAGE 2

PAGE 3

PAGE 4