



THE EFFECT OF Ipomea batatas EXTRACT TO THE INDUCTION APOPTOSIS ON RAJI CELL LINES



Dwi Sutningsih
Faculty of Public Health Diponegoro University
dwisningsih@yahoo.co.id

BACKGROUND :

The appearance of cancer cell resistance to anticancers and disadvantage side effects inspire researchs to prove activity of medicinal plants traditionally used for the treatment of cancer. One of tool to evaluate anticancer activity can be conducted by apoptotic activity.

OBJECTIVE :

The study was conducted to evaluate the apoptotic activity of methanol extract of Ipomea batatas on raji cell lines



METHODE :

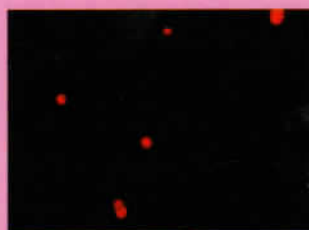
The apoptotic activities of methanol extract of I. batatas were tested on Raji cell lines by evaluating the number of cells using ethidium bromide colouring.

RESULT & CONCLUSION :

The result showed that methanol extract of I. batatas possessed cytotoxic effect without induction of apoptosis on Raji cell lines.



Control of Raji Cell Line (No Apoptosis)



Treatment of Ipomea batatas 10 ug/ml
(No apoptosis)



REFERENCE

- Anonim, 1995, *Cancer Basic Fact: Cancer Fact & Figures*, America Cancer Society revised 1/1995.
- Best, Ben, 1996, *Cancer Death-Causes and Prevention*, Scientific American, nl
- Hoffman, E.J.m 1999, *Cancer and the Search for Selective Biochemical Inhibitors*, CRC Press, Boca Raton, London.
- Saphiro, Geoffrey I. dan Harper, J., Wade, 1999, Anticancer drug targets : cell cycle and checkpoint control, *J Clin Invest.* 104: 1645-53.

INTERNATIONAL SEMINAR
CHEMOPREVENTION FOR HEALTH PROMOTION AND BEAUTY
Yogyakarta, October 9, 2010