

[Back to results](#) | [Previous](#) 3 of 25 [Next](#)[Download](#) [Print](#) [Save to PDF](#) [Add to List](#) [Create bibliography](#)**Waste Forum** • Issue 1, Pages 37 - 44 • 2022**Document type**

Article

Source type

Journal

ISSN

18040195

[View more](#)

Utilization of Solid Waste from Landfill Passive Zone to Treat Leachate Through A Combination of Leachate Recirculation and Bulking Agent

[Využití pevného odpadu z pasivní zóny skládky do upraveného výluhu kombinací recirkulace výluhu a objemového činidla]

[Oktiawan, Wiharyanto^a](#) ; [Priyambada, Ika Bagus^a](#); [Purwono, Purwono^b](#) [Save all to author list](#)

^a Department of Environmental Engineering, Faculty of Engineering, Diponegoro University, Jl. Prof. Soedarto, SH, Tembalang, Semarang, 50275, Indonesia

^b Center for Science and Technology, UIN Raden Mas Said Surakarta, Jl. Pandawa, Pucangan, Kartasura, 57168, Indonesia

9

Views count

[View all metrics](#) [Full text options](#) [Export](#) [Abstract](#)[Author keywords](#)[Reaxys Chemistry database information](#)[Sustainable Development Goals 2023](#)[SciVal Topics](#)[Metrics](#)**Abstract**

Real evidence of the Municipal Solid Waste (MSW) decomposition process is the emergence of pollutants as leachate, which has a chemical composition that is difficult to degrade (recalcitrant compounds) and causes pollution of water bodies. On the other hand, waste from the passive zone landfill is not utilized at all. The aim of this study was to determine the effect of adding solid waste from landfill passive zone as bulking agent to treat fresh leachate with a combination of the recirculation process. MSW + bulking agent (70%: 30%, v/v) was recirculated using fresh leachate with a flow rate of 1 L/min for 30 days. Reactor without recirculation and bulking agent was used as control.

Cited by 0 documents

Inform me when this document is cited in Scopus:

[Set citation alert](#) **Related documents**

Reutilization of high COD leachate via recirculation strategy for methane production in anaerobic digestion of municipal solid waste: Performance and dynamic of methanogen community

Feng, S. , Hong, X. , Wang, T. (2019) *Bioresource Technology*

MSW stabilization in an anaerobic bioreactor landfill and evaluation of in-situ leachate treatment potential with the help of quadric model

Nain, A. , Lohchab, R.K. , Singh, K. (2021) *Journal of Material Cycles and Waste Management*

Effect of leachate recirculation and bulking agent on leachate quality

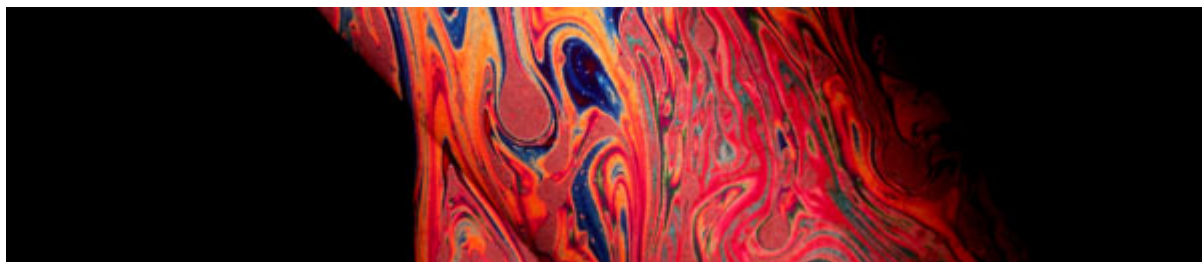
Oktiawan, W. , Priyambada, I.B. , Purwono, P. (2021) *IOP Conference Series: Earth and Environmental Science*

[View all related documents based on references](#)

Find more related documents in Scopus based on:

[Authors](#) [Keywords](#)

- [NOVINKY](#)
- [PRÁVNÍ PŘEDPISY](#)
- [ČASOPIS ODPADOVÉ FÓRUM](#)
- [WASTE FORUM](#)
- [EU ETV](#)
- [TVIP](#)
- [PVO](#)
- [O NÁS](#)



Více času na podstatné



WASTE FORUM 1/2022



DOWNLOAD

INDEX

SOUHRNY

ABSTRACTS

Úvodní slovo šéfredaktora	<u>3</u>
Editorial	<u>4</u>
Pro autory / For authors	<u>5</u>
Study of the influence of temperature and reducing agents on the chromium content in slag in the air atmosphere	<u>6</u>

Studium termické redukce chromu ze strusky pomocí redukčních činidel v atmosféře vzduchu
Vladislav KURKA, Petr JONŠTA, Marek VINDYŠ, Roman NOGA, Ondřej KOTÁSEK, Marek DOBIÁŠ

14

Effect of chemical additives (coagulants) on the nutritional quality of compost prepared from poultry litter

Vliv chemických přísad (koagulantů) na nutriční kvalitu kompostu připraveného z drůbežího steliva

Adila BASHIR, Mohammad NAFEES, Nazish Huma KHAN, Farooq AHMAD

26

Retail Chains Under the Food Waste Spotlight: the Case Study Of the Czech Republic

Maloobchodní řetězce ve světle plýtvání potravinami: Případová studie České republiky

Iveta BOSKOVA, Marcela KORMANAKOVA

37

Utilization of Solid Waste from Landfill Passive Zone to Treat Leachate Through A Combination of Leachate Recirculation and Bulking Agent

Využití pevného odpadu z pasivní zóny skládky do upraveného výluhu kombinací recirkulace výluhu a objemového činidla

Wiharyanto OKTIAWAN, Ika Bagus PRIYAMBADA, Purwono PURWONO

45

Posúdenie možnosti valorizácie kávového oleja prítomného v kávovom odpade na produkciu bionafty

Assessment of the extracted coffee oil valorisation to biodiesel

Valentína KAFKOVÁ, Petra ONDREJÍČKOVÁ

Komerční prezentace / Commercial presentation

Týden výzkumu a inovací pro praxi a životní prostředí TVIP 2022 – 1. cirkulář

57

Research and Innovation Week for Practice and the Environment TVIP 2022 – Call for papers