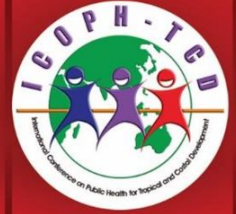




MINISTRY OF EDUCATION, CULTURE, RESEARCH, AND TECHNOLOGY
UNIVERSITAS DIPONEGORO
FACULTY OF PUBLIC HEALTH



CERTIFICATE OF APPRECIATION

Number : 11/UN7.A/HK/VII/2022

This Certificate is proudly present to

Dina Rahayuning Pangestuti

as **Participant**

The 4th International Conference
on Public Health-Tropical and Coastal Development (ICOPH-TCD 2022)
“Strengthening Health Resilience In Public Health System
After Peak Of Covid-19 Pandemic”.

August 30th-31st, 2022
Semarang, Indonesia



Prof. Dr. Yos Johan Utama, S.H., M.Hum.
Rector

Dr. Budiyo, S.KM, M.Kes
Dean

SKP IAKMI No SK: 719/IAKMIPUSAT/SKP-VII/2022 Peserta : 3 SKP Peserta Oral : 5 SKP Pembicara : 5 SKP Moderator : 3 SKP Panitia : 3 SKP

SKP PERSAKMI No SK: 48/KEP/PP-PERSAKMI/CV/2022 Peserta : 6 SKP Pembicara : 6 SKP Moderator : 6 SKP Panitia : 6 SKP

The Coronavirus Disease-2019 (COVID-19) pandemic has spread all over the world since the end of 2019. In Indonesia, COVID-19 cases fluctuated, until July-August 2021 the positive rate in Indonesia was very high, reaching thousands of cases every day with a significantly increased mortality rate. Although the peak of the second wave of COVID-19 cases in Indonesia has been exceeded, this leaves various problems in the future.

The threat of the emergence of a third wave, the adaptation of new habits of society, and the risk of a double burden due to non-communicable diseases that are increasing from time to time make it important to strengthen the resilience of the health system in Indonesia.

The Faculty of Public Health, University of Diponegoro (FKM UNDIP) raised the theme in the International Conference on Public Health-Tropical and Coastal Development (ICOPH-TCD) in 2022 with the topic “**Strengthening Health Resilience In Public Health System After Peak Of Covid-19 Pandemic**”. ICOPH-TCD is an international conference regularly held by FKM UNDIP since 2016. Collaboration of various speakers from various countries, as well as presenters who presented papers related to public health in the realm of Biostatistics and Population, Health Promotion, Occupational Health and Safety, Reproductive Health, Epidemiology, and Tropical Diseases, Community Nutrition, Environmental Health, and Health Administration and Policy. It is hoped that in providing insight into problems and strengthening the resilience of the public health system after the peak of the COVID-19 pandemic in Indonesia.

In addition, the international conference held is also expected to be able to open opportunities for collaboration between Diponegoro University in general and the Faculty of Public Health, Diponegoro University in particular in the fields of research, visiting lectures, student exchanges, with various health and educational institutions in various countries.

In its implementation, a call for paper is also held which aims as a forum for the dissemination of research on public health and to increase the number of quality publications in international proceedings.

SPEAKERS



Budi Gunadi Sadikin, CHFC, CLU (Minister of Health, Indonesia)- Keynote Speaker (*under confirmation) – “*Best Practice to Overcome COVID-19 pandemic in Indonesia*”



Prof. Amanda Lee (University Queensland – Australia) – “***Nutrition Resilience During Covid-19 Pandemic***”



Prof. Kun-Hsien Tsai (National Taiwan University – Taiwan) – “ ***Vector-Borne Disease during COVID-19 Pandemic***”



Prof. John Parrish-Sprowl, Ph.D (Indiana University Purdue University – USA) – “***How to Manage COVID-19 Infodemic?***”



Prof. Darryl Macer (American University of Sovereign Nations /AUSN – USA) – “ ***Ethics and Justices in COVID-19 Vaccination***”



Assoc. Prof. Dr. Rafdzah Ahmad Zaki (University of Malaya, Malaysia) – “***Covid-19 Situation and Its Controll in the World***”

Assoc. Prof. Dr. Budiyo, BSPH, MPH (Dean of Faculty of Public Health, Universitas Diponegoro, Indonesia – “***Opening Session***”



Assoc. Prof. Hanifa Maher Denny, BSPH, MPH, PhD
(Universitas Diponegoro, Indonesia) – ***“Work-life
Balance during COVID-19 Pandemic”***



Assist. Prof. Mohammad S. Jalali, PhD (Harvard University, USA) –
“Simulation Modelling of Data Science in Public Health”



Assist. Prof. Dr. Khadizah H. Abdul Mumin (University of Brunei
Darussalam, Brunei Darussalam) – ***“ Strengthening Maternal and Child
Health Resilience in New Normal Era”***

TOPIC :

**“STRENGTHENING HEALTH RESILIENCE IN
PUBLIC HEALTH SYSTEM AFTER PEAK OF
COVID-19 PANDEMIC”**



Scientific Committee

Scientific Committee ICOPH-TCD 2022

Scientific Committee	Scopus
Prof. Andrew J Macnab The University of British Columbia, Vancouver, Canada	Scopus ID: 24379629000 <i>h-index 28</i>
Dr. Dian Kusuma, SKM, MPH, ScD Imperial College London, London, United Kingdom	Scopus ID: 57190047530 ORCID ID: 0000-0002-1909-9341 <i>h-index 14</i>
Prof. Juliana Jalaludin, Universiti Putra Malaysia, Malaysia	ID scopus: 16316064900 ORCID ID: 0000-0002-7910-6945 <i>h-index: 12</i>
Prof. Agus Suwandono, MPH, Dr. PH, Universitas Diponegoro, Indonesia	ID scopus: 14029296800 <i>h-index: 9</i>
Dr. Agung Dwi Laksono, SKM., M.Kes, National Research and Innovation Agency, Jakarta, Indonesia	ID scopus: 56429657100 ORCID ID: 0000-0002-7910-6945 <i>h-index: 8</i>
Trias Mahmudiono, SKM, MPH, GCAS, PhD, Universitas Airlangga, Indonesia	ID scopus: 57189899256 ORCID ID: 0000-0002-3128-2173 <i>h-index: 6</i>
Dr. Ratna Dwi Wulandari, S.KM., M.Kes, Universitas Airlangga, Indonesia	ID scopus: 57211333571 ORCID ID: 0000-0003-4365-5747 <i>h-index: 6</i>

Assist. Prof. Dr. Khadizah H.Abdul Mumin, University of Brunei Darussalam, Brunei Darussalam	ID scopus: 56720402400 ORCID ID: 0000-0003-3474-5089 <i>h-index: 5</i>
Assoc. Prof. Dr. dr. Bagoes Widjanarko, MPH Universitas Diponegoro, Indonesia	ID scopus: 55903259200 <i>h-index: 4</i>
Assoc. Prof. Ts Dr. Ismaniza Ismail, Universiti Teknologi MARA, Malaysia	ID scopus: 57203013485 <i>h-index: 3</i>
Assoc. Prof. Dr. Ir. Martini, M. Kes, Universitas Diponegoro, Indonesia	ID scopus: 57191227933 ORCID ID: 0000-0002-6773-1727 <i>h-index: 3</i>
Assoc. Prof. dr. Martha Irene Kartasurya, M.Sc, PhD Universitas Diponegoro, Indonesia	ID scopus: 36339908600 ORCID ID: 0000-0002-5177-233X <i>h-index: 3</i>
Assoc. Prof. Dr. Nurjazuli, SKM, M. Kes Universitas Diponegoro, Indonesia	ID scopus: 57193741459 ORCID ID: 0000-0002-0459-4999 <i>h-index: 3</i>
Assoc. Prof. Vitri Widyaningsih, dr, MS, PhD Universitas Sebelas Maret, Indonesia	ID scopus: 57193676707 <i>h-index: 2</i>
Assoc. Prof. Dr. Yuliani, SKM, M. Kes Universitas Diponegoro, Indonesia	ID scopus: 57196058453 <i>h-index: 2</i>

Latest News

Published Articles of ICOPH-TCD 2022 in BIO Web of Conferences

Third Announcement : Extended Submission Deadline until 10th August 2022

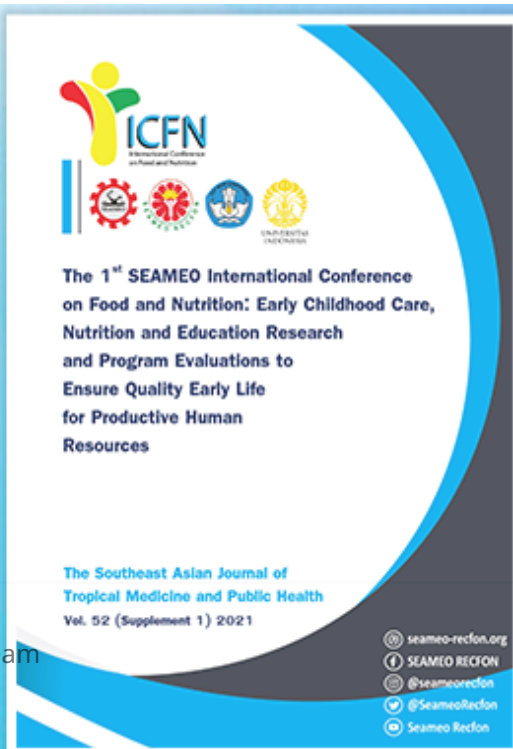
Second Announcement : Extended Deadline



SEATROPH

The Southeast Asian Journal of
Tropical Medicine and Public Health

[About](#)
[Announcements](#)
[Current](#)
[Archives](#)
[Journal Policies](#)
[Submit a Manuscript](#)
[Contact](#)

[Search](#)


The Southeast of Tropical Med Volume 52 (Suppleme

[Home](#) / [Editorial Team](#)

Editorial Team

Editorial Panel

Position	Name	Affiliation
Journal Editor	Waranya Wongwit	TROPMED CENTRAL OFFICE, Thailand
Associate Editor	Irwin F Chavez	Mahidol University, Thailand

Section Editor	Ma Sandra B Tempongko	TROPMED CENTRAL OFFICE, Thailand
Executive Consultant	Pratap Singhasivanon	TROPMED CENTRAL OFFICE, Thailand
Editorial Board	Noor Rain Abdullah	Institute for Medical Research, Malaysia
	Kevin Baird	Eijkman Oxford Clinical Research Unit, Indonesia
	Shigeyuki Kano	National Center for Global Health and Medicine, Japan
	Kevin Baird	Eijkman Oxford Clinical Research Unit, Indonesia
	Vicente Belizario, Jr	University of the Philippines Manila, Philippines
	Virasakdi Chongsuvivatwong	Prince of Songkhla University, Thailand
	Nicholas PJ Day	University of Oxford, United Kingdom
	Shigeyuki Kano	National Center for Global Health and Medicine, Japan
	Srivicha Krudsood	Mahidol University, Thailand
	Saovanee Leelayoova	Phramongkutklao College of Medicine, Thailand
	Mathirut Mungthin	Phramongkutklao College of Medicine, Thailand
	Yong Poovorawan	Chulalongkorn University, Thailand
	Parntep Ratanakorn	HRH Princess Chulabhorn College of Medical Science, Thailand

	Kabkaew Sukontason	Chiang Mai University, Thailand
	Suvanee Supavej	Mahidol University, Thailand
	Nick Walters	USA
	Prapon Wilairat	Mahidol University, Thailand
	Ahmad Faudzi Yusoff	Institute for Medical Research, Malaysia

Journal Manager	Prakit Kitsupree	Mahidol University, Thailand
Publication Staff	Jiraporn Kongthong	TROPMED CENTRAL OFFICE, Thailand

Editorial Board

Mark Robson (USA), Mediadora SanieI (Philippines), Nicholas J White (UK), Nick Walters (USA), Pornthep Chanthavanich (Thailand), Prapon Wilairat (Thailand), Srivicha Krudsood (Thailand), Stephen L Hoffman (USA), Shigeyuki Kano (Japan), Virasakdi Chongsuvivatwong (Thailand), Yong Poovorawan (Thailand)

Advisory Board

Caridad A Ancheta (Philippines), Lye Munn Sann (Malaysia), Louis H Miller (USA), M Jegathesan (Malaysia), Santasiri Sornmani (Thailand), Somei Kojima (Japan), Nina Gloriani (Philippines), Fadzilah Bt Kamaludin (Malaysia), Romeo R Quizon (Philippines), Pratap Singhasivanon (Thailand)

TROPMED GOVERNING BOARD MEMBERS

BRUNEI	Dr HAJAH RAFIDAH BINTI HAJI GHARIFF
CAMBODIA	HE Dr OR VANDINE
INDONESIA	Prof Dr TJANDRA YOGA ADITAMA
LAO PDR	Dr SENGCHANH KOUNNAVONG
MALAYSIA	Datuk Dr NOOR HISHAM ABDULLAH
MYANMAR	Prof Dr MOE MOE SAN
PHILIPPINES	Dr JAIME C MONTOYA
SINGAPORE	Prof TEO YIK YING
THAILAND	Dr SUWANNACHAI WATTANAYINGCHAROENCHAI
TIMOR LESTE	Dr JOAO MARTINS
VIETNAM	Dr TRAN THI GIANG HUONG



SEATROPH

The Southeast Asian Journal of
Tropical Medicine and Public Health

[About](#)

[Announcements](#)

[Current](#)

[Archives](#)

[Journal Policies](#)

[Submit a Manuscript](#)

[Contact](#)

[Search](#)



The 1st SEAMEO International Conference
on Food and Nutrition: Early Childhood Care,
Nutrition and Education Research
and Program Evaluations to
Ensure Quality Early Life
for Productive Human
Resources

The Southeast Asian Journal of
Tropical Medicine and Public Health
Vol. 52 (Supplement 1) 2021



The Southeast of Tropical Med

Volume 52 (Suppleme

[Home](#) / [Archives](#) /

[Vol. 53 No. Suppl 2 \(2022\): THE SOUTHEAST ASIAN JOURNAL OF TROPICAL MEDICINE AND PUBLIC HEALTH](#)

Vol. 53 No. Suppl 2 (2022): THE SOUTHEAST ASIAN JOURNAL OF TROPICAL MEDICINE AND PUBLIC HEALTH



ICPH-TCO 2022

STRENGTHENING HEALTH RESILIENCE
IN PUBLIC HEALTH SYSTEM
AFTER PEAK OF COVID-19 PANDEMIC

30 - 31 August 2022

Executive Guest Editors
Bagas Wijanarko
Martha Irene Kartasurya

The Southeast Asian Journal of
Tropical Medicine and Public Health
Vol. 53 (Supplement 2) 2022

"Strengthening Health Resilience in Public Health System after Peak of Covid-19 Pandemic"

30 - 31 August 2022 Executive Guest Editors

Bagoes Widjanarko

Martha Irene Kartasurya

Published: 2022-12-29

Articles

ASSOCIATION BETWEEN PSYCHOLOGICAL STRESS AND BODY MASS INDEX OF NUTRITION DEPARTMENT STUDENTS IN SURABAYA

Trias Mahmudiono

714-725

 Full Text

ASSOCIATION BETWEEN PSYCHOLOGICAL STRESS AND BODY MASS INDEX OF NUTRITION DEPARTMENT STUDENTS IN SURABAYA

Trias Mahmudiono

714-725

 Full Text

SURVEY ON LEPTOSPIRA SPP INFECTION IN RAT SPECIES IN INDONESIA

Ristiyanto

695-713

 Full Text

MOVING AVERAGE AS A SIMPLE INDICATOR TO PREVISE THE TREND OF PANDEMIC CASES TO EVALUATE CONTROL INTERVENTION: STUDY FROM -ONE-YEAR COVID-19 IN INDONESIA

Dicky Andiarasa

680-694

 [Full Text](#)

EVALUATION OF THE UTILIZATION OF ELECTRONIC-BASED RECORDING AND REPORTING SYSTEMS AT PUBLIC HEALTH CENTERS (PUSKESMAS)

Farid Agushybana

660-679

 [Full Text](#)

OVERVIEW OF DIABETES MELLITUS AND ITS RISK FACTORS IN INDONESIA: AN ANALYSIS OF BASIC HEALTH RESEARCH DATA

Mugi Wahidin^{1,2,3}, Anhari Achadi⁴, Nikson Sitorus² and Rini Handayani³

Mugi Wahidin

642-659

 [Full Text](#)

NUTRITIONAL STATUS OF ADOLESCENT MOTHERS AND FACTORS RELATED TO BIRTH OUTCOMES: ANALYSIS OF CHILD GROWTH AND DEVELOPMENT COHORT DATA 2012-2018

Salimar

613-629

 [Full Text](#)

EFFECT OF NUTRITIONAL STATUS AND PROTEIN INTAKE ON LEVELS OF SERUM ALBUMIN IN PREGNANT WOMEN IN SELUMA DISTRICT

Rostika Flora¹, Mohammad Zulkarnain², Hamzah Hasyim³, Nurmalia Ermi⁴, Annisah Biancika Jasmine⁵, Risnawati Tanjung⁶, Sri Martini⁷, Aguscik⁷, Ikhsan⁸, Nurlaili⁸, Samwilson Slamet⁸, Yetti Purnama⁸ and Neshy Sulung⁸

Rostika Flora

630-641

 [Full Text](#)

EFFECTIVENESS OF PESTICIDE STORAGE AND RINSE HOUSE IN REDUCING FARMERS' PESTICIDE CONTAMINATION

Eka Rosanti

1-13

 FullText

ANTIBIOTIC RESISTANCE IN HOSPITALS IN INDONESIA: ANTIBIOTIC USE AND ASSOCIATED COSTS

Selma SiaHaan

14-28

 FullText

HEALTH RISK BEHAVIORS AND LIFE SKILLS OF INDONESIAN CHILDREN: A QUALITATIVE ANALYSIS USING SOCIAL COGNITIVE THEORY

Ratih Indraswari

29-51

 Full Text

SOCIODEMOGRAPHIC AND LIFESTYLE-RELATED RISK FACTORS FOR TYPE 2 DIABETES MELLITUS: TARGETED TO PREVENTION

Fazidah Aguslina Siregar

53-64

 FullText

CLIMATIC FACTORS AND CHILDHOOD DIARRHEA IN SOUTH KALIMANTAN IN 2017-2020

Ika Dharmayanti

65-80

 Full Text

KNOWLEDGE, ATTITUDE, AND PRACTICES TOWARDS COVID-19 AMONG ADULTS IN INDONESIA DURING THE EARLY PANDEMIC: A RAPID ONLINE SURVEY

Endang Puji Astuti
81-104

 [Full Text](#)

GAPS IN COMPETENCE OF INTEGRATED SERVICE POST CADRES AND HEALTH WORKERS IN MEASURING BODY LENGTH AND STUNTING STATUS OF CHILDREN UNDER TWO YEARS OLD IN CENTRAL JAVA, INDONESIA

Suyatno
105-118

 [Full Text](#)

BLOOD SUPPLY ANALYSIS DURING PANDEMIC IN INDONESIAN RED CROSS OF SEMARANG CITY

Jessica Christanti
119-134

 [Full Text](#)

FACTORS INFLUENCING WOMEN WITH DISABILITY TO ACCESS BREAST AND CERVICAL CANCER SCREENING: A SCOPING REVIEW

Eighty Mardiyani Kurniawati
135-154

 [Full Text](#)

DISABILITY OF PATIENTS WITH LEPROSY IN TEGAL REGENCY (INDONESIA) AND ITS ASSOCIATION WITH HEALTH-SEEKING BEHAVIOR

Yudhy Dharmawan
155-167

 [Full Text](#)

IMPROVING REPRODUCTIVE HEALTH KNOWLEDGE AND BEHAVIOR OF ADOLESCENTS WITH HEARING LOSS

Yuly Sulistyorini
168-182

 [Full Text](#)

RISK OF TUBERCULOSIS IN CHILDBEARING-AGE WOMEN WITH DIABETIC MELLITUS AND MALNUTRITION IN EASTERN INDONESIA BASED ON THE 2018 NATIONAL BASIC HEALTH SURVEY

Ina Kusriani
183-198

 [Full Text](#)

DESIGNING A FAMILY-BASED INTERVENTION TO IMPROVE CHILD DEVELOPMENT IN WONOSOBO REGENCY

Marizka Khairunnisa
199-215

 [Full Text](#)

VARIATION OF RAT SPECIES AND IDENTIFICATION OF LEPTOSPIROSIS IN SEVERAL TYPES OF ECOSYSTEMS IN SOUTHEAST SULAWESI PROVINCE

Anis Nur Widayati
216-232

 [Full Text](#)

FACTOR RELATED TO DEPRESSION AMONG ELDERLY IN URBAN RURAL AREAS IN INDONESIA

Rukmini
233-253

 [Full Text](#)

PREGNANT WOMEN'S PREFERENCE FOR ANTENATAL CARE (ANC) PROVIDER: LESSONS LEARNED TO SUPPORT MATERNAL MORTALITY RATE REDUCTION STRATEGIES

Astridya Paramita
254-272

 [Full Text](#)

READINESS OF SUB-DISTRICTS IN PALU CITY, CENTRAL SULAWESI PROVINCE, INDONESIA, TO FACE THE COVID-19 PANDEMIC

Anis Nur Widayati
273-291

 [Full Text](#)

COMPARISON OF THE WHO STANDARD AND THE CDC BOTTLE BIOASSAY TESTING METHODS FOR ASSESSING THE DENGUE VECTORS' SUSCEPTIBILITY TO INSECTICIDES IN SEMARANG, INDONESIA

Muhammad Choirul Hidajat
292-310

 [Full Text](#)

IMPLEMENTATION OF INFECTION CONTROL AND PREVENTION IN DENTAL PRACTICE IN PALEMBANG DURING THE COVID-19 PANDEMIC

Rizma Adlia Syakurah
311-327

 [Full Text](#)

LOW BIRTH WEIGHT AMONG SINGLE MOTHERS IN INDONESIA: WHAT'S THE MATTER?

Mara Ipa
328-347

 [Full Text](#)

LIFE CYCLE OF AEDES AEGYPTI BASED ON ACIDITY VARIATION OF DOMESTIC SEWAGE WATER

I Gede Dedy Suwartawan

348-365

 [Full Text](#)

CAREGIVER FEEDING STYLE IN MAGELANG AND WONOSOBO DISTRICTS

Diah Yunitawati¹, Leny Latifah¹, Nur Ihsan² and Marizka Khairunnisa¹

Diah Yunitawati

366-381

 [Full Text](#)

DISCONTINUITY OF THE MATERNAL AND CHILD CASCADE OF CARE: EVIDENCE FROM INDONESIAN DEMOGRAPHIC AND HEALTH SURVEY

Vitri Widyaningsih^{1,2}, Tri Mulyaningsih³, Septyan D Nugroho^{1,4}, Nurussyifa A Zaen^{1,4}, Akhmad Azmiardi^{5,6} and Ari Probandari^{1,2}

Vitri Widyaningsih

382-403

 [Full Text](#)

DETERMINANT FACTORS OF THE IMPROVEMENT OF NUTRITIONAL STATUS (BASED ON HEIGHT-FOR-AGE INDEX CATEGORY) IN CHILDREN DURING THE COVID-19 PANDEMIC: A COHORT STUDY OF CHILDREN'S GROWTH AND DEVELOPMENT IN BOGOR

Budi Setyawati

404-422

 [Full Text](#)

EARLY DETECTION OF STUNTING AND USER SATISFACTION: AN OVERVIEW OF ANTHROPOMETRIC MEASUREMENT IN INDONESIAN TODDLERS

Alinea Dwi Elisanti

423-446

 [Full Text](#)

DETERMINANTS OF EXCLUSIVE BREASTFEEDING IN INDONESIA: EVIDENCE FROM THE 2017 INDONESIAN DEMOGRAPHIC HEALTH SURVEY (IDHS)

Trias Mahmudiono

447-463

 [Full Text](#)

CHANGES IN SUGAR, SALT, AND FAT CONSUMPTION PATTERNS THROUGH ONLINE NUTRITION EDUCATION

Dina Rahayuning Pangestuti

464-476

 [Full Text](#)

KNOWLEDGE OF KEY PLAYERS ON VECTOR CONTROL AT INDONESIA'S COMMUNITY HEALTH CENTERS: A QUALITATIVE STUDY IN MALARIA ELIMINATION PHASE AREAS

Mutiara Widawati

477-493

 [Full Text](#)

IDENTIFICATION OF ELECTRONIC WASTE AND POTENTIAL HEALTH PROBLEMS TO ELECTRONIC WASTE COLLECTORS IN PAMULANG DISTRICT, SOUTH TANGERANG CITY, INDONESIA

Budiyono Budiyono

494-507

 [Full Text](#)

PREVALENCE OF TUBERCULOSIS AND DIABETES MELLITUS COMORBIDITIES IN JEMBER: AN ECOLOGICAL ANALYSIS

Hanin Dhany Robby

508-522

 [Full Text](#)

MENTAL HEALTH OF HEALTH WORKERS DURING COVID-19 PANDEMIC: WHAT KIND OF SYSTEM SUPPORT THEY NEED?

Faizatul Ummah
524-536

 [Full Text](#)

INFLUENCING FACTORS OF CHILDBEARING-AGE COUPLES IN CONTRACEPTIVE USES

Mujahidatul Musfiroh
537-555

 [Full Text](#)

MATERNAL AND CHILDHOOD MORTALITY, LIFE EXPECTANCY AT BIRTH: RESULT FROM IMPLEMENTATION OF THE CIVIL REGISTRATION AND VITAL STATISTICS SYSTEM IN DISTRICT OF NORTH BOLAANG MONGONDOW, INDONESIA, 2021

Tin Afifah
556-576

 [Full Text](#)

EXPLORING FACTORS CONTRIBUTING TO THE SLOW COVID-19 VACCINE ROLLOUT IN PANDEGLANG DISTRICT, INDONESIA: A QUALITATIVE STUDY

Diyan Ermawan Effendi
577-594

 [Full Text](#)

ANALYSIS OF EXTERNAL RISK FACTORS AND CHOLINESTERASE ENZYME LEVELS IN FEMALE FARMERS IN BREBES REGENCY

Sri Winarni
595-612

CHANGES IN SUGAR, SALT, AND FAT CONSUMPTION PATTERNS THROUGH ONLINE NUTRITION EDUCATION

Dina Rahayuning Pangestuti¹, Trias Mahmudiono², Rahayu Indriasari³,
Naintina Lisnawati¹ and Alfi Fairuz Asna¹

9

¹Department of Public Health Nutrition, Faculty of Public Health, Universitas Diponegoro, Semarang, Indonesia; ²Department of Nutrition, Faculty of Public Health, Universitas Airlangga, Surabaya, Indonesia; ³Department of Nutrition, Faculty of Health Hasanudin University, Makassar, Indonesia

Abstract. Online media are potentially useful teaching resources, especially for students studying from home during the coronavirus disease (COVID-19) pandemic. Previous research found that this method can improve understanding of the material other than the face-to-face method. This study evaluated whether online nutrition education could influence the sugar, salt, and fat diet of elementary school students. Semarang City served as the site of this experimental study. Participants in this study were given a weekly online nutrition education intervention for eight weeks. Based on the inclusion and exclusion criteria, 100 students were randomly selected and divided into two groups, so that 45 students remained until the end of the study in the control group, while the intervention group had 39 students. Data on general characteristics, self-reported anthropometry, sugar, salt, and fat eating patterns, and variables influencing social media use, were gathered. The data were analyzed through descriptive, bivariate, and multivariate analyses. In this study, students used YouTube more often (83.7%) than other social media platforms. The intervention caused a shift in the students' dietary patterns. The scores of fried food consumption in both groups and sugary food consumption in the control group varied before and after the interventions. There was no difference in the delta scores between the intervention and control groups; however, it was 4.1 times harder for female students¹⁰ than for male students to change their eating habits. Even though there was no significant difference between the two groups, online nutrition education could alter high-sugar and high-fat diets.

Keywords: sugar-salt-fat intake, eating pattern, online, nutrition education, students



ANTIBIOTIC RESISTANCE IN HOSPITALS IN INDONESIA: ANTIBIOTIC USE AND ASSOCIATED COSTS

Selma Siahaan^{1,2}, Pramita Andarwati³, Nelly Puspandari⁴, Lusi Kristiana⁵
and Betty Roosiehermatie¹

¹Research Center for Public Health and Nutrition, National Research and Innovation Agency, Bogor, Indonesia; ²Faculty of Pharmacy, University of 17 Agustus 1945, Jakarta, Indonesia; ³Research Center for Pre-Clinical and Clinical Medicine, National Research and Innovation Agency, Republic of Indonesia, Bogor, Indonesia; ⁴Agency for Health Policies Development, Ministry of Health, Jakarta, Indonesia; ⁵Research Center Pharmaceutical Ingredients and Traditional Medicine, National Research and Innovation Agency, Bogor, Indonesia

Abstract. Antimicrobial resistance (AMR) reveals a serious, worldwide threat to public health. One of the causes is inappropriate antibiotic (AB) therapy in health services. It leads to patients' difficulty healing, needs longer times, and other higher lines of antibiotics lead to higher treatment costs. This study aimed to describe the situation of antibiotic resistance (ABR) in hospitals related to antibiotic use and its costs. Research was conducted in 2018. Sample locations were in 10 public hospitals in 10 provinces. Hospitals selected must fulfill the following criteria: having a microbiology laboratory; running AMR Control Program; clinical pharmacy services running well; financial hospital being computerized. Medical and cost data from patients who suffered from pneumonia and septicemia in 2017 were collected retrospectively. Data calculated were the costs of administration, patient's room, professional visit, diagnostic test, medicines, and other treatments and were analyzed descriptively. Total samples were 3164 cases: 1686 pneumonia and 1478 septicemia. The most used AB in pneumonia and septicemia was cephalosporin, followed by fluoroquinolone. The results of sensitivity tests for pneumonia and septicemia cases were 14.9% and 9.6%, respectively. There were >90% of patients hospitalized for more than 30 days compared to <10% without ABR. Result also shows that costs of pneumonia and septicemia hospitalization were 149.0% and 262.3% higher if the patients were resistant to antibiotics. The sensitivity test results for pneumonia and septicemia showed more resistance than in sensitive cases. This study has demonstrated that antibiotic resistance leads to longer hospital stays and greatly increased hospital costs.

Keywords: antibiotic resistance in hospital, AMR, hospitals in Indonesia, hospital cost

ANTIBIOTIC USE AND ASSOCIATED COSTS IN INDONESIA

Correspondence: Selma Siahaan, Organization Research for Health – BRIN Indonesia, Cibinong Science Centre, Bogor, Jawa Barat 16915, Indonesia
Tel: +62 81384427228 E-mail: selmasiahaan@yahoo.com

INTRODUCTION

The Global Antimicrobial Resistance and Use Surveillance System report has indicated high levels of antibiotic resistance in Indonesia (Siahaan et al., 2021).