

C18

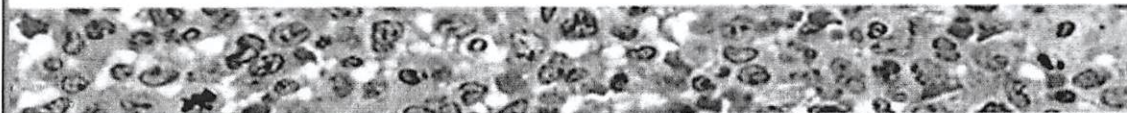
The Indonesian Society of Haematology and Blood Transfusion
and
Asia-Pacific Blood and Marrow Transplantation Group

B10



DOING OUR PART TO SAVE HUMAN LIVES

THE ASIA-PACIFIC COLLOQUIUM ON HAEMATOLOGY



TANDEM SCIENTIFIC SESSIONS OF PHTDI AND APBMT

J.W. MARRIOTT HOTEL - MEDAN

WORKSHOP 4 September 2015

SYMPOSIA 5-6 September 2015

Welcome Message

President, PHTDI (The Indonesian Society of Hematology and Blood Transfusion)

Dear Colleagues

Welcome to Indonesia and to the Asia Pacific Colloquium on Hematology: A Tandem Scientific Meeting of the Indonesian Society of Hematology and Blood Transfusion (INASHBT) / Perhimpunan Hematologi dan Transfusi Darah Indonesia (PHTDI) and the Asia Pacific Bone Marrow Transplantation (APBMT) Group.

It is such an honour for the INASHBT to host this tandem meeting. A tandem or joint meeting is a special scientific meeting in the new concept that two institutions are making a progress towards one unity. In many other parts of the world this joint meeting happens quite often. However, for the INASHBT this is the first time to hold a joint meeting with APBMT Group. In the past time, the INASHBT has had several times to be a host of the international scientific meetings, such as with the International Society of Blood Transfusion (ISBT), with the Thalassemia International Federation (TIF), with the Asia Pacific Iron Academy (APIA).

This year the Annual Scientific Meeting of the INASHBT on hematology and hemostasis thrombosis will be held in Medan, North Sumatera, in September 2015. In conjunction with this annual meeting, the INASHBT will also collaborate with the APBMT Group to organize a joint meeting on bone marrow transplantation (BMT), with a hope that the both sides can gain knowledge and experiences reciprocally with regards to hematopoietic stem cell transplantations (HSCT), either in hematological malignancies or in other hematological non malignancy diseases.

There are currently 15 centers of hematology (going to be 17 centers) throughout Indonesia. However, only 3 centers has started with BMT in a period of 1987-1989 which included Semarang, Yogyakarta and Jakarta. Jakarta started conducting autologous and allogeneic BMT in acute leukemias and chronic myeloid leukemias, followed by peripheral blood stem cell transplantation (PBSCT) started in 1997. However, due to monetary crisis in 1998 as well as the old facilities for BMT, there has been a period of no activities of BMT until the renovation of the facilities, the building of hematopoietic stem cell blood banking and processing (cGMP)

**MOLECULAR ASPECT CORRELATION BETWEEN C-REACTIVE
PROTEIN (CRP) AND CONTENT HEMOGLOBIN RETICULOCYTE(CHR)
IN CHRONIC KIDNEY DISEASE (CKD) HEMODIALYSIS PATIENTS**

Indranila KS, Hastim N

Departement Clinical Pathology Medical Faculty University Of Diponegoro
Semarang

End-stage Chronic Kidney Disease (CKD) undergo hemodialysis, typically had chronic inflammation that occurs due to multifactorial, which lead to functional iron deficiency . Functional iron deficiency in CKD change the imbalance between the need iron for erythropoiesis and iron release from Reticulo endothelial system (RES). C-reactive protein (CRP) is a marker of inflammation occur are still to be determined. Hemoglobin reticulocyte content (CHr) are parameter that describe the availability of iron status on this relationship, reflect how much iron in the bone marrow for the formation of erythrocyte 3-4 days earlier. The aim of this study is to examine the relation between C-reactive protein and Content Hemoglobin reticulocyte in Chronic Kidney Disease undergo hemodialysis. Observational study with cross sectional approach in 31 patients with CKD undergo hemodialysis, in dr. Kariadi hospital. Laboratory assays performed on blood samples for, CRP, and CHr. CRP was determined quantitatively by immunoturbidimetry, and CHr was checked by flowcytometri. The relationship between variables were analyzed with the Spearman rank test. Median serum CRP was 2,15 mg/dL and CHr median was 29,5 pg. Spearman correlation test results between CRP with CHr was P,0,05. There is a relationship between CRP and CHr in CKD patients undergo hemodialysis.



The Indonesian Society of Haematology and Blood Transfusion



Asia Pacific Blood and Marrow Transplantation Group

Certificate of Attendance

This is to certify that

Dr. dr. Indranila, Sp.PK(K)

has participated as a

Speaker (Oral Presentation)

in

**The Asia-Pacific Colloquium on Haematology tandem scientific sessions of
PHTDI and APBMT**

Held in Medan, Indonesia, 5-6 September 2015

DR. dr. Djumhana Atmakusuma, SpPD-KHOM
National President of The Indonesian
Society of Haematology and Blood Transfusion

Prof. Shinichiro Okamoto, MD, Ph.D
President of Asia Pacific Blood and
Marrow Transplantation Group

Prof. dr. Herman Hariman, Ph.D (UK)
Chairman Organizing Committee

SK PB IDI No. 2024/PB/A.4/08/2015

(Participant 12 SKP, Speaker 14 SKP, Moderator 6 SKP, Organizing Committee 3 SKP)