

 ASP AMERICAN SCIENTIFIC PUBLISHERS	AMERICAN SCIENTIFIC PUBLISHER						
	Nanotechnology Chemistry Physics	Materials Science Polymer Science Biosciences	Engineering Computer Science Medicine				
Home	Journals	Books	Encyclopedias	New and Forthcoming Titles	Contact ASP	Search	A

[Aims and Scope](#)
[Editorial Board](#)
[Instructions for Authors](#)
[Contact Information](#)
[Subscription Information](#)
[Copyright Transfer Agreement](#)
[Indexed/Abstracted](#)
[Cover Library](#)
[Contents](#)

Advanced Science Letters

ISSN: 1936-6612 (Print): EISSN: 1936-7317 (Online)

Copyright © 2000-2022 American Scientific Publishers. All Rights Reserved.

EDITORIAL BOARD

EDITOR-IN-CHIEF

Professor Ahmad Umar

Department of Chemistry, College of Science and Arts
 Promising Centre for Sensors and Electronic Devices (PCSED)
 Najran University, P.O. Box: 1988, Najran 11001, Kingdom of Saudi Arabia
 Phone: +966-534-574-597
 Fax: +966-7-5442-135
 Email: advsci.asp@gmail.com

ASIAN EDITOR

Dr. Katsuhiko Ariga, PhD

Advanced Materials Laboratory
 National Institute for Materials Science
 1-1 Namiki, Tsukuba, Ibaraki 305-0044, JAPAN

ASSOCIATE EDITORS

Diederik Aerts (Quantum theory, Cognition, Evolution theory)
 Brussels Free University, Belgium.

Yakir Aharonov (Physics, Quantum Physics)
 School of Physics and Astronomy, Israel.

Peter C. Aichelburg (Gravitation)
 University of Vienna, Austria.

Jim Al-Khalili (Foundations of Physics, Nuclear Reaction Theory)
 University of Surrey, UK.

Jake Blanchard (Engineering Physics, Nuclear Engineering)
 University of Wisconsin–Madison, USA.

Simon Baron-Cohen (Cognitive Neuroscience)
 University of Cambridge, UK.

Franz X. Bogner (Cognitive Achievement)
 University of Bayreuth, Germany.

John Borneman (Anthropology)
 Princeton University, USA.

John Casti (Complexity Science)
 Internationales Institut für Angewandte Systemanalyse, Austria.

Masud Chaichian (High Energy Physics, String Theory)
 University of Helsinki, Finland.



Lihat halaman ini dalam bahasa: [Indonesia](#)

Terjemahkan

Matikan untuk: Inggris

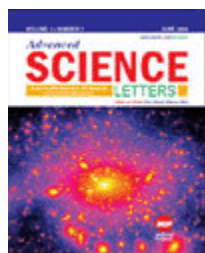
Opsi ▼

THIS PAGE IS SECURE

Advanced Science Letters

ISSN 1936-6612 (Print)

Ceased publication in 2019



ADVANCED SCIENCE LETTERS is an international peer-reviewed journal with a very wide-ranging coverage, consolidates research activities in all areas of (1) Physical Sciences, (2) Biological Sciences, (3) Mathematical Sciences, (4) Engineering, (5) Computer and Information Sciences, and (6) Geosciences to publish original short communications, full research papers and timely brief (mini) reviews with authors photo and biography encompassing the basic and applied research and current developments in educational aspects of these scientific areas.

Publisher: American Scientific Publishers

[More about this publication?](#)

Volume 23, Number 4, April 2017



Contents



Supplementary Data

research-article

S Selected Peer-Reviewed Articles from the 2016 International Conference on Social Sciences and Humanities (SOSHUM 2016), Kota Kinabalu, Sabah, Malaysia, 19–21 April 2016

pp. 2637-2638(2)

Authors: *Md. Saat, Mohd Shakir Bin; Sulaiman, Hamzah Asyrani Bin; Othman, Mohd Azlishah Bin; Hamid, Nurul' Atiqah Binti*

S Design Suggestions for Building Enclosures Towards Energy-Efficient Lit Office Environments

pp. 2639-2643(5)

Authors: *Jo, Han-Sol; Han, Seung-Hoon*

S Common European Framework of Reference Rating Scale: Scaling Its Functionality Through ESL Learners' Self- and Peer Assessments
pp. 2644-2647(4)
Authors: *Idris, Mardiana; Raof, Abdul Halim Abdul*

S Classification of Acute Luekemia Using HMLP Network Trained by Genetic Algorithm
pp. 2648-2652(5)
Authors: *Harun, Nor Hazlyna; Osman, Muhammad Khusairi; Mashor, Mohd Yusoff; Hassan, Roseline*

S Assessing Students' Performance: The Application of Operations Management Performance Spreadsheet (OMPS)
pp. 2653-2657(5)
Authors: *Kader, Mohd Aidil Riduan Awang; Mustapha, Musramaini; Muhamed, Mohd Faizal Azrul Azwan; Yunus, Nor Khairunnisa Mat; Zaki, Suhanom Mohd*

S Innovation Among Manufacturing Small and Medium Enterprises: A Cross-Industry Comparison
pp. 2658-2662(5)
Author: *Mamun, Abdullah Al*

S Comparative Study Between Flipped Learning and Flex Model in English as Second Language Classroom
pp. 2663-2666(4)
Authors: *Salleh, Farah Idayu Mohd; Baharum, Harmi Izzuan; Shamsudin, Sarimah*

S C Programming: Relevant Exercises for Engineering Students Using Bloom's Taxonomy
pp. 2667-2670(4)
Author: *Rahman, Teh Faradilla Binti Abdul*

S The Nexus of Capital Flows, Real Interest Rate and Stock Price Performance: Evidence from Malaysia
pp. 2671-2675(5)
Authors: *Li, You Hui; Hwa, Goh Han; Hong, Tan Su*

S Commercial Potential of University Patents Through Patent Cooperation Treaty Application
pp. 2676-2680(5)
Authors: *Petr, Zdrálek; Ruzena, Stemberkova; Pavla, Matulova; Petra, Maresova; Kamil, Kuca*

S Trend Changes on Socio-Spatial Configuration by the Heating System Conversion in Korea
pp. 2681-2685(5)
Authors: *Jo, Mu-Jin; Kim, Kyoung-Hee; Han, Seung-Hoon*

S An Importance-Performance Matrix Analysis (IPMA) on the Relationship Between Knowledge Creation Abilities and Innovative Work Behavior
pp. 2686-2690(5)
Authors: *Masrek, Mohamad Noorman; Noordin, Siti Arpah; Yusof, Nur Izzati; Sani, Mad Khir Johari Abdullah*

S ASEAN-China Trade Flow: A Study on Intra-Industry Trade in Manufacturing Sector
pp. 2691-2694(4)
Authors: *Tan, Day-Yin; Chin, Mui-Yin*

S Contemporary Video Arts in Malaysia: A New Framework
pp. 2695-2699(5)
Authors: *Sabran, Mohamad Fadly; Matrahah, Izzadin; Abdullah, Anwar Fikri; Ramli, Ishak*

S Understanding the Cultural and Religious Insights of Indonesia Through "Drupadi Pandawa Diva" the Masterpieces of F. Widayanto
pp. 2700-2703(4)
Author: *Wijaya, Hanny*

S Students' Interpretation and Commitment of Conservation Contents Based on School Context
pp. 2704-2708(5)
Authors: *Charlie, Elver Fazly; Taat, Muhammad Suhaimi; Saikim, Fiffy Hanisdah*

S Programming Tutoring Systems and Motivation Assessment Model
pp. 2709-2712(4)
Authors: *Thinakaran, Rajermani; Ali, Rosmah*

S Customer Attitudes Towards e-Money: A Qualitative Study of Consumers in Jakarta
pp. 2713-2717(5)
Authors: *Lasmy, .; Berasategui, Ruben Garcia; Chowanda, Andry; Herman, Robertus Tang*

S Quality of Life: Review on an Approach Integrating *Maqasid al-Shariah*
pp. 2718-2721(4)
Authors: *Rabe, Noor Suzilawati; Osman, Mariana Mohamed; Bachok, Syahriah; Abdullah, Alias*

S Assessing the Green Tourism Indicators: A Partial Least Squares Approach
pp. 2722-2726(5)
Authors: *Roly, Mohammad Rahmdzey; Siwar, Chamhuri; Ismail, Shaharuddin Mohamad; Salleh, Norlida Hanim Mohd*

S Innovation and Knowledge Management as the Catalyst of Small Medium Enterprise's Performance: A Conceptual Paper
pp. 2727-2730(4)
Authors: *Rahim, Ramita Abdul; Mahmood, Nik Hasnaa Nik; Masrom, Maslin*

S The Social Networking Services as Knowledge Sharing Tools
pp. 2731-2733(3)
Authors: *Kadir, Irwan Kamaruddin Abd; Mustapa, Fathiah Nabila Mohamad; Bunawan, Ap-Azli; Seman, Mohd Ridwan; Kadir, Mohd Razilan Abdul*

S Academic Writing in Science: Iraqi EFL Postgraduates' Difficulties in Writing Abstracts of Theses and Dissertations in Physical Disciplines
pp. 2734-2739(6)
Authors: *Ra'uf, Mayyada Mahdi; Foo, Thomas Chow Voon*

S On Measurement of Multidisciplinary Index in Engineering Education
pp. 2740-2743(4)

- S** Evaluation of Research and Development in Malaysia
pp. 2744-2747(4)
Authors: *Stemberková, Ruzena; Zdralek, Petr; Matulova, Pavla; Maresova, Petra; Kuca, Kamil*
-
- S** Policy of Sustainable Growth: Local People Perception on the Regional Economic Development of Iskandar in Malaysia
pp. 2748-2752(5)
Authors: *Rabe, Noor Suzilawati; Osman, Mariana Mohamed; Bachok, Syahriah*
-
- S** The Impact of Energy Consumption on Malaysia Gross Domestic Product
pp. 2753-2756(4)
Authors: *Hussin, Adibah; Kadir, Nor Aziah Abd; Zaini, Azniza Ahmad; Hamzah, Hamnah Che*
-
- S** The Physical Characteristics of an Islamic Garden: Studies of the Andalusian Gardens
pp. 2757-2760(4)
Authors: *Harun, Nor Zalina; Mansor, Mazlina; Zen, Ismawi; Jani, Haza Hanurhaza Md*
-
- S** Developing a Framework for Streetscape Design to Promote Walkability in Malaysian Campus
pp. 2761-2765(5)
Authors: *Harun, Nor Zalina; Nashar, Amanina*
-
- S** Exploratory Review on Understanding the Relationship Between Cultural Services and Open Space in University
pp. 2766-2769(4)
Authors: *Harun, Nor Zalina; Ibrahim, Putri Haryarti Binti; Rosli, Nur Diana Shafikha Bt*
-
- S** Does Neighborhood Green Infrastructure (NGI) Affect Residents' Self-Perceived Health?
pp. 2770-2773(4)
Authors: *Mansor, Mazlina; Zakariya, Khalilah; Harun, Nor Zalina*
-

S Relationship Between Relational Capability and Supply Chain Technology Adoption

pp. 2774-2778(5)

Authors: *Hassan, Mohamad Ghozali; Loon, Lee Khai; Udin, Zulkifli Mohamed*

S Effects of Concept Mapping in Laboratory Learning Activities to Generate Students' Higher Order Thinking Skills in Electrolysis

pp. 2779-2782(4)

Authors: *Ghani, Intan Baizura A.; Yahaya, Nor Affandi; Ibrahim, Nor Hasniza; Hasan, Mohd Noor; Surif, Johari*

S Islamic Attributes of Destination and Muslim Travellers' Satisfaction: Examining the Moderating Effect of Religious Commitment

pp. 2783-2786(4)

Authors: *Yaakop, Azizul Yadi; Ismail, Siti Aishah; Mahadi, Nomahaza; Anuar, Marhana Mohamed; Omar, Khatijah*

S Motivating Factors Contributing to Young Social Entrepreneurs' Intention to Start Social Activities

pp. 2787-2790(4)

Authors: *Pramila, Renne; Rizal, Adriana Mohd; Kamarudin, Suzilawati; Husin, Maizaitulaidawati Md*

S Family Firm Behavior and Resources, Exploration and Exploitation Strategies Toward Innovation in Family Business

pp. 2791-2794(4)

Authors: *Ibrahim, Norshamsiah; Rizal, Adriana Mohd; Husin, Maizaitulaidawati Md.; Kamarudin, Suzilawati*

S Mediating Roles of Attitude on Intention to Use M-Learning Among Students at Malaysian Technical Universities

pp. 2795-2798(4)

Authors: *Ibrahim, Mohamud Ahmed; Kim-Soon, Ng; Ahmad, Abd Rahman; Sirisa, Ng Mei Xin*

S Determinants of Taiwan Outward Foreign Direct Investment in ASEAN: Market, Regulative and Normative Factors

pp. 2799-2802(4)

Author: *Tiong, Kui Ming*

S Spatial Organization of Korean Traditional Residence Based on Domestic Religion Towards Succession to the Modernized Hanok
pp. 2803-2807(5)
Authors: *Park, Jong-Il; Han, Seung-Hoon*

S Incremental or Radical Product Innovation: Overview of Food and Beverage Sector Small and Medium-Size Enterprises in Malaysia
pp. 2808-2811(4)
Authors: *Abu, Noor Hidayah; Mansor, Mohd Fitri; Ibrahim, Amlus; Nasir, Hussien*

S Elaborating the Attributes of Local Ecological Knowledge: A Case Study of *Parak* and *Rimbo* Practices in Koto Malintang Village
pp. 2812-2817(6)
Authors: *Asmin, Ferdinal; Darusman, Dudung; Ichwandi, Iin; Suharjito, Didik*

S Contribution of Equine Education to the Equine Industry Development in Malaysia
pp. 2818-2820(3)
Authors: *Darmansah, Nur Fadilah; Misnan, Mohd Saidin; Sam, Abdul Rahman Mohd; Omar, Abdul Hafiz*

S A Dynamic Capabilities Perspective of Small and Medium-Sized Enterprises' Internationalization: A Conceptual Model
pp. 2821-2824(4)
Authors: *Ali, Hazem Ahmed Ragab; Selvachandran, Ganeshsree*

S Influential Dynamic Capabilities in Small and Medium Enterprises' Internationalization
pp. 2825-2828(4)
Authors: *Ali, Hazem Ahmed Ragab; Selvachandran, Ganeshsree*

S A Holistic Approach to Measure Organizational Readiness for Knowledge Management
pp. 2829-2832(4)
Authors: *Razi, Mohamed Jalaldeen Mohamed; Karim, Nor Shahriza Abdul; Dahlan, Abdul Rahman Ahmad; Ali, Noor Azian Mohamad*

S Clustering Alkire Foster-Oriented Quantification in Measuring Multidimensional Poverty Indicators by Using Intelligent Adaptive Neural Fuzzy Inference Systems

pp. 2833-2836(4)

Authors: *Zakaria, Noor Hidayah; Hassan, Rohayanti; Othman, Razib M; Asmuni, Hishammuddin*

S Public Librarians' Personal Integrity: Implications on Job Satisfaction

pp. 2837-2841(5)

Authors: *Sani, Mad Khir Johari Abdullah; Masrek, Mohamad Noorman; Endin, Mohd Zailan; Baba, Jamiah; Sahid, Noor Zaidi; Kamis, Yamin*

S Creating Industry Driven Sustainable Technical Graduates: A Case from Malaysia

pp. 2842-2845(4)

Authors: *Rajadurai, Jegatheesan; Sapuan, Noraina Mazuin; Daud, Salina; Abidin, Nurazariah*

S The Performance of SECI Model Implementation by Binus Students in the Environmental Awareness Socialization Final Project

pp. 2846-2848(3)

Authors: *Pane, Murty Magda; Rumeser, Johannes A. A; Sriyanto, Hari*

S Exploring Transparency, Trust and Social Media Towards Organization's Reputation Risks: A Conceptual Framework

pp. 2849-2852(4)

Authors: *Othman, Mohd Zailani; Isa, Salmi Mohd*

S MyHEALTH Portal: Malaysia National Web-Based Health Information Service for Public Well-Being

pp. 2853-2856(4)

Authors: *Tobi, Siti Noraini Mohd; Masrom, Maslin; Rahaman, Sharipah Alwiah Syed Abd; Mohammed, Azman*

S Healthcare Portals and the Usage Trends in Malaysia

pp. 2857-2860(4)

Authors: *Tobi, Siti Noraini Mohd; Masrom, Maslin; Rahaman, Sharipah Alwiah Syed Abd*

S An Assessment of the Physical Factors That Influence Reading Habit Among Adult Group in Suburban Area of Kuala Lumpur, Malaysia
pp. 2861-2864(4)
Authors: *Sulaiman, Nurul Syafinaz; Ibrahim, Mansor; Hasyim, Khairusy Syakirin Has Yun; Jasmani, Ismail; Saad, Rahimi*

S Creating Brand Evangelists Through Service Recovery: Evidence from the Restaurant Industry
pp. 2865-2867(3)
Authors: *Rashid, Muhammad Hafiz Abd; Ahmad, Fauziah Sh; Hasanordin, Rahayu*

S Information System Key Success Factors and Student Behavioral Intention to Use M-Learning
pp. 2868-2871(4)
Authors: *Ibrahim, Mohamud Ahmed; Kim-Soon, Ng; Razzaly, Wahid; Ahmad, Abd Rahman; Sirisa, Ng Mei Xin*

S Workplace Happiness, Transformational Leadership and Affective Commitment
pp. 2872-2875(4)
Authors: *Abdullah, Abdul Ghani Kanesan; Ling, Ying-Leh; Ping, Chen Siew*

S Students' Higher Order Thinking Skills and Their Relationships with Problem Posing Ability
pp. 2876-2879(4)
Authors: *Ngah, Norulbiah; Ismail, Zaleha; Tasir, Zaidatun; Said, Mohd Nihra Haruzuan Mohamad*

S Challenges to Effective Implementation of Statutory Adjudication in Malaysia
pp. 2880-2883(4)
Authors: *Nasir, Nur Ilylia Iryani Mohamed; Ismail, Zulhabri; Nasir, Nasyairi Mat*

S On the Visit Rate to English for Specific Purposes Online Courses Enhancing Learners' Grades
pp. 2884-2888(5)
Authors: *Simonova, Ivana; Poullova, Petra*

S Utilization of Social Applications as a Way of Student's Engagement into a Learning Process
pp. 2889-2893(5)
Author: *Černá, Miloslava*

S Assessing Challenges Among University Undergraduates: A Case of Universiti Sains Malaysia
pp. 2894-2897(4)
Authors: *Khairani, Ahmad Zamri; Effendi, Mohd; Matore, Ewan Mohd*

S A Proposed Framework in Ascertaining Success Factors of Mosque Cooperative
pp. 2898-2902(5)
Authors: *Sallehuddin, Abdullah; Masuod, Md. Shukor; Mustafa, Mohd Ariff; Samsudin, Azizi; Jais, Mohammad; Said, Al Mansor Abu; Ismail, Hishamuddin*

S Students' Intention to Use Role-Play Games in a Class for Japanese Language Proficiency
pp. 2903-2906(4)
Authors: *Suki, Norbayah Mohd; Suki, Norazah Mohd*

S Is Receptive Vocabulary Knowledge a Predictor for English as a Second Language Learners' Level of Speaking Performance?
pp. 2907-2910(4)
Authors: *Lateh, Nor Hazwani Munirah; Shamsudin, Sarimah; Singh, Manvender Kaur Sarjit; Said, Seriaznita Mat*

S Investigating the Measurement of Students' Opinion in Engaging Electronic Word of Mouth via Social Networking Sites
pp. 2911-2914(4)
Authors: *Suki, Norazah Mohd; Suki, Norbayah Mohd; Othman, Irma Wani*

S Auditor-Client Relationship: Perceived Expectation and Issues
pp. 2915-2917(3)
Authors: *Paino, Halil; Jabar, Faizan Abd*

S Chinese Concept of "Governing the Country According to Law" and Its Soviet Predecessor: A Comparative Law Analysis
pp. 2918-2921(4)
Author: *Sopin Vadim*

- S** Persuasion, Consumer Engagement, and Performance of Malaysian Manufacturing Enterprises
pp. 2922-2924(3)
Authors: *Mamun, Abdullah Al; Nasir, Wan Mohd Nazdrol Bin Wan Mohd; Ibrahim, Mohamed Dahlan; Muniady, Rajennd A/L; Sivageahnam, Kumaraguru*
-
- S** Effect of Market and Interaction Orientations on Innovation Orientation and Enterprise Performance
pp. 2925-2928(4)
Authors: *Mamun, Abdullah Al; Nasir, Wan Mohd Nazdrol Bin Wan Mohd*
-
- S** Assessment on Subjective Sustainable Well-Being for Central Region of Malaysia
pp. 2929-2933(5)
Authors: *Bakar, Aisyah Abu; Osman, Mariana Mohamed; Bachok, Syahriah; Ibrahim, Mansor; Abdullah, Alias*
-
- S** Testing the Mediating Effect of Training Motivation in the Military Training Program
pp. 2934-2937(4)
Authors: *Zainol, Noor Azmi Mohd; Ridzuan, Ahmad Azan; Ismail, Azman*
-
- S** Decision Centric Knowledge Management System for Manufacturing SMEs: A Conceptual Framework
pp. 2938-2941(4)
Authors: *Razali, Nurshahida Binti Muhamad; Mamun, Abdullah Al; Zakaria, Mohd Nazri Bin; Malarvizhi, C. A; Nawi, Noorshella Bt Che*
-
- S** Leadership Practices to Support TESOL Program for EFL Students—A Case Study at BINUS University
pp. 2942-2946(5)
Authors: *Asmani, Almodad Biduk; Wiharja, Chandra Kurniawan*
-
- S** Speed of Adjustment and Macro Economic Growth
pp. 2947-2950(4)
Authors: *Hussain, Hafezali Iqbal; Shamsudin, Mohd Farid; Hasim, Muhammad Asyraf; Salem, Milad Abdelnabi; Gadar, Kamisan; Ali, Azlan; Abdullah, Ahmad Monir*
-

S A Review on the Development of Algebraic Thinking Through Technology
pp. 2951-2953(3)
Authors: *Mustaffa, Najihah Binti; Ismail, Zaleha Binti; Said, Mohd Nihra Haruzuan Bin Mohamad; Tasir, Zaidatun Binti*

S Entrepreneurship Education and Students' Career Choice
pp. 2954-2957(4)
Authors: *Mamun, Abdullah Al; Fong, Shaw Pui; Nawli, Noorshella Binti Che*

S Socio-Demographic Variation on Tourism Expenditure in Melaka UNESCO World Heritage Area
pp. 2958-2961(4)
Authors: *Amir, Syakir; Osman, Mariana Mohamed; Bachok, Syariah; Ibrahim, Mansor*

S A Review of the Existing Guidelines and Legislations on Dengue Prevention Measures Being Implemented in the Malaysian Construction Projects
pp. 2962-2965(4)
Authors: *Basar, Shairah; Ismail, Zulhabri; Nasir, Nasyairi Mat*

S Turning Industrial Visit Into Rich Learning Experiences
pp. 2966-2969(4)
Authors: *Kim-Soon, Ng; Razzaly, Wahid; Ahmad, Abd Rahman; Shen, Vincent Lau Kum*

S Challenges of Accurate Estimation in Preliminaries of Construction Projects
pp. 2970-2973(4)
Authors: *Abas, Abdul Aziz; Arshad, Ruslan Affendy; Ismail, Zulhabri*

S Examining Factors to Retain Human Talent in Oil and Gas Industry
pp. 2974-2977(4)
Authors: *Rony, Nazneen Islam; Suki, Norazah Mohd; Chowdhury, Iftekhar Amin*

S Predicting Customer Recommendation Towards Homestay at West Pahang Region
pp. 2978-2982(5)
Authors: *Muhammed, Mohd Faizal Azrul Azwan; Jabar, Faizan Abd; Wahid, Sharifah Norhuda Syed; Paino, Halil; Dangi, Mohamad Ridhuan Mat*

S Determining Factors Contributing to Road Traffic Accident in UiTM Pahang
pp. 2983-2986(4)
Authors: *Zaki, Suhanom Mohd; Muhamed, Mohd Faizal Azrul Azwan; Wahid, Sharifah Norhuda Syed; Ramli, Noor Affeeda; Yunus, Nor Khairunnisa Mat*

S Ethnic Tolerance in Urban Malaysia
pp. 2987-2990(4)
Authors: *Nizah, Mohd Azmir Mohd; Samsu, Ku Hasnita Ku; Azzis, Muhammad Shamshinor Abdul; Bakar, Afi Roshezry Abu*

S Organizational Challenges and Opportunities in the Case of Foxconn Technology Group
pp. 2991-2994(4)
Authors: *Wei, Ng Rui; Usman, Azri Bin*

S Overcoming the Shortfall of Resources for the Growth of Malaysian University Start-Up Companies
pp. 2995-2998(4)
Authors: *Yasin, Norazlina Mohd; Quoquab, Farzana; Kamarudin, Suzilawati; Mohammad, Jihad*

S Diabetes Friendly Logo: Determinants of the Purchase Intention
pp. 2999-3002(4)
Authors: *Ishak, Maisarah; Marzuki, Sharifah Zannierah Syed; Hilmi, Zulkifli Ab. Ghani; Halim, Roslilee Ab*

S The Development of Islamic Spiritual Leadership Concept
pp. 3003-3005(3)
Authors: *Usman, Azri; Mahadi, Nomahaza; Quoquab, Farzana; Wei, Ng Rui*

S Factors Influencing Entrepreneurial Intention and the Moderating Role of Entrepreneurship Education: A Conceptual Model
pp. 3006-3008(3)
Authors: *Shamsudin, Siti Farhah Fazira Binti; Mamun, Abdullah Al; Nawi, Noorshella Binti Che; Nasir, Noorul Azwin Binti Md; Zakaria, Mohd Nazri Bin*

S The Influence of Personal Engagement and Time Management on Employees' Job Performance

pp. 3009-3012(4)

Authors: *Omar, Khatijah; Anuar, Marhana Mohamed; Yaakop, Azizul Yadi; Halim, Mohd Abi Sofian Abdul; Harun, Madzli; Hau, Tan Chi*

S The Role of Management Capabilities on Entrepreneurial Orientation and Firm Growth Relationship

pp. 3013-3015(3)

Authors: *Sahimi, Musli; Rizal, Adriana Mohd.; Husin, Maizaitulaidawati Md; Kamarudin, Suzilawati*

S Behavior Characterization of Members of the Specialized Units of the National Police of Ecuador in Situations of Conflict

pp. 3016-3020(5)

Authors: *Vayas, Germania; Pico, Andrea; Ilaja, Betsy*

S Effective Sales Training in a Direct Selling Organization

pp. 3021-3024(4)

Authors: *Zaki, Engku Badreena Engku Mohamad; Rizal, Adriana Mohd.; Kamarudin, Suzilawati; Husin, Maizaitulaidawati Md; Sahimi, Musli*

S Improving Small and Medium Enterprises Financing for Stronger Financial and Non-Financial Performance

pp. 3025-3028(4)

Authors: *Kim-Soon, Ng; Ahmad, Abd Rahman; Poh, Yau Chau*

S Visual Art from the Perspectives of Islamic Shariah: A Proposed Model

pp. 3029-3032(4)

Authors: *Ramli, Ishak; Masrek, Mohamad Noorman; Gani, Muhamad Abdul Aziz Ab; Zain, D'zul Haimi Md; Mokhtar, Mumtaz; Osman, Muhamad Rahimi*

S Need Analysis for Service Quality as a Proponent in Medical Tourism Industry

pp. 3033-3036(4)

Authors: *Oktriono, Kristianus; Tarigan, Wendy P*

S The Perception of Muslim on Family Takaful Scheme Participation in Malaysia: A Qualitative Study

pp. 3037-3041(5)

Authors: *Husin, Maizaitulaidawati Md; Rahman, Asmak Ab; Rizal, Adriana Mohd.; Kamarudin, Suzilawati; Hussin, Nazimah*

S Human Resource Outsourcing Practicing: Does Cost Reduction and Business Strategy Affect Government Link Companies (GLCs)?

pp. 3042-3045(4)

Authors: *Mansor, Mohd Fitri; Abu, Noor Hidayah; Rashid, Intan Maizura Abd; Sa'aban, Syahira*

S Employee Engagement and Turnover Intention: An Empirical Investigation in the Plantation Industry

pp. 3046-3048(3)

Authors: *Sudirman, Nurshazwani Amalina; Husin, Maizaitulaidawati Md; Rizal, Adriana Mohd; Kamarudin, Suzilawati; Singh, Harcharanjit*

S Market Orientation and Innovative Performance: Comparing Service and Manufacturing Firms

pp. 3049-3052(4)

Authors: *Abdullah, Nor Hazana; Hamid, Nor Aziati Abdul; Shamsuddin, Alina; Wahab, Eta*

S Rationale for the Performance-Based Research Fund at Malaysian Higher Education Institutions

pp. 3053-3056(4)

Authors: *Ahmad, Abd Rahman; Sunari, Siti Norfariza Binti; Soon, Ng Kim; Farley, Alan; Ismail, Russayani*

S Factors Influencing Supplier Selection Process Among Muslim Food Operators: A Qualitative Study

pp. 3057-3060(4)

Authors: *Ali, Roslina; Kader, Mohd Aidil Riduan Awang; Yunus, Nor Khairunnisa Mat; Mohezar, Suhana; Nazri, Mohammad*

S Analysis Balanced Scorecard in Tour Travel Agency in Indonesia

pp. 3061-3063(3)

Authors: *Sanny Lim; Nurtiahin; Rianto; Novela; Sellu; Rinai; Teguh; Nurraha; Akhar*

S Illuminative Approach in Evaluation of Curriculum of Chinese Literature Department
pp. 3064-3067(4)
Authors: *Ying, Yi; Mursitama, Tirta Nugraha*

S Determinants of Consumer Impulse Buying Behaviour in Context of Footwear Industry
pp. 3068-3070(3)
Authors: *Falahat, Mohammad; Migin, Melissa W; Chuan, Chong Shyue; Kai, Sia Bik*

S An Integrated Technical and Marketing Approach to E-Banking Customer Satisfaction
pp. 3071-3074(4)
Authors: *Kim-Soon, Ng; Ahmad, Abd Rahman; Samhana, Nur*

S The Cinematic Portrayal of Cultural Identity in the Malaysian Top-Grossing Movie *The Journey*
pp. 3075-3079(5)
Authors: *Changsong, Wang; Yiming, Chen*

S Fundamental Rights of Domestic Workers in Malaysia: Special Reference to the Employment Act 1955 and International Labour Organization Convention (ILO) No. 189
pp. 3080-3083(4)
Authors: *Adi, Mohd Nazir Mohd; Noor, Haris Md; Kamaruddin, Nor Kamariah*

S Own Price and Income Elasticities of Food in Malaysia
pp. 3084-3086(3)
Authors: *Ooi, Bee Chen; Rahim, Khalid Abdul; Radam, Alias; Nor, Norashidah Mohamed*

S The Essential of Induction, Training and Development Program for the Boards in Indonesian State-Owned Enterprises
pp. 3087-3091(5)
Author: *Sari, Synthia Atas*

S A Comparative Study on Viewers' Perceptions of the Portrait of the MH370 Incident by the Social Media in Malaysia and China
pp. 3092-3096(5)
Authors: *Changsong, Wang; Yiming, Chen; Ahmad, Jamilah Hj; Jinsheng, Zhang*

S Structural Equation Modeling for Healthy Food Products Purchase

Intentions

pp. 3097-3101(5)

Authors: *Marzuki, Sharifah Zannierah Syed; Halim, Roslilee Ab; Hilmi, Zulkifli Ab Ghani; Ishak, Maisarah*

S Intellectual Capital Disclosure: The Effect of Family and Non-Executive Directors on Board

pp. 3102-3106(5)

Authors: *Kamardin, Hasnah; Bakar, Robiah Abu; Ishak, Rokiah*

S Identifying the Elements of Quality Behaviour-Based Safety for Safety Improvement

pp. 3107-3110(4)

Authors: *Hashim, Norfashiha; Ismail, Faridah; Yusuwan, Norazian Mohamad*

S The Antecedents of Consumer Behavioral Intention in Social Commerce

pp. 3111-3114(4)

Authors: *Rashid, Nurul Afzan Abd; Mokhlis, Safiek; Yaakop, Azizul Yadi*

S Design Suggestions for Concurrent Urban Transformation in a Developing Country

pp. 3115-3119(5)

Authors: *Giao, Quynh Ngoc Pham; Lee, Mihyang; Han, Seung Hoon*

S The Effect of Attitude and Understanding Towards Goods and Service Tax Satisfaction Among Business Community in Malaysia

pp. 3120-3123(4)

Authors: *Aziz, Saliza Abdul; Bidin, Zainol; Marimuthu, Munusamy*

S Frequency Analysis of Academic Words in Malaysian Secondary School English as Second Language Textbooks: A Corpus Study

pp. 3124-3127(4)

Authors: *Noorizan, Alia Dzafrina; Shamsudin, Sarimah; Manan, Amerrudin Abd; Singh, Manvender Kaur Sarjit*

S Post Occupancy Evaluation for Sustainable Neighborhood
Development

pp. 3128-3131(4)

Authors: *Yaman, Rostam; Thadaniti, Suwattana; Suntornvongsagul, Kallaya; Adnan, Hamimah; Ahmad, Noraini*

S An Educationist's View of Blended Learning-Cognitive
Apprenticeship Complementarity: A Shakespearean Classroom
Experience

pp. 3132-3136(5)

Authors: *Said, Seriaznita Mat; Elley, Raj Ali Zahid; Shamsudin, Sarimah; Lateh, Nor Hazwani Munirah*

S Modernism in *Sang Pencerah* Film Directed by Hanung Bramantyo

pp. 3137-3139(3)

Authors: *Puspitasari, Dyah Gayatri; Sabana, Setiawan; Ahmad, Hafiz Azis; Wijaya, Hanny*

S The Impact of Work Family Conflict on Wellbeing Among Male
Employees

pp. 3140-3143(4)

Authors: *Ibrahim, R. Zirwatul Aida R.; Bakar, Azlina Abu; Dagang, Mazidah Mohd*

S Moral Effect of Workers After Reinstatement

pp. 3144-3147(4)

Authors: *Mansor, Zuraina Dato; Yaacob, Samsudin; Jaharuddin, Norsiah*

S An Integrated Model of Perceived Quality in the Brand
Performance of Higher Education Institution

pp. 3148-3150(3)

Authors: *Shue, Chua Moong; Falahat, Mohammad*

S Disclosure of Executive Directors' Remuneration from Multiple
Theoretical Lenses and Cultural Perspective

pp. 3151-3154(4)

Authors: *Malak, Siti Seri Delima Abdul; Chern, Ooi Sue; Shabani, Nor Afifah*

S Financial Liberalization and Divisia Money Demand in Indonesia

pp. 3155-3158(4)

Authors: *Sianturi, Ronald Hasudungan; Tanjung, Ahmad Feri; Leong, Choi-Meng; Puah, Chin-Hong; Brahmana, Rayenda Khresna*

S Macroeconomic Determinants of Indonesian Tourism Demand in Malaysia
pp. 3159-3162(4)
Authors: *Tanjung, Ahmad Feri; Thien, Fung-Thai; Puah, Chin-Hong; Brahmana, Rayenda Khresna; Sianturi, Ronald Hasudungan*

S Revisiting the Role of Public Debt in Economic Growth: The Case of Malaysia
pp. 3163-3166(4)
Authors: *Tan, Yao-Feng; Chin, Mui-Yin*

S Addressing the Importance of the Sensory Aspect in Tourism Studies—A Literature Review
pp. 3167-3169(3)
Authors: *Rahman, Nur Hidayah Abd; Khalifah, Zainab; Ismail, Hairul Nizam*

S The Implementation of Activity-Based Costing in Malaysian Small and Medium-Sized Enterprises
pp. 3170-3173(4)
Authors: *Ahmad, Kamilah; Teng, Neoh Wan; Zabri, Shafie Mohamed*

S The Adoption of Social Media for Student Entrepreneurs Using Modified Unified Theory of Acceptance and Use of Technology Model: A Review
pp. 3174-3177(4)
Authors: *Shokery, Noorlisa Maria A. Hamid; Naw, Noorshella Che; Nasir, Noorul Azwin Md.; Raston, Nursalihah Ahmad*

S Socio-Cultural Impacts of Tourism: A Case Study Desa Tugu Puncak
pp. 3178-3180(3)
Author: *Ariani, Vitria*

S Cognitive Writing Strategies of English as Second Language Students in Higher Education: A Sociocultural Perspective
pp. 3181-3184(4)
Authors: *Fong, Lee Lai; Narayanan, Geethanjali; Hoon, Teoh Sian; Fook, Chan Yuen; Sidhu, Gurnam Kaur*

S A Qualitative Study on Public Breastfeeding: What's Appropriate and Inappropriate in Penang, Malaysia?

pp. 3185-3189(5)

Authors: *Aloysius, Maria; Jamaludin, Shariffah Suraya bt Syed; Aloysius, Molly*

S Enhanced Global Score Test for Multivariate Survival Analysis of Recurrent Events Data

pp. 3190-3193(4)

Authors: *Zain, Zakiyah; Aziz, Nazrina; Ahmad, Yuhaniz*

S The Readiness of Quality Function Deployment Theory Implementation Among the SME Apparel in Malaysia: A Review

pp. 3194-3197(4)

Authors: *Zur, Rohana; Alwiah, Sahil. S. Sharifah; Syaimak, A. S.; Legino, R.*

S Measuring Environmental Performance Awareness: A Qualitative Approach

pp. 3198-3201(4)

Authors: *Rosli, Nennie Trianna; Ahmad, Fauziah Sh.; Quoquab, Farzana; Salam, Zarina Abdul*

S Positive Impact of Equine Programs and Education on Youth Development

pp. 3202-3204(3)

Authors: *Darmansah, Nur Fadilah; Misnan, Mohd Saidin; Sam, Abdul Rahman Mohd; Omar, Abdul Hafiz*

S Green "Eco-Label" or "Greenwashing"? Building Awareness About Environmental Claims of Marketers

pp. 3205-3208(4)

Authors: *Shahrin, Ruzanna; Quoquab, Farzana; Jamil, Rossilah; Mahadi, Nomahaza; Mohammad, Jihad; Salam, Zarina; Hussin, Nazimah*

S Individual Differences and Information Needs: An Exploratory Study of Migrant Workers in Malaysia

pp. 3209-3212(4)

Authors: *Baharuddin, Mohammad Fazli; Masrek, Mohamad Noorman; Shoid, Mohd Shamsul Mohd*

S Information Needs, Information Sources and Satisfaction of Migrant Workers in Malaysia: An Exploratory Study
pp. 3213-3217(5)
Authors: *Masrek, Mohamad Noorman; Baharuddin, Mohammad Fazli; Izhar, Tengku Adil Tengku*

S The Joint Roles of the Executive Governmental Functionaries in Enhancing the Islamic Economics System
pp. 3218-3221(4)
Author: *Nor, Mohd Zakhiri Md*

S The Role of Family Businesses in Building Entrepreneurial Leadership Talent Among University Students
pp. 3222-3225(4)
Authors: *Arshad, Yusri; Zakaria, Siti Fatimah; Ibrahim, Sharifah Norhafiza Syed*

S The Moderating Role of User Attitude on the Relationship Between Perceived Ease of Use and E-Recruitment Adoption in Nigerian Civil Service: A Proposed Conceptual Framework
pp. 3226-3228(3)
Authors: *Tangaza, Ibrahim Aminu; Mansor, Mohd Fitri Bin; Abu, Noor Hidayah; Nasir, Hussien*

S Students' Perspectives on Postgraduate Supervisory Practices
pp. 3229-3232(4)
Authors: *Sidhu, Gurnam Kaur; Kaur, Sarjit; Choo, Lim Peck; Fook, Chan Yuen; Fong, Lee Lai; Jeffry, Nur Atiqah*

S Governance Strategies in Sustainable Campus Using Rasch Model
pp. 3233-3236(4)
Authors: *Ngadiman, Norhayati; Rahman, Ismail Abdul; Kaamin, Masiri; Amiruddin, Mohd Hasril; Leman, Abdul Mutalib; Mokhtar, Mazlin*

S Perception of Sustainable Efforts Towards Event Greening
pp. 3237-3240(4)
Authors: *Ahmad, Nor Lela; Rashid, Wan Edura Wan; Yunus, Noor Azlina Mohamed; Mahmood, Nik Hasnaa Nik; Shamsuddin, Shuhana*

S Discourse Functions of Zero Pronouns in Tai Dam

pp. 3241-3245(5)

Author: *Dolphin, Itsarate*

S Measuring Satisfaction of Engineering Technology Students in Malaysian Public Universities

pp. 3246-3250(5)

Authors: *Ali, Rosmah; Hussain, Noor Hamizah; Ismail, Kamsiah Mohd; Salim, Kamilah Radin; Haron, Habibah @ Norehan; Noor, Norhayati Mohamed; Abdullah, Morina; Mohamed, Zainai; Mulop, Normah; Rahman, Rozita Juliana Abd*

S An Overview of the Protection of Children Rights Under Islamic Law

pp. 3251-3254(4)

Authors: *Mohd, Azizah; Ibrahim, BadruddinHj; Alkali, Alhaji Umar*

S Student Readiness for Postgraduate Study in Terms of Research and Conceptual Skills: Perspectives from Supervisors

pp. 3255-3258(4)

Authors: *Kaur, Sarjit; Sidhu, Gurnam Kaur; Hoon, Teoh Sian; Jamian, Leele Susana*

S Higher Order Thinking Skills (HOTS): Teacher Training and Skills in Assessing Science Learning

pp. 3259-3262(4)

Authors: *Ismail, Mohamad Hisyam; Abdullah, Nabilah; Salleh, Muhamad Furkan Mat; Ismail, Marhamah*

S The Malaysian Science Teachers' Readiness and the Effectiveness of Professional Development Course for the Implementation of 'Pentaksiran Tingkatan 3'

pp. 3263-3267(5)

Authors: *Salleh, Muhamad Furkan Mat; Ismail, Mohamad Hisyam; Wahab, Noor Amira Adayu Abdul; Abdullah, Nabilah*

S Intellectual Science and Mathematics Program: Improving Students' Interest in Learning Science and Mathematics

pp. 3268-3272(5)

Authors: *Nasir, Nurul Akmal Md; Salleh, Muhamad Furkan Mat; Rasid, Nor Syazwani; Ismail, Mohamad Hisyam; Abdullah, Nabilah*

S Selected Peer-Reviewed Articles from the International Conference on Public Health for Tropical and Coastal Development, Semarang, Indonesia, 15–17 October 2016
pp. 3273-3273(1)
Author: *Denny, Hanifa M*

S Pregnant Woman Mentoring by Public Health Students to Increase Community Participation
pp. 3274-3276(3)
Authors: *Dharmawan, Yudhy; Suyatno, .*

S Mangrove Health Index as Part of Sustainable Management in Mangrove Ecosystem at Karimunjawa National Marine Park Indonesia
pp. 3277-3282(6)
Authors: *Prasetya, Johan Danu; Ambariyanto, .; Supriharyono, .; Purwanti, Frida*

S Dengue Hemorrhagic Fever (DHF) Cases in Semarang City are Related to Air Temperature, Humidity, and Rainfall
pp. 3283-3287(5)
Authors: *Widyorini, Prasti; Shafrin, Kintan Arifa; Wahyuningsih, Nur Endah; Murwani, Retno; Suhartono, .*

S Dentist Expert System Software in Dental Caries Detection
pp. 3288-3290(3)
Authors: *Subekti, Ani; Subinarto, .; Sariyem, .; Ningtyas, Endah Aryati Eko*

S Hormonal Contraceptive Exposure and Risk Factors for Meningioma in Soetomo Hospital 2012–2016
pp. 3291-3294(4)
Authors: *Dewata, Lila; Prasetyo, Budi; Yuliati, Amik; Wahyuhadi, Joni*

S Study on Occupational Self-Efficacy of Trainee at Job Training Center
pp. 3295-3298(4)
Authors: *Nurtjahjanti, Harlina; Desiningrum, Dinie R*

S Comparing an Interactive Software and Flipchart Media for Dental Health Knowledge Among Elementary School Students in Semarang
pp. 3299-3301(3)
Authors: *Nugraheni, Hermien; Subekti, Ani; Citra, Alfiani*

S Correlation Between Self-Reliance of Its Patients and Their Medication Adherence in Magelang Pulmonary Health Center, Indonesia
pp. 3302-3305(4)
Authors: *Dwidiyanti, Meidiana; Suryawati, Chriswardani*

S Activity Test of *Pleurotus ostreatus* Jacq and *Pleurotus cystidiosus* O. K. Mill as Antibacteria Against *Escherichia coli* Migula
pp. 3306-3308(3)
Authors: *Rossiana, Nia; Mayawatie, Betty; Amalia, Ajeng Nur*

S V1016G and F1534C Mutation in the VGSC Gene of Cypermethrin Resistant *Aedes aegypti* from Central Java
pp. 3309-3312(4)
Authors: *Widiastuti, Dyah; Agustiningsih, .*

S SMS Gateway Application for Suspected Tuberculosis Reporting
pp. 3313-3317(5)
Authors: *Indriani, Diah; Mahmudah, .; Soenarnatalina, .; Notobroto, Hari Basuki*

S Information System to Support Health School Unit at Klaten Regency Health Office
pp. 3318-3320(3)
Authors: *Nurokhmat, F. S; Jati, Sutopo Patria; Mawarni, Atik*

S Isolation and Identification of Lactoferrin and Lactoperoxidase from the Colostrum of Indonesian Ettawa Crossbred Goat
pp. 3321-3324(4)
Authors: *Harjanti, Dian Wahyu; Ciptaningtyas, Rizke; Al-Baarri, Ahmad Ni'matullah; Kusumanti, Endang*

S The Estimation *Cut Off Point* Energy and Protein Intake to Weight and Length of Birth Based on Maternal Height
pp. 3325-3328(4)

S The Effect of Antenatal Class Plus Coping Skill Training on the Level of Stress and Childbirth Self-Efficacy

pp. 3329-3333(5)

Authors: *Runjati, .; Susanto, Hardhono; Sawitri, Dian Ratna; Thaufik, Syarief*

S The Meaning of Tattoo and Lesbian Couples: A Phenomenology Study

pp. 3334-3338(5)

Author: *Rokhmah, Dewi*

S Inverse Distance Weighted Method and Environmental Health Risks of Plumbum Pollution in Drinking Water in Belawan Coastal Area

pp. 3339-3343(5)

Authors: *Indirawati, Sri Malem; Pandia, Setiaty; Mawengkang, Herman; Hasan, Wirsal*

S *Annona muricata* Associated with Increase Phytohemagglutinin Induced Spleen IL-10 Production of Swiss Mice During Cerebral Malaria Phase

pp. 3344-3348(5)

Authors: *Djamiatun, Kis; Abdulaziz, Khalid M. A; Naamat, Walid F. A; Kristina, Tri Nur; Nugroho, Djoko*

S Spatial Analysis and Behavior Evaluation to Identify Differentiating Factors of Filariasis Endemic Status

pp. 3349-3354(6)

Authors: *Siwiendrayanti, Arum; Pawenang, Eram Tunggul; Indarjo, Sofwan*

S Lag Spatial Modeling for Finding the Factors Affecting Infants Mortality Rate in East Java

pp. 3355-3357(3)

Author: *Soenarnatalina, Melaniani*

S Knowledge Improvement for Wound Management on Fishermen at Pagedangan Ilir Village, Tangerang Regency

pp. 3358-3360(3)

Authors: *Novendy, .; Kevin, .; Soesilo, Jesslyn Adytia; Indahsari, Septiany; Fikri, Muhammad Faridzi; Fifi, .; Drew, Clement*

S The Effect of Selenium Supplementation on Hemoglobin Among Farmers Working as Pesticide Sprayers

pp. 3361-3363(3)

Authors: *Suwondo, Ari; Achmadi, Umar Fahmi; Suratman, .*

S Asset-Based Community Development (ABCD) Model: An Approach for Improving Environmental and Behavioral Health

pp. 3364-3366(3)

Authors: *Syarifuddin, Nurdiyanah; Nildawati, .*

S Competence *Aedes* as Vectors Based on Biological Characteristics and Vulnerability of Dengue Virus in Semarang City-Indonesia

pp. 3367-3371(5)

Authors: *Martini, .; Wahyuni, Chatarina Umbul; Subekti, Sri; Notobroto, Hari Basuki; Hestningsih, Retno; Yuliawati, Sri; Purwantisari, Susiana*

S *Annona muricata* Associated with Reduced Macrophage Phagocytic Index of Swiss Mice During Cerebral Malaria Phase

pp. 3372-3375(4)

Authors: *Djamiatun, Kis; Albakoush, Husen Mohamed; Kristina, Tri Nur; Nugroho, Djoko*

S Spatial Analysis of Dengue Haemorrhagic Fever Incidence in Salatiga City, Central Java, Indonesia

pp. 3376-3379(4)

Authors: *Nurjazuli, .; Dangiran, Hanan Lanang*

S Reduce Spleen-IFN- γ Correlated with CXCL9 Levels During Cerebral Malaria Phase in *Annona muricata*-Treated Swiss Mouse Study

pp. 3380-3384(5)

Authors: *Djamiatun, Kis; Naamat, Walid F. A; Dharmana, Edi; Wijayahadi, Noor; Nugroho, Djoko*

S Advancing Research and Education on Public Health for Tropical and Coastal Region

pp. 3385-3388(4)

Authors: *Denny, Hanifa M.; Utama, Yos J; Sugihantono, Anung*

S Small Island Developing States, Climate Change, and Food and Nutrition Security

pp. 3389-3392(4)

Authors: *Schubert, Lisa; Foley, Wendy; Savage, Amy; Muriuki, Grace*

S Training and Education in Occupational Health—A Global Challenge

pp. 3393-3394(2)

Author: *Wagner, Norbert L*

S Risk Analysis of Total Suspended Particulates at Building Construction Area on Workers' Health

pp. 3395-3398(4)

Authors: *Syafrudin, Syafrudin; Andarani, Pertiwi; Anindya, Putri Kharisma*

S Safety Climate and Construction Workers' Compliance on the Use of Personal Protective Equipment in Construction Project Jakarta

pp. 3399-3401(3)

Authors: *Alfanti, Galuh; Sawitri, Dian Ratna*

S How Traditional Fishermen Prevent Accidents in Semarang Residential

pp. 3402-3405(4)

Author: *Widjasena, Baju*

S Occupational Exposure on Gasoline Station Workers Not Affect the Nasal Mucociliary Clearance Time and Pulmonary Function Test

pp. 3406-3408(3)

Authors: *Prasetyo, Awal; Darry, Salim; Samuel, .; Redyaksa, Drestanta; Sadhana, Udadi; Sigit, Armunanto*

S Cultivating the Research Environment to Enhance Quality of Life of Academics in an University Setting

pp. 3409-3410(2)

Authors: *Sawitri, Dian Ratna; Nurtjahjanti, Harlina; Prasetyo, Anggun Resdasari*

S Correlation Between Tenure, BMI and Musculoskeletal Disorders Complaints Among Gemstone Craftsman in Keramat Village East Martapura District
pp. 3411-3413(3)
Authors: *Setyaningrum, Ratna; Hikmah, Noor; Pujianti, Nita*

S Promotion of Safety and Health in Informal Sector by Primary Health Center in Semarang
pp. 3414-3416(3)
Authors: *Wahyuni, Ida; Ekawati, .*

S The Effect of Exclusive Breastfeeding Practice on Maternal Anthropometry and Body Fat Changes
pp. 3417-3420(4)
Author: *Pangestuti, Dina Rahayuning*

S The Difference of BMI and Micronutrient Intake Between Multibacillary Leprosy and Non Leprosy (A Study in District Brondong, Lamongan 2013)
pp. 3421-3423(3)
Authors: *Fatimah, Siti; Rahfiludin, M. Zen*

S Promoting Healthy Diet Through Peer Nutrition Counseling *Posyandu Remaja* in Semarang City, Central Java, Indonesia
pp. 3424-3426(3)
Authors: *Noer, Etika Ratna; Dieny, Fillah Fithra; Panunggal, Binar*

S Nutritional and Antinutritional Properties of *lindur* (*Bruguiera gymnorrhiza*) Fruits Flour from Different Pre-Treatments
pp. 3427-3430(4)
Authors: *Dewi, Eko Nurcahya; Kurniasih, Retno Ayu; Purnamayati, Lukita*

S The Risk Factors of Underweight Among Under-Five Children in Rural Area of Central Java, Indonesia
pp. 3431-3434(4)
Author: *Suyatno, .*

S Positive Correlation Between Kidney Injury Molecule-1 and Gentamicin Trough Level in Neonates with Infection
pp. 3435-3438(4)
Authors: *Dwijayanti, Adisti; Louisa, Melva; Rundjan, Lily; Simanjuntak, Ernawati; Setiabudy, Rianto*

S Antenatal Depression and Its Determinant Factors in Urban Community Setting
pp. 3439-3441(3)
Authors: *Anindyajati, Gina; Ismail, R. Irawati; Diatri, Hervita; Elvira, Sylvia D*

S The Prediction Model for Low Birth Weight in Batang District, Central Java, Indonesia
pp. 3442-3444(3)
Authors: *Kartasurya, Martha Irene; Dharmawan, Yudhy; Widjanarko, Bagoes; Handayani, Novia*

S Reliability Testing of Screening Instruments for Antenatal Depression and Associated Risk Factors in Urban Primary Care
pp. 3445-3447(3)
Authors: *Ismail, R. Irawati; Anindyajati, Gina; Diatri, Hervita; Elvira, Sylvia D*

S Factors Related to Self-Efficacy for Early Marriage in Bangka Belitung Island Province, Indonesia
pp. 3448-3450(3)
Author: *Antarini, .*

S Issues on Detection of Preeclampsia from Antenatal Care Data: A Documentary Study in Temanggung District, Central Java Province
pp. 3451-3453(3)
Authors: *Purnami, Cahya Tri; Ginandjar, Praba; Agushybana, Farid; Jati, Sutopo Patria*

S Adolescents' Anxiety in the Coastal Region of Central Java, Indonesia
pp. 3454-3456(3)
Authors: *Ediati, Annastasia; Utari, Agustini*

S Hospital Food Hygiene Assurance and the Role of Food Handlers' Perception

pp. 3457-3460(4)

Authors: *Lestantyo, Daru; Husodo, Adi Heru; Irvati, Susi; Shaluhiyah, Zahroh*

S Knowledge of Reproductive Health to Assess Father's Role in Mijen Sub-District

pp. 3461-3463(3)

Authors: *Rimawati, Eti; Handayani, Sri; Haryadi, Toto*

S Correlation Between Place of Delivery, Husband's Support and Exclusive Breastfeeding Practice in Sungai Ulin, Banjarbaru City, Indonesia

pp. 3464-3467(4)

Authors: *Yulidasari, Fahrini; Rahman, Fauzie; Rani, Puspa*

S The Implementation of COPE-A Technique in Reducing Stress on Women Correctional Officer: Indonesian Setting

pp. 3468-3470(3)

Authors: *Ratnaningsih, Ika Zenita; Prihatsanti, Unika; Prasetyo, Anggun Resdasari*

S Psychological Distress Among University Student: An Exploratory Study

pp. 3471-3473(3)

Authors: *Salma, .; Rahmandani, Amalia; Kahija, Yohanis Franz La*

S The Effect of Counseling on Knowledge and Behavior of Leprosy Patients at UPTD Cibuaya, Kabupaten Karawang West Java

pp. 3474-3476(3)

Authors: *Komalaningsih, Sri; Alchumaira, Siti Fuadilla; Ruhyat, Ejob; Handayani, Asri*

S Effectiveness of Movie to Improve Knowledge, Attitude and Behavior in Preventing HIV Transmission from Mother to Child

pp. 3477-3479(3)

Authors: *Widatiningsih, Sri; Sukini, Tuti; Rofi'ah, Siti*

S Correlation Between Emotional Intelligence and Work Engagement of Special Need School Teachers

pp. 3480-3482(3)

- S** Demographic Characteristics and Self Independence Among Elderly in Surabaya City
pp. 3483-3485(3)
Authors: *Sulistiyorini, Yuly; Puspitasari, Nunik; Purnomo, Windhu*
-
- S** The Role of Social Capital and Community Participation in Case Detection Rate (CDR) of Tuberculosis: A Case Study of Sukoharjo District, Indonesia
pp. 3486-3489(4)
Authors: *Sulaeman, Endang Sutisna; Reviono, .; Hartanto, Rifai; Murti, Bhisma; Fanani, Mohammad*
-
- S** Evaluation of a Nutrition Knowledge Intervention in People Living with HIV/AIDS in Semarang, Central Java
pp. 3490-3492(3)
Authors: *Margawati, Ani; Aminarista, .; NurAfifah, Diana*
-
- S** Media Use Behavior and Health Literacy on High School Students in Semarang
pp. 3493-3496(4)
Authors: *Nurjanah, .; Soenaryati, Sri; Rachmani, Enny*
-
- S** Child Health Promotion Using Text Messaging in Kupang Regency, East Nusa Tenggara, Indonesia
pp. 3497-3499(3)
Author: *Nayoan, Christina Rony*
-
- S** Does Emotional Support as a Positive Learning Environment Improve Students' Help-Seeking Behavior?
pp. 3500-3503(4)
Authors: *Ariati, Jati; Listiara, Anita; Sasongko, Setiabudi*
-
- S** Teachers' Attitude and Expectation on Inclusive Education for Children with Disability: A Frontier Study in Semarang, Central Java, Indonesia
pp. 3504-3506(3)
Authors: *Kristiana, Ika Febrian; Widayanti, Costrie Ganes*

S Reduction of Leprosy Disabilities Through Self-Care Group “Payung Meureuleuy”: A Case Study in Tripa Makmur Sub District, Nagan Raya Regency

pp. 3507-3510(4)

Author: *Syahputri, Veni Nella*

S The Effect of Tooth Brushing Assistance on the Oral Hygiene of Blind and Deaf Students

pp. 3511-3513(3)

Authors: *Siregar, Irma; Sunarjo, Lanny; Haryani, Wiworo*

S Factors Related to the Sleep Patterns Behavior of Class XI Students in MA Assalaam Surakarta

pp. 3514-3516(3)

Authors: *Mustikawati, Fahmi Ulil Azmi; Prabamurti, Priyadi Nugraha; RatihIndraswari, .*

S Premarital Sex of Adolescents at Junior High School Students in Pekanbaru, Riau

pp. 3517-3520(4)

Authors: *Ismainar, Hetty; Marlina, Hastuti; Harnani, Yessi*

S Heavy Metals Level and Health Effects in Industrial Area Community

pp. 3521-3524(4)

Author: *Prasasti, Corie I*

S Pesticide Exposure and the Level of Reverse Triiodothyronine on School Children in Brebes District—Indonesia

pp. 3525-3530(6)

Authors: *Budiyono, .; Suhartono, .; Kartini, Apoina; Hadisaputro, Soeharyo; Pambayun, Tjokorda G. D*

S The Correlation Study of Temperature, Humidity, Lighting and the Quantity of Ambient Air Microorganisms

pp. 3531-3533(3)

Authors: *Budiman, .; Nugraha, Susiana; Bilqis, Karina*

S Analysis of Copper and Lead on Coastal Environment a Case Study of Kaliprau Coastal, Pemalang
pp. 3534-3536(3)
Authors: *Arifan, Fahmi; Winarni, Sri*

S How Important is Culture to Sanitation Uptake? The Influence of Local Values in Rural Bali
pp. 3537-3540(4)
Authors: *Dwipayanti, N; Rutherford, S; Phung, D; Chu, C*

S Host Risk Factors for Typhoid Fever in Children (A Case Study of North Sumatera Province)
pp. 3541-3543(3)
Authors: *Bruh, Rasidah Huraini; Hadisaputro, Suharyo; Budhi, Kamilah; Sakundarno, Mateus; Widjanarko, Bagoes*

S *Aedes aegypti* Resistance to Temephos in Central Java, Indonesia
pp. 3544-3546(3)
Authors: *Ikawati, Bina; Sunaryo, .; Wahyudi, Bondan Fajar*

S Skin Wounds as a Risk Factor for Leptospirosis in Semarang City: A Meta-Analysis Study
pp. 3547-3549(3)
Author: *Sakundarno, Mateus*

S Isolation and Identification Bacterial Endophyte of Sweet Potato (*Ipomoea batatas L.*) and Its Antibacterial Test Against Bacterial Pathogen
pp. 3550-3553(4)
Authors: *Indrawati, Ida; Kusmoro, Joko; Fitriani, Aprilia Dyah*

S Comparison Between TB-HIV Patients and HIV Patients: A Cross-Sectional Study at Pulmonary Health Center Semarang City, Indonesia
pp. 3554-3557(4)
Authors: *Saraswati, Lintang Dian; Ginandjar, Praba; Pangestuti, Dina Rahayuning*

S The Bait Preference of American Cockroach (*Periplaneta americana*): Field and Laboratory Strains
pp. 3558-3561(4)
Authors: *Porusia, Mitoriana; Poynter, Alexander; Dhesi, Surindar; Lynch, Zena*

S Activities of Bio-Larvacides from Symbiont Bacterial of Soft Coral *Sarcophyton* sp. SCRTG4P4 Against *Aedes aegypti*
pp. 3562-3564(3)
Authors: *Sulistiyani, .; Hestningsih, Retno; Rahmawati, Dian Nur; Nuryadi, Handung; Kreshna, Bayu*

S Soil-Transmitted Helminth Infection in Elementary School Children: An Integrated Environment and Behavior Case Study in Bandungan Sub-District, Semarang District
pp. 3565-3568(4)
Authors: *Ginandjar, Praba; Saraswati, Lintang Dian; Martini, .*

S Diagnosis of Dengue Hemorrhagic Fever Based on Laboratory Test of Serology and PCR from Suspected Patients in Hospital
pp. 3569-3571(3)
Authors: *Martini, .; Purwantisari, Susiana; Widjanarko, Bagoes*

S Factors Associated with Failure of Conversion Among Tuberculosis Patients
pp. 3572-3575(4)
Authors: *Listyawan, Aji Gumilang; Adi, Mateus Sakundarno; Saraswati, Lintang Dian*

S Is Food Consumption Frequency Related to Dengue Haemorrhagic Fever Incidence on Toddler, Children, and Adolescents in Semarang City?
pp. 3576-3578(3)
Authors: *Fitria, Nurul; Laturohmi, Hepi Prihati Hayu; Widyorini, Prasti; Wahyuningsih, Nur Endah; Murwani, Retno*

S The Evaluation of Maternal and Child Health Reporting System Implementation at Wonosobo District, Central Java Province
pp. 3579-3581(3)
Authors: *Mawarni, Atik; Agushybana, Farid*

S Determinant of Health Insurance Ownership in the Informal Sector: A Panel Study from Indonesia Family Life Survey

pp. 3582-3585(4)

Authors: *Idris, Haerawati; Satriawan, Elan; Trisnantoro, Laksono*

S Social Capital, Health Insurance, and Community Action: Toward Universal Health Coverage for Informal Workers

pp. 3586-3589(4)

Authors: *Aji, Budi; Masfiah, Siti; Harwanti, Siti; Ulfah, Nur; Minh, Hoang Van*

S Cesarean Section Tariff Analysis Based on Indonesian Case Base Groups in Cipto Mangunkusumo Hospital

pp. 3590-3593(4)

Authors: *Santoso, Budi Iman; Trisnantoro, Laksono; Hendra, Yos*

S Evaluation on the Policy Implementation of Exclusive Breastfeeding During Work Hours in the Workplace

pp. 3594-3598(5)

Author: *Dina, Resa Ana*

S Characteristics of Type 2 Diabetes Mellitus Patients Based on Blood Sugar Level and Hba1c in Binjai Public Health Centres

pp. 3599-3601(3)

Authors: *Rusdiana, .; Savira, Maya; Amelia, Rina*

S Rural Area Residency Associated with Epithelial Cervical Cell Infection Occurrences Among Balinese Women (2013–2016)

pp. 3602-3605(4)

Authors: *Dwijayanth, Ni Kadek Ariesta; Mithayayi, Putu Asita Pungky; Prashanti, Nyoman Ananda Putri; Megapuspita, Gusti Ayu Teja Devi*

S The Correlation Between Body Mass Index and Self-Efficacy with Blood Glucose Level in Type 2 Diabetes Mellitus

pp. 3606-3609(4)

Author: *Amelia, Rina*

S The Correlation Between the Level of HbA1c with Total Serum Cholesterol of Uncontrolled Type 2 Diabetes Mellitus Patients in Binjai, Sumatera Utara

pp. 3610-3613(4)

Authors: *Amelia, Rina; Damanik, Harun Alrasyid; Lindarto, Dharma; Mutiara, Erna*

S Blood Glucose Profile Among Adult Women in Semarang

pp. 3614-3616(3)

Authors: *Kusuma, Rohmah; Saraswati, Lintang Dian; Sakundarno, Mateus*

S *Benguk* Soybean Cake Extract as the Stimulant of the Number and Motility of Mus Musculus Spermatozoa

pp. 3617-3620(4)

Authors: *Winarni, Sri; Dharmawan, Yudhy; Arifan, Fahmi*

S Selected Peer-Reviewed Articles from The Internet Data Telecommunication and Satellite 2016, Bali, Indonesia, 17–18 December, 2016

pp. 3621-3625(5)

Authors: *Gaol, Ford Lumban; Yunqing, Frank Guan; Setiono, Rudy; Kruger, Jan; Hastiadi, Fithra Faisal*

S Study on Change of Topography in Closed Water Area with Positioning Data and Depth Data

pp. 3626-3632(7)

Authors: *Chen, Narisu; Xiang, Qing; Yamamoto, Kazuhiro; Watanabe, Masaji*

S Analysis of Hybrid DDoS Defense to Mitigate DDoS Impact

pp. 3633-3639(7)

Authors: *Widagdo, Gede Barkah; Lim, Charles*

S Study on Applicability of Measurement System for Topography in Water Area

pp. 3640-3643(4)

Authors: *Qing, Xiang; Chen, Narisu; Yamamoto, Kazuhiro; Watanabe, Masaji*

S Performance Analysis of Different Push Notification Services Implementation on Vehicle Sharing Application

pp. 3644-3648(5)

- S** Credit Risk Assessment Using Machine Learning Algorithms
pp. 3649-3653(5)
Authors: *Attigeri, Girija V.; Pai, M. M. Manohara; Pai, Radhika M*
-
- S** Development of Modified Analytical Model for Investigating Acceptable Delay of TCP-Based Speech Recognition
pp. 3654-3659(6)
Authors: *Jarin, Asril; Fahmi, Husni; Suryadi, .; Ramli, Kalamullah*
-
- S** Multi-Sensing Wireless Sensor Network for Smart Building System
pp. 3660-3664(5)
Authors: *Samijayani, Octarina Nur; Addien, Linear; Fauzi, Ibnu; Zasyi, Marsah*
-
- S** Modeling Microbial Depolymerization Process of Exogenous Type with Consumption Rate and Microbial Growth
pp. 3665-3669(5)
Authors: *Watanabe, Masaji; Kawai, Fusako*
-
- S** Stationary and Periodic Background Decision Using Improved MOG Algorithm
pp. 3670-3673(4)
Author: *Kim, Jin-Tae*
-
- S** Congestion Free Vehicular Path Planning System: A Real-Time Cloud-Enabled ITS Application
pp. 3674-3678(5)
Authors: *Reddy, M. Bhargava; Pai, M. M. Manohara; Mallisery, Sanoop; Pai, Radhika M; Mahbadi, Milad*
-
- S** Enhanced Archive Format Using Data Chunking Scheme
pp. 3679-3682(4)
Authors: *Kim, Jin; Lim, Tai Sung; Ko, Young Woong*
-
- S** Simulation of Improvements Channel Propagation Affected by High Buildings and Rain on Mobile Network System in Mataram
pp. 3683-3686(4)
Authors: *Yadnya, Made Sutha; Sudiarta, I. Wayan*

S Software Application to Strengthening the Organization for Children Malnutrition
pp. 3687-3690(4)
Authors: *Diniari, Rosa; Sabarguna, Boy Subirosa; Abdurakhman, .*

S Medical Image Decision Support System Using Image Sync Scheme
pp. 3691-3694(4)
Authors: *Lee, Jae Gu; Ko, Young Woong; Byun, Yong Hwan*

S Characterization of L Band Erbium Doped Fiber Amplifier
pp. 3695-3699(5)
Authors: *Mujadin, Anwar; Syahriar, Ary*

S Characteristics of Multi-Mode Interference Couplers by the Method of Lines
pp. 3700-3703(4)
Authors: *Syahriar, Ary; Adam, Helmi; Djamal, Jusman Syafii; Lubis, H. Ahmad; Saleh, Randy Rahmat*

S Development and Composition of E-Learning Web Services Using Service Oriented Architecture
pp. 3704-3708(5)
Authors: *Kolekar, Sucheta V; Pai, Radhika M; Pai, M. M. Manohara; Nayak, Anupama*

S Cloud-Enabled Smart Health Monitoring of Vehicles: An ITS Application
pp. 3709-3713(5)
Authors: *Mehta, Yash; Pai, M. M. Manohara; Mallissery, Sanoop; Pai, M. Radhika*

S Emergency Medical Service for Patients with Cardiovascular Disease Based on Internet of Things
pp. 3714-3717(4)
Authors: *Ganiga, Raghavendra; Pai, M. M. Manohara; Pai, M. Radhika*

S PAPR Reduction of UFMC Communication for 5G Mobile System
pp. 3718-3721(4)
Authors: *An, Changyoung; Ryu, Heung-Gyoon*

S Response Time Assessment of Hilbert Huang Transform and Prony Analysis Using Phasor Measurement Data
pp. 3722-3724(3)
Authors: *Munir, B. S; Trisetyarso, A; Gaol, F. L; Soewito, B; Warnars, H. L. H. S*

S A Multi-Staged EEG (Electroencephalogram) Recognition Method
pp. 3725-3729(5)
Author: *Kim, Woongsik*

S Performance Comparison of Clustering Algorithms on Scientific Publications
pp. 3730-3732(3)
Authors: *Parlina, Anne; Ramli, Kalamullah*

S Prospective E-Library at the Faculty of Medicine
pp. 3733-3737(5)
Authors: *Sabarguna, Boy Subirosa; Fuady, Ahmad*

S A Survey of Numeracy Assessment Approaches for Patient E-Learning
pp. 3738-3741(4)
Authors: *Omidbakhsh, Mandana; Ormandjieva, Olga*

S Implementation of J48 Algorithm to Create Diarrhea Patient Profiling Based on Water Source and Sewage Infrastructure Condition
pp. 3742-3745(4)
Authors: *Hidayat, Fajar; Gaol, Ford Lumban*

S Mobile Application for Smart Campus System with iBeacon-uBeacon
pp. 3746-3750(5)
Author: *Husni, Emir*

S Kernel-Level File System for Minimizing File Modification Overhead
pp. 3751-3753(3)
Authors: *Kim, Jin; Yoo, Young Jun; Ko, Young Woong*

S Low Density Parity Check Code for OFDM Transmission Using Bit Flipping and Sum Product Algorithm

pp. 3754-3757(4)

Authors: *Sahputra, Robby; Astharini, Dwi; Faisal, .*

S The Influence of Wideband Amplifier Supply on the Consistency Level of Multi-Spectral Fluctuation Pattern

pp. 3758-3762(5)

Authors: *Melinda, .; Tamsir, Agus Santoso; Basari, .; Mahatidana, P; Gunawan, Dadang*

S A Design and Implementation of the Real Time 4-Channel Image Processing System for Vehicle Using the Smart Phone

pp. 3763-3766(4)

Author: *Kim, Woongsik*

S Barrier Factors That Influence Satisfaction of E-Learning: A Literature Study

pp. 3767-3771(5)

Author: *Astri, Lola Yorita*

S Identifying the Causal Structure from the Correlation Matrix

pp. 3772-3776(5)

Author: *Kruger, Jan W*

S Improvement of Software-Assisted Learning on Management Thinking Skills

pp. 3777-3781(5)

Authors: *Sabarguna, Boy Subirosa; Kekalih, Aria*

S Emotional Response of Internet Gaming Disorder Gamer Among Taiwan College Students

pp. 3782-3785(4)

Authors: *Hsieh, Dai-Ling; Hsiao, Tzu-Chien*

S Front-End and Back-End Application Development for uBeacon Smart Campus System

pp. 3786-3791(6)

Author: *Husni, Emir*

S Nurse Scheduling Problem Using Backtracking
pp. 3792-3795(4)
Authors: *Ko, Young-Woong; Kim, Dong-Hoi; Uhm, Saangyong; Kim, Jin*

S Metabolic Pathway Reconstruction of Fungal Genomes
pp. 3796-3801(6)
Authors: *Aplop, Faizah; Butler, Greg*

S A Generalized Strategy for Parallelization of Non-Serial Polyadic
Dynamic Programming on Multicore and Manycore
pp. 3802-3807(6)
Authors: *Diwan, Tausif; Sathe, Shailesh R*

S Social Network and Sentiment Analysis for Social Customer
Relationship Management in Indonesia Banking Sector
pp. 3808-3812(5)
Authors: *Alamsyah, Andry; Indraswari, Anindia Aulia*

S Top Brand Alternative Measurement Based on Consumer Network
Activity
pp. 3813-3816(4)
Authors: *Alamsyah, Andry; Sofyan, Endang; Aprilliyanti, Bebyta Eka; Aini, Viva Nur*



Correlation Between Self-Reliance of Its Patients and Their Medication Adherence in Magelang Pulmonary Health Center, Indonesia

Meidiana Dwidiyanti^{1,*} and Chriswardani Suryawati²

¹Lecturer in Master Program of Nursing, Faculty of Medicine, Diponegoro University, Semarang, 50195, Indonesia

²Lecturer in Master Program of Public Health, Faculty of Public Health, Diponegoro University, Semarang, 50195, Indonesia

Background: The current programs for controlling pulmonary tuberculosis have not been able to increase the level of self-care of patients to medication; while in fact it brings more advantages to patients. The purpose of this study was to determine the correlation between the level of self-reliance and medication adherence of pulmonary Tuberculosis patients. **Method:** This study represented a quantitative research design with cross sectional approach and involved 30 patients. The questionnaires used were, self-reliance health card, medication knowledge scale, and medication adherence scale. **Results:** The patients who were already self-reliant were 10 (33%), started to be self-reliant were 15 (50%) and dependent were 5 (5%). The patients with high level of knowledge were 27%, with medium level of knowledge were 20 (67%) and with low level of knowledge were 2 (6%). The patients who had high level of adherence were 23 (77%) and who had moderate level of adherence were 7 (23%). A correlation test was in the form of interval scale and all data were abnormally distributed. The Spearman rank correlation test obtained a significance level of 0.071 with p value > 0.05 . **Conclusion:** There was no correlation between the level of self-reliance patients and the adherence to medication. It was because at the stage of the second meeting, the families were not involved in the treatment program of the patients.

Keywords: Self-Reliance, Medication Adherence, Tuberculosis.

1. INTRODUCTION

Tuberculosis is the second-leading cause of death from infectious diseases globally, with nine million people infected and 1.5 million deaths in 2013.¹ Tuberculosis (TB) requires long medication regimens.² Treatment for drug-susceptible TB consists of a two-month intensive phase of daily medication followed by a four-month continuation phase of varying frequency, while treatment for multidrug-resistant TB (MDR-TB) can take substantially longer.³ Low adherence to anti-TB medication is common and can lead to death, drug resistance, continued transmission in the community, and increased health system costs.^{4,5}

Medication adherence is critical in Tuberculosis (TB) treatment success, but patients did not always take medication as prescribed and direct observation of treatment began to be considered as a strategy for enforcing medication adherence for the duration of a treatment regimen.⁶ Previous quantitative studies in a systematic review of qualitative research found that reasons for default generally fit into 8 specific categories: “organization of treatment and care; interpretations of illness and wellness; the financial burden of treatment; knowledge, attitudes, and beliefs

about treatment; law and immigration; personal characteristics and adherence behavior; side effects; and family, community, and household support.”^{7,8}

Tuberculosis (TB) treatment non-adherence is one of challenging conditions, because its risk of prolonged disease transmission, treatment failure and occurrence of drug resistance. Studies show that a number of factors are influencing TB-treatment adherence. Among these factors, knowledge about TB and its treatment, distance to nearest health facility, perceived stigma, perception about disease and its treatment, psychological distress, change of residential place, and economic status are some.^{9,10} In order to decrease non-adherence level, various interventions designed and implemented across the world.¹⁰ For instance, an intervention that carried out based on enhanced TB adherence model, which focused on patient and professional empowerment, proved to positively impact TB treatment adherence.

Good adherence to tuberculosis (TB) treatment is crucial to cure patients, to limit the development of drug resistance and to reduce TB transmission in the community.¹¹ The World Health Organization recommends directly observed therapy to promote adherence, where a pre-assigned treatment supporter watches each patient take his/her daily medication. There are many ways

*Author to whom correspondence should be addressed.

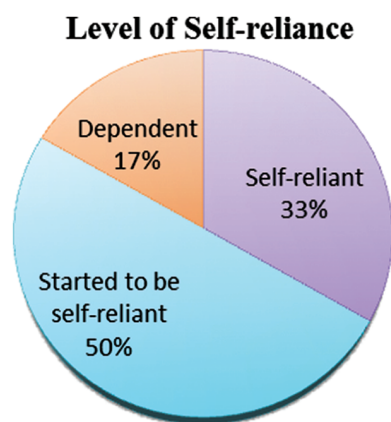


Fig. 1. Patients' level of self-reliance ($n = 30$).

to assess patient adherence, such as pharmacy record review and pill counts, but they are not feasible for routine clinical practice because they require excessive physician or patient time and resources.¹²

The current programs for controlling pulmonary TB have not been able to increase the level of self-reliance of the patients to undergo medication. While in fact, patients will have many advantages when they are being self-reliant. For examples, patients will feel satisfied with the treatment as they actively make decisions about their treatment. In addition, they also will find it easier to avoid stress and embarrassment, and participate in the health care system existing within the environment. Moreover, the government will also receive assistance as so far there is limited number of health workers. Therefore, active participation from the patients is really required.¹³

Self-reliance of the patients to do self-care is mostly affected by self-awareness and attention to oneself. It is influenced by the ability of the patients in all facets of their life including social, psychological, spiritual and physical aspects.¹⁴ A good self-awareness will be reflected on the level of adherence to medication. It is therefore important to know whether there is a correlation between the level of self-reliance that the patients achieve and their adherence to medication.

The study aimed to determine the relationship between self-reliance of TB patients and medication adherence. The specific goal are to know the level of self-reliance of TB patients, to know the level of knowledge about medication adherence of TB patients, to know the level of knowledge about treatment of TB patients, and to analyze the relationship between the level of self-reliance of TB patients and their adherence to medication.

2. METHOD

Patients were recruited through the pulmonary health center of Magelang in the period of June–July 2016. Patients were eligible to participate in the study if they were diagnosed as having tuberculosis, undergoing medicine treatment, and had signed informed consent. Patients with insufficient of understanding or lack of communication, having psychiatric problems and refusing to involve in the study were excluded. Of the 62 patients who met the criteria, 30 agreed to participate in the study. The sampling method used was purposive sampling which was based on some criteria developed by the researchers.

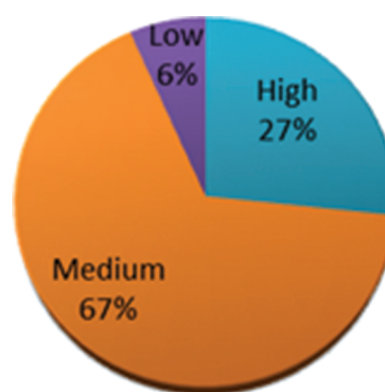


Fig. 2. Level of knowledge of TB treatment ($n = 30$).

The study used a cross-sectional questionnaire survey design. Questionnaires were completed by the participants in pulmonary health center of Magelang. Participants were informed that there were no right or wrong answers and that their answers would be kept confidential. Participation was voluntary and no incentive was offered to take part in the study. After signing an informed consent form, participants were asked to complete a questionnaire including basic demographic questions, as well as the scales below. Each participant took 15–20 min to complete the questionnaire.

The data collection was accomplished through the use of 3 separate questionnaires.

- (1) Self-reliant health card had score validity test more than r table, $r > 0.361$
- (2) Medication knowledge scale had score validity have score 0,361
- (3) medication adherence had score 0.361. This score showed that instrument was valid.

Data were double-entered for verification using Statistical Package for the Social Sciences (SPSS) 20.0 for windows statistical software. Descriptive statistics were used to establish the frequency, range, mean and standard deviation (SD) of demographic and illness characteristics of the sample. Spearman rank correlation was undertaken to examine relationships between self-reliance and medication adherence. Before the correlation test was performed, the normality of the data was tested using the Kolmogorov-Smirnov test.

The study was approved by the Medicine Research Ethics Committee of Diponegoro University. Participants were given detailed information about study procedures and written consent was obtained. All participation in this study was voluntary and participants were allowed to withdraw from the project during the period of the study without penalty.

3. RESULTS

3.1. Level of Self-Reliance of the Patients

The results of Self-reliance showed that 10 patients (33%) were self-reliant and only 15 (50%) were starting to be self-reliant and 5 patients (17%) were still dependent.

3.2. Level of Knowledge of TB Treatment

The results of data analysis on knowledge of TB treatment indicated that 20 patients (67%) had moderate knowledge, 8 (27%)

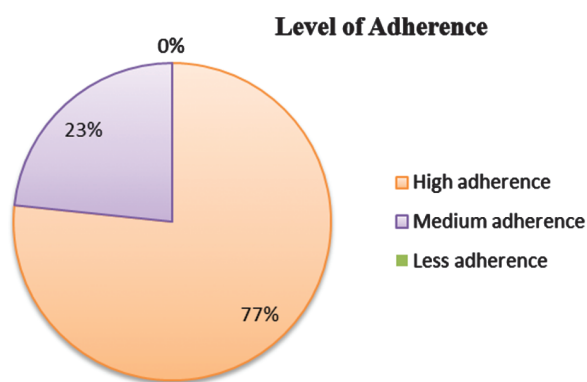


Fig. 3. Level of medication adherence ($n = 30$).

had a high level of knowledge and only 2 (6%) had low knowledge.

The results of adherence to medication indicated that 23 patients (77%) had high level of adherence, and 7 patients (23%) had moderate level of adherence.

3.3. Level of Adherence to Medication

The level of self-reliance and medication adherence showed a significant level of 0.00. This showed the p value < 0.05 , indicating abnormal data distribution. This showed that p value > 0.05 , indicating no relationship between the level of self-reliance and medication adherence of TB patients.

4. DISCUSSION

The findings of the present study on knowledge of TB treatment showed that 67% had moderate knowledge, 27% had a high level of knowledge and 6% had low level of TB treatment knowledge. Other study findings on knowledge of TB treatment showed that 49% had average level of TB treatment knowledge while only 17% had high level of knowledge. This demonstrated that the level of TB treatment knowledge was medium to low. This was not the picture expected in a context where most of the respondents had secondary level of education as education is perceived to enhance receptivity of information given. There is need to evaluate the teaching strategies used to determine how they influence assimilation of information given to tuberculosis patients.¹⁵ Orem stated that if an individual lacks of knowledge about self-care, he/she would also lack of self-care practices; in this case, lack of TB treatment knowledge would lead to non-adherence with TB treatment.¹⁶ The other study showed different findings with the current study, which found no direct relationship between knowledge and adherence.¹⁷ They concluded that major factors contributing to high rates of defaulting were lack of family support, inadequate knowledge about treatment and medication side effects. They also argued that default reduction maybe successful if control programs consider these factors.

Adherence was measured as a continuous from adherence to non-adherence. Most of the respondents 77% had high level of adherence and 23% respondents had moderate level of adherence. There were varying levels of adherence. A retrospective study found that there were varying degrees of non-adherence in 24% of the patients.¹⁸ Other studies examined the adherence to appointments and medication taking. They found that appointment keeping ranged from 81% on the first visit to 59% by the

sixth visit. Medication adherence dropped from 89% in the first month to 64% at six months.¹⁵

The present study found 23% had moderate level of adherence of the respondents did not comply with TB treatment. This indicated that they are likely to have treatment failure or treatment resistance leading to further spread of the disease. Tuberculosis is a droplet infectious disease, where very high treatment adherence is the goal. The global targets for WHO are 70% for their therapy progresses and are generally not infectious after one month of appropriate treatment.^{19,20} Left untreated, each person with active tuberculosis will infect on average between 10 and 5 persons every year.¹⁹ To reverse this situation, there is need for adherence TB treatment. The high rate of patient non-adherence has been identified as a major factor contributing to treatment failure; consequently, an extensive number of infectious people are spreading the disease rapidly in the global village.¹⁵

The present study showed that as many as 10 patients were already self-reliant on their medication, 15 patients were starting to be self-reliant and 5 were still dependent. In case of medication, most patients had high levels of adherence as many as 23, and 6 patients showed moderate level of adherence. The correlation test showed no relationship between the level of self-reliant and medication adherence. This result is in contrary to the existing theories. Adherence to medication will reflect in an active role of TB patients in their self-management and interactions with health care providers. High level of adherence will help the success of TB treatment and minimize the risk of drug resistance.²¹

In this study, self-reliance was measured at the second meeting in which the patients were still self-reliant without any full support of the family. In addition, the level of self-reliance at the second meeting was not fully developed. The majority of them were just starting to be self-reliant. This is just the opposite with the result of the high adherence. In addition to family support, the level of adherence is also influenced by some aspects: trustworthiness, attitudes, cultures, norms, emotional changes, and depression.²²

The present study was subject to a number of limitations. First, the data were collected from only one place and therefore the results might not generalize to other healthcare settings. Second limitations were the small sample size and the nature of the safety performance data.

5. CONCLUSION

There was no significant correlation between the patients' level of self-reliance and the adherence to medication. It was because at the stage of the second meeting, the families were not involved in the treatment program of the patients.

The trend of an increased prevalence of TB leading to increased incidence of infection needs to be broken in Indonesia and over world. There is great need to understand the problem of non-adherence with TB treatment. Adherence with TB treatment is one of the great determinant of TB control. To improve adherence, there is need to adopt a very systematic and comprehensive view of patient adherence. The Study revealed a very important aspect that self-reliance is not a direct determinant of adherence.

Acknowledgments: The authors acknowledge the contribution of all study participants and data collectors for their tolerance and cooperation. We also would like to thank our colleagues at

the department of nursing Diponegoro University, for their support throughout the study.

References and Notes

1. World Health Organization, Global Tuberculosis Report, (2014). Available from http://apps.who.int/iris/bitstream/10665/137094/1/9789241564809_eng.pdf?ua=1.
2. T. R. Frieden, editor. Toman's tuberculosis: Case detection, treatment, and monitoring—Questions and answers, 2nd ed. World Health Organization, Geneva (2004).
3. Treatment of tuberculosis guidelines, 4th ed. World Health Organization, Geneva (2010).
4. M. F. Franke, S. C. Appleton, J. Bayona, F. Arteaga, E. Palacios, K. Llaro, et al., *Clin. Infect. Dis.* 46, 1844 (2008).
5. A. Toczek, H. Cox, P. du Cros, G. Cooke, and N. Ford, *Int. J. Tuberc. Lung Dis.* 17, 299 (2013).
6. X. Yin, X. Tu, Y. Tong, R. Yang, Y. Wang, et al., *PLoS One* 7, e50328 (2012).
7. S. A. Munro, S. A. Lewin, H. J. Smith, M. E. Engel, A. Fretheim, and J. Volmink, *PLoS Med.* 4, e238 (2007).
8. B. Lackey, C. Seas, P. Van der Stuyft, and L. Otero, *Peru. PLoS One* 10, e0128541 (2015).
9. P. Nahid, L. G. Jarlsberg, I. Rudoy, Jong BC De, A. Unger, L. M. Kawamura, et al., *BMC Infect. Dis.* 11, 1 (2011).
10. H. H. Tola, D. Shojaeizadeh, A. Tol, G. Garmaroudi, M. S. Yekaninejad, A. Kebede, et al., *PLoS One* 11, e0155147 (2016).
11. Nackers, Fabienne, et al., *Pone Journal* (2012).
12. S. R. Hahn, J. Park, E. P. Skinner, K. S. Yu-Isenberg, M. B. Weaver, et al., *Curr. Med. Res. Opin.* 24, 2127 (2008).
13. S. Supardi and M. Notosiswoyo, *Magazine Pharmaceutical Sciences II* 134 (2005).
14. J. G. Alspach, The Patient's Capacity for Self Care, Critical Care Nurse, United States (2011).
15. P. Mweemba, C. Haruzivishe, S. Siziya, P. J. Chipimo, K. Cristenson, and E. Johansson, *Medical Journal of Zambia* 35 (2008).
16. D. E. Orem, Nursing concepts of practice (4th ed.), Mosby Year Book, St. Louis (1990).
17. B. Teckle, D. H. Mariam, and A. Ali, *Int. J. Tubercle Lung Disease* 6, 573 (2002).
18. S. C. Pang, R. H. Harrison, J. Brearly, V. Jegathesan, and A. S. Clayton, *International Journal of Tuberculosis and Lung Disease* 2.
19. World Health Organisation, facts sheets, (2000). Tuberculosis, Available from <http://www.who.int/inf-fs/en/fact/104.html>.
20. World Health Organisation, What is DOTS? Tuberculosis, strategy and operations, monitoring and evaluation, (2003). Available from: <http://www.who.int/gtb/dots/whatisdots.html>.
21. P. Y. Kulkarni, et al., *Annals of Medical and Health Sciences Research* 3, 67 (2013).
22. L. R. Martin, et al., *Therapeutics and Clinical Risk Management* 1, 189 (2005).

Received: 29 September 2016. Revised/Accepted: 22 December 2016.