

### **Riwayat Korespondensi Karya Ilmiah Syarat Lektor Kepala**

Penulis Koresponden : Aris Ismanto

Judul Artikel : Heavy metal contamination in the marine environment of Pekalongan, Indonesia: spatial distribution and hydrodynamic modeling.

Terbit (Issue) : Volume 33, Issue 4 pages 37-46

Nama Jurnal : Environmental Quality Management

Alamat Situs artikel : <https://onlinelibrary.wiley.com/doi/10.1002/tqem.21978>

Terindeks Scopus : Q3 (Management, monitoring, Policy and Law)

SJR : 0.32

No	Aktivitas Korespondensi	Waktu	Halaman
1.	Submission	7 Januari 2023	2
2.	Under Review	17 januari 2023	8
3.	Review Submission	8 Februari 2023	14
4.	Acceptance Letter	15 Februari 2023	15
5.	Production Process	22 Februari 2023	17
6	Online Version	10 maret 2023	18

## Manuscript submitted to Environmental Quality Management

Environmental Quality Management <no-reply@atyponrex.com>

Sat 1/7/2023 12:47 PM

To: Aris Ismanto <aris109@lecturer.undip.ac.id>

Dear aris ismanto,

Your manuscript entitled "Spatial distribution and hydrodynamics simulations of heavy metal contamination in marine environment of Pekalongan, Indonesia." has been successfully submitted online and is being delivered to the Editorial Office of *Environmental Quality Management* for consideration.

You will receive a follow-up email with further instructions from our electronic editorial office platform, ScholarOne Manuscripts, typically within one business day. That message will confirm that the Editorial Office has received your submission and will provide your Manuscript ID.

Thank you for submitting your manuscript to *Environmental Quality Management*

Sincerely,  
The Editorial Staff at Environmental Quality Management

By submitting a manuscript to or reviewing for this publication, your name, email address, and affiliation, and other contact details the publication might require, will be used for the regular operations of the publication, including, when necessary, sharing with the publisher (Wiley) and partners for production and publication. The publication and the publisher recognize the importance of protecting the personal information collected from users in the operation of these services and have practices in place to ensure that steps are taken to maintain the security, integrity, and privacy of the personal data collected and processed. You can learn more by reading our [data protection policy](#). In case you don't want to be contacted by this publication again, please send an email to [EQM.office@wiley.com](mailto:EQM.office@wiley.com).

## Environmental Quality Management

[JOURNAL HOME](#)

[AUTHOR GUIDELINES](#)

[EDITORIAL CONTACT](#)

### Submission Overview

#### Initial Submission

[Show versions](#)


 [Review Decision Letter](#)

This manuscript has been submitted to the editorial office for review. Changes cannot be made during editorial review, but you can view the information and files you submitted, below.

Article Type	Research Article		
Title	Spatial distribution and hydrodynamics simulations of heavy metal contamination in marine environment of Pekalongan, Indonesia.		
Manuscript Files	Name	Type of File	Size
	<a href="#">Manuscript Heavy Metals Pekalongan (Loji and Banger river)(1).docx</a>	Main Document - MS Word	59.3 KB
	<a href="#">Figures.docx</a>	Figure	4.3 MB
	<a href="#">Table Figure.docx</a>	Table	29.3 KB
	<a href="#">Supplementary Materials (3).docx</a>	Supplementary Material for Review	89.7 KB
	<a href="#">Cover letterHM.docx</a>	Cover letter / Comments	21.1 KB
	<a href="#">Graphical Abstract.docx</a>	Cover Image	1.5 MB

## Abstract

Pollution in Pekalongan waters is one of the environmental problems caused by the industrial city. Batik industry is the most common economic activity among its population in Pekalongan City, Indonesia. Batik industry uses a lot of water and generates a lot of effluent because it involves an aqueous process when dyeing fabric. This wastewater, which contains heavy metal contaminants like hexavalent chromium (Cr<sup>6+</sup>), copper (Cu), and lead (Pb), generally finds its way to rivers that run across Pekalongan. The contamination level, spatial distribution, and transport simulation of copper (Cu) and chromium (Cr) in water were investigated in the Loji rivers and Banger rivers located in Pekalongan, Indonesia. A two-dimensional hydrodynamic model was constructed to simulate heavy metal concentrations in marine environment of Pekalongan City, Indonesia. The model's kinetic processes comprised air exchange, transportation, and deposition. Based on the Indonesia regulation, the Cu concentration was below the standard threshold, but for Cr especially in the river and the mouth river exceeded above the threshold level. The Cu concentration are below 0,002 mg/l in both rivers. Meanwhile, Cr concentration in the both river is around 0.0298 mg/l until 0.0553mg/l and the highest is 0,1056 mg/l near the mouth of Banger River. The highest concentration of Cr in the mouth river of Banger is because water freely flows. As a result, the concentration is not significantly different from that at the river's mouth. The numerical Cu and Cr calculation model developed in this study, as well as the evaluation results, have significant research implications for heavy metal pollution prevention and control.

Authors	Name	Email	Country/Loca
	Aris Ismanto <sup>1, 2, 3</sup> Corresponding Author Submitting Author  <a href="#">0000-0003-3306-2032</a>	aris109@lecturer.undip.ac.id	Indonesia
	Sugeng Widada <sup>1, 2</sup>	sugengwidada@lecturer.undip.ac.id	Indonesia
	Warsito Atmodjo <sup>1</sup>	warsitoatmodjo@lecturer.undip.ac.id	Indonesia
	Alfi Satriadi <sup>1</sup>	alfisatriadi@lecturer.undip.ac.id	Indonesia
	Hendry Siagian <sup>4</sup>	henryropinus@gmail.com	Indonesia
	Novia Safinatunnajah <sup>1</sup>	finanovia34@gmail.com	Indonesia
	Tony Hadibarata <sup>5</sup>	hadibarata@curtin.edu.my	Malaysia

Affiliations	
We will use the best match from our database to determine if your manuscript is eligible for special benefits. Matched organizations are for internal purposes and will not be published.	<ol style="list-style-type: none"> <li>Department of Oceanography, Faculty of Fisheries and Marine Science, Universitas Diponegoro, Semarang, Indonesia, 50275 <b>Matched organization</b> Universitas Diponegoro Departemen Oseanografi SEMARANG, Indonesia</li> <li>Center for Coastal Disaster Mitigation and Rehabilitation Studies, Universitas Diponegoro, Semarang Indonesia, 50275 <b>Matched organization</b> Universitas Diponegoro SEMARANG, Indonesia</li> <li>Center for Integrated Coastal Zone Management (ICZM Center), Universitas Diponegoro, Indonesia, 50275 <b>Matched organization</b> Universitas Diponegoro SEMARANG, Indonesia</li> </ol>

4. Coastal and Marine Monitoring Section,  
Environmental Division, Freeport Indonesia, Timika,  
Indonesia

**Matched organization**  
Freeport Indonesia PT  
SOUTH JAKARTA, Indonesia

5. Department of Environmental Engineering, Faculty of  
Engineering and Science, Curtin University Malaysia,  
CDT 250, 98009, Miri, Malaysia

**Matched organization**  
Curtin University Malaysia Faculty of Engineering and Science  
MIRI, Malaysia

### Additional Information

#### Funders

besides APBN Faculty of Fisheries and Marine Sciences, Universitas  
Diponegoro number 008/UN.7.5.10.2/PP/2020.

World Class Professor program managed by the Indonesian Ministry of  
Education, Culture, Research and Technology - Directorate General of  
Higher Education, Research and Technology Number  
2817/E4.1/KK.04.05/2021

#### Keywords

Wastewater

#### Manuscript Section

Other

#### Is this submission for a special issue?

Yes, this is for a special issue

Developments in drinking water and wastewater treatment in Emerging  
Countries [SI-2022-011092]

#### Has this manuscript been submitted previously to this journal?

No, it wasn't submitted previously

#### Suggested Reviewers

Felicity Roddick  
roddickfeli@gmail.com  
RMIT University Chemical and Environmental Engineering  
Ingvar Sundh  
ingvarsundh@gmail.com  
Swedish University of Agricultural Sciences  
Xiangui Lin  
xianguilin@gmail.com

Institute of Soil Science Chinese Academy of Sciences  
Diego Moldes  
diegomoldes@gmail.com  
Department of Chemical Engineering, University of Vigo

**Opposed Reviewers**  
*No response provided*

**Cover letter / Comments**  
Yes, I'd like to add a cover letter or comments  
(see [Manuscript Files](#))

### History

<b>Submitted On</b>	7 January 2023 by aris ismanto
	▼ <a href="#">Hide this version history</a>
	7 January 2023 by aris ismanto
	5 January 2023 by aris ismanto <i>Submitted</i>
	5 January 2023 by aris ismanto
	4 January 2023 by aris ismanto <i>Submitted</i>
	4 January 2023 by aris ismanto
	3 January 2023 by aris ismanto
<b>Submission Started</b>	3 January 2023 by aris ismanto

## Decision letter (Initial Submission) ✕

**Environmental Quality Management - Decision on Manuscript ID EQM-2023-01-0023 [email ref: DL-SW-3-a]**

---

**From:** ayukristanti@gmail.com  
**To:** aris109@lecturer.undip.ac.id

17-Jan-2023

Dear Aris Ismanto:

Manuscript ID EQM-2023-01-0023 entitled "Spatial distribution and hydrodynamics simulations of heavy metal contamination in marine environment of Pekalongan, Indonesia," which you submitted to Environmental Quality Management, has been reviewed. The comments of the reviewer(s) are included at the bottom of this letter.

The reviewer(s) have recommended some revisions to your manuscript. Therefore, I invite you to respond to the reviewer(s)' comments and revise your manuscript.

Our journal is currently transitioning to Wiley's Research Exchange submission portal. Please read these instructions carefully.

Return to Wiley's Research Exchange submission portal to submit your revision:

<https://wiley.atyponrex.com/submissionBoard/1/c64de8b0-1ae9-4870-a38f-b7166354d66e/current>

OR

Return to the ScholarOne submission portal to submit your revision:

\*\*\* PLEASE NOTE: This is a two-step process. After clicking on the link, you will be directed to a webpage to confirm. \*\*\*

[https://mc.manuscriptcentral.com/eqm?URL\\_MASK=123a8c7bfb434f81b3554dea2d5a7c3a](https://mc.manuscriptcentral.com/eqm?URL_MASK=123a8c7bfb434f81b3554dea2d5a7c3a)

Once again, thank you for submitting your manuscript to Environmental Quality Management and I look forward to receiving your revision.

Sincerely,

Dr. Risky Ayu Kristanti  
Associate Editor, Environmental Quality Management  
ayukristanti@gmail.com

Reviewer(s)' Comments to Author:

Reviewer: 1

Comments to the Author

Abstract: Typo in Cr+6; add more conclusion

Keyword: More specific keyword

Introduction: add more strong reasons why the research needs to be conducted



Result discussion: add more comparisons with the previous study. some discussions have no literature review.

Conclusion: add more important data and direction of future study

Reviewer: 2

Comments to the Author

Title: The title should be revised for more accurate and easier understanding.

Abstract: In the abstract, it should have one sentence per each: context and background, motivation, hypothesis, methods, results, and conclusions. In the abstract, please add an indication of the achievements from your study that are relevant to the journal scope. Please be concise - maximum 1-2 lines. The abstract should state briefly the purpose of the research, the principal results, and the major conclusions.

Results and Discussion:

The explanation of the results should be elaborated. What can you conclude from the results? Furthermore, it is advised to compare the result with recent relevant state-of-the-art in the result section. The authors need to present how the results can be validated and verified. In your discussion section, please link your empirical results with a broader and deeper literature review.

Conclusions:

Limitations in the suggested approach should be discussed in the conclusions section. The conclusion section appears to be just a detailed summary of results/observations. All conclusions must be convincing statements on what was found to be novel, and impactful based on the strong support of the data/results/discussion. Please rewrite your conclusion in a paragraph and avoid bullet points

References:

Bibliography style is not always consistent, please check the reference section carefully and correct the inconsistency. Please update and replaces some of the references with a more recent year.

## Environmental Quality Management

[JOURNAL HOME](#)

[AUTHOR GUIDELINES](#)

[EDITORIAL CONTACT](#)

### Submission Overview

#### Revision 1 - Accepted

 [Hide versions](#)

*Revision 1 - Accepted (this version)*

[Initial Submission](#)

Submitted on 7 January 2023

[Learn about what happens](#) once your article has been accepted.

 [Review Decision Letter](#)


Article Type	Research Article			
Title	Heavy metal contamination in the marine environment of Pekalongan, Indonesia: spatial distribution and hydrodynamic modeling.			
Manuscript Files	Name	Type of File	Size	Last Modified
	<a href="#">Manuscript Heavy Metals Pekalongan (Loji and Banger river) R1a.docx</a>	Main Document - MS Word	64.7 KB	Revision 1
	<a href="#">Manuscript Heavy Metals Pekalongan (Loji and</a>	Main Document - Tracked Changes	63.6 KB	Revision 1

Name	Type of File	Size	Last Modified
<a href="#">Banger river) R1.docx</a>			
<a href="#">Figures.docx</a>	Figure	4.3 MB	Initial Submission
<a href="#">Table Figure.docx</a>	Table	29.3 KB	Initial Submission
<a href="#">Supplementary Materials (3).docx</a>	Supplementary Material for Review	89.7 KB	Initial Submission
<a href="#">Reviewer.docx</a>	Author Response	13.5 KB	Revision 1
<a href="#">Graphical Abstract.docx</a>	Cover Image	1.5 MB	Initial Submission

## Abstract

Pollution in Pekalongan waters is one of the environmental problems caused by the industrial city. Batik industry which the most common activity at pekalongan uses a lot of water and generates a lot of effluent because it involves an aqueous process when dyeing fabric. This wastewater, contains heavy metal contaminants like hexavalent chromium (Cr+6), copper (Cu), and lead (Pb), generally finds its way to rivers that run across Pekalongan. The contamination level, spatial distribution, and transport simulation of copper (Cu) and chromium (Cr) in water were investigated in the Loji rivers and Banger rivers located in Pekalongan, Indonesia. A two-dimensional hydrodynamic model was constructed to simulate heavy metal concentrations in marine environment of Pekalongan City, Indonesia. The model's kinetic processes comprised air exchange, transportation, and deposition. Thus, Cu concentrations were below Indonesia's threshold, but Cr, especially in the river and outlet river, exceeded it. Both rivers have 0.002 mg/l Cu. Since water freely flows at Banger River Estuary, Cr concentration reach the highest in both rivers 0.1056 mg/l. The evaluation findings and the numerical Cu and Cr calculation model created in this work have important research ramifications for the prevention and control of heavy metal pollution.

## Authors

Name	Email	Country/Loca
Aris Ismanto <sup>1, 2, 3</sup> Corresponding Author Submitting Author	aris109@lecturer.undip.ac.id	Indonesia
 <a href="#">0000-0003-3306-2032</a>		

Name	Email	Country/Loca
Tony Hadibarata <sup>1, 5</sup>	hadibarata@curtin.edu.my	Malaysia
Sugeng Widada <sup>1, 2</sup>	sugengwidada@lecturer.undip.ac.id	Indonesia
Warsito Atmodjo <sup>1</sup>	warsitoatmodjo@lecturer.undip.ac.id	Indonesia
Alfi Satriadi <sup>1</sup>	alfisatriadi@lecturer.undip.ac.id	Indonesia
Hendry Siagian <sup>4</sup>	siagianhenry@outlook.com	Indonesia
Novia Safinatunnajah <sup>1</sup>	finanovia34@gmail.com	Indonesia

## Affiliations

We will use the best match from our database to determine if your manuscript is eligible for special benefits. Matched organizations are for internal purposes and will not be published.

1. Department of Oceanography, Faculty of Fisheries and Marine Science, Universitas Diponegoro, Semarang, Indonesia, 50275

**Matched organization**

Universitas Diponegoro Departemen Oseanografi  
SEMARANG, Indonesia

2. Center for Coastal Disaster Mitigation and Rehabilitation Studies, Universitas Diponegoro, Semarang Indonesia, 50275

**Matched organization**

Universitas Diponegoro  
SEMARANG, Indonesia

3. Center for Integrated Coastal Zone Management (ICZM Center), Universitas Diponegoro, Indonesia, 50275

**Matched organization**

Universitas Diponegoro  
SEMARANG, Indonesia

4. Coastal and Marine Monitoring Section, Environmental Division, Freeport Indonesia, Timika, Indonesia

**Matched organization**

Freeport Indonesia PT  
SOUTH JAKARTA, Indonesia

5. Department of Environmental Engineering, Faculty of Engineering and Science, Curtin University Malaysia, CDT 250, 98009, Miri, Malaysia

**Matched organization**

Curtin University Malaysia Faculty of Engineering and Science  
MIRI, Malaysia

### Additional Information

#### Is your data available?

The data that support the findings of this study are available on request from the corresponding author. The data are not publicly available due to privacy or ethical restrictions.

#### Funders

besides APBN Faculty of Fisheries and Marine Sciences, Universitas Diponegoro number 008/UN.7.5.10.2/PP/2020.

World Class Professor program managed by the Indonesian Ministry of Education, Culture, Research and Technology - Directorate General of Higher Education, Research and Technology Number 2817/E4.1/KK.04.05/2021

#### Keywords

Wastewater; Diffuse pollution control

#### Manuscript Section

Other

#### Is this submission for a special issue?

Yes, this is for a special issue

Developments in drinking water and wastewater treatment in Emerging Countries [SI-2022-011092]

#### Cover letter / Comments

No, I don't have additional comments

### History

Accepted On

15 February 2023 by Editorial Office

## Revised manuscript submitted to Environmental Quality Management

Environmental Quality Management <no-reply@atyponrex.com>

Wed 2/8/2023 8:24 PM

To: Aris Ismanto <aris109@lecturer.undip.ac.id>

Dear aris ismanto,

Your revised manuscript entitled "Heavy metal contamination in the marine environment of Pekalongan, Indonesia: spatial distribution and hydrodynamic modeling." has been successfully submitted online and is being delivered to the Editorial Office of *Environmental Quality Management* for consideration.

Further information about your submission will come via email from our electronic editorial office platform, ScholarOne Manuscripts. You may review your submission using the following link:

<https://submission.wiley.com/submissionBoard/1/43de11bc-175d-46a7-b6f7-1150a4788ac0>

Thank you for your manuscript submission.

Sincerely,  
The Editorial Staff at:  
Environmental Quality Management  
[EQM.office@wiley.com](mailto:EQM.office@wiley.com)

By submitting a manuscript to or reviewing for this publication, your name, email address, and affiliation, and other contact details the publication might require, will be used for the regular operations of the publication, including, when necessary, sharing with the publisher (Wiley) and partners for production and publication. The publication and the publisher recognize the importance of protecting the personal information collected from users in the operation of these services and have practices in place to ensure that steps are taken to maintain the security, integrity, and privacy of the personal data collected and processed. You can learn more by reading our [data protection policy](#). In case you don't want to be contacted by this publication again, please send an email to [EQM.office@wiley.com](mailto:EQM.office@wiley.com).

## Decision letter (Revision 1)



### Environmental Quality Management - Decision on Manuscript ID EQM-2023-01-0023.R1 [email ref: DL-RW-1-a]

**From:** ayukristanti@gmail.com  
**To:** aris109@lecturer.undip.ac.id, hadibarata@curtin.edu.my, sugengwidada@lecturer.undip.ac.id, warsitoatmodjo@lecturer.undip.ac.id, alfisatriadi@lecturer.undip.ac.id, siagianhenry@outlook.com, finanovia34@gmail.com

15-Feb-2023

Dear Aris Ismanto:

It is a pleasure to accept your manuscript entitled "Heavy metal contamination in the marine environment of Pekalongan, Indonesia: spatial distribution and hydrodynamic modeling." in its current form for publication in Environmental Quality Management. The comments of the reviewer(s) who reviewed your manuscript are included at the foot of this letter.

Please note although the manuscript is accepted the files will now be checked to ensure that everything is ready for publication, and you may be contacted if final versions of files for publication are required.

The final version of your article cannot be published until the publisher has received the appropriate signed license agreement. Within the next few days the corresponding author will receive an email from Wiley's Author Services system which will ask them to log in and will present them with the appropriate license for completion.

If your paper contains SUPPORTING INFORMATION:

If you have supporting information for your manuscript, Wiley will host an approved version with the article online. Supporting information will not be copyedited, checked or changed from its original format. If you notice an error, please get in touch with your journal contact as soon as possible. Supporting information materials must be original and not previously published. If previously published, please provide the necessary permissions. You may also display your supporting information on your own or institutional website. Such posting is not subject to the journal's embargo date as specified in the copyright agreement. The responsibility for scientific accuracy and file functionality remains entirely with the author(s). A disclaimer to this effect is displayed with any published supporting information.

Thank you for your fine contribution. On behalf of the Editors of Environmental Quality Management, we look forward to your continued contributions to the Journal.

Sincerely,

Dr. Risky Ayu Kristanti  
Associate Editor, Environmental Quality Management  
ayukristanti@gmail.com

Reviewer(s)' Comments to Author:

Reviewer: 2

Comments to the Author

Revision had been conducted based on reviewers comments

Reviewer: 1

Comments to the Author  
No more comment

This journal accepts artwork submissions for Cover Images. This is an optional service you can use to help increase article exposure and showcase your research. For more information, including artwork guidelines, pricing, and submission details, please visit the Journal Cover Image page at [www.wileyauthors.com/eoo/covers](http://www.wileyauthors.com/eoo/covers).



6/12/24, 1:46 PM

Mall - Aris Ismanto - Outlook

**Information: Production Editor Contact Journal of Journal Environmental Quality Management | Heavy metal contamination in the marine environment of Pekalongan, Indonesia: spatial distribution and hydrodynamic modeling.**

bookin\_wiley@aptaracorp.com <bookin\_wiley@aptaracorp.com>

Wed 2/22/2023 3:21 PM

To: Aris Ismanto <aris109@lecturer.undip.ac.id>

Hi Aris Ismanto,

We are in the process of preparing "Heavy metal contamination in the marine environment of Pekalongan, Indonesia: spatial distribution and hydrodynamic modeling." for publication. Your production editor, Shalini Chawla will support you and your article throughout the process.

Please get in touch with your Production Editor at [schawla@wiley.com](mailto:schawla@wiley.com) if you have any questions.

Sincerely,

Booking-in Team

On behalf of Wiley

Article ID: tqem21978

Article DOI: 10.1002/tqem.21978

Editorial Reference ID: EQM-2023-01-0023.R1

<https://outlook.office.com/mail/id/AAQkAGFIMjdINzVklWQxN2MINDNkOC11OWQ0LTjYTkxMjA5MjVlYQQAQImBcOslWI5JrtMgtI17kDE%3D>

1/1

**Published: Your article is now published online!**

cs-author@wiley.com <cs-author@wiley.com>

Fri 3/10/2023 4:27 PM

To: Aris Ismanto <aris109@lecturer.undip.ac.id>

Dear Aris Ismanto,

Your article Heavy metal contamination in the marine environment of Pekalongan, Indonesia: Spatial distribution and hydrodynamic modeling in Environmental Quality Management has the following publication status: Published Online

To access and share your article, please click the following link to register or log in:

<https://authorservices.wiley.com/index.html#register>

You can also access your published article via this link: <http://doi.org/10.1002/tqem.21978>

If the above link leads to an error page, please try again later. If the link is still not working after 48 hours, contact our Support team for help.

If you need any assistance, please click [here](#) to view our Help section.

Sincerely,

Wiley Author Services

To unsubscribe from these emails, [[\\$UNSUBSCRIBE\\_LINK](#)]click here.

The contents of this email and any attachments are confidential and intended only for the person or entity to whom it is addressed. If you are not the intended recipient, any use, review, distribution, reproduction or any action taken in reliance upon this message is strictly prohibited. If you received this message in error, please immediately notify the sender and permanently delete all copies of the email and any attachments.

[Click here for translations of this disclaimer.](#)

# Heavy metal contamination in the marine environment of Pekalongan, Indonesia: Spatial distribution and hydrodynamic modeling

Aris Ismanto<sup>1,2,3</sup>  | Tony Hadibarata<sup>1,4</sup> | Sugeng Widada<sup>1,2</sup> | Warsito Atmodjo<sup>1</sup> | Alfi Satriadi<sup>1</sup> | Hendry Siagian<sup>5</sup> | Novia Safinatunnajah<sup>1</sup>

<sup>1</sup>Department of Oceanography, Faculty of Fisheries and Marine Science, Universitas Diponegoro, Semarang, Indonesia

<sup>2</sup>Center for Coastal Disaster Mitigation and Rehabilitation Studies, Universitas Diponegoro, Semarang, Indonesia

<sup>3</sup>Center for Integrated Coastal Zone Management (ICZM Center), Universitas Diponegoro, Indonesia

<sup>4</sup>Department of Environmental Engineering, Faculty of Engineering and Science, Curtin University Malaysia, Miri, Malaysia

<sup>5</sup>Coastal and Marine Monitoring Section, Environmental Division, Timika, Freeport Indonesia, Indonesia

## Correspondence

Aris Ismanto, Department of Oceanography, Faculty of Fisheries and Marine Science, Universitas Diponegoro, Semarang 50275, Indonesia.  
Email: aris109@lecturers.undip.ac.id

## Funding information

besides APBN Faculty of Fisheries and Marine Sciences, Universitas Diponegoro, Grant/Award Number: 008/UN.7.5.10.2/PP/2020; World Class Professor program managed by the Indonesian Ministry of Education, Culture, Research and Technology - Directorate General of Higher Education, Research and Technology, Grant/Award Number: 2817/E4.1/KK.04.05/2021; Universitas Diponegoro World Class University-Adjunct Professor Program 2022, Grant/Award Number: 232/UN7.A/HK/IX/2022

## Abstract

Pollution in Pekalongan waters is one of the environmental problems caused by the industrial city. Batik industry, the most common activity at Pekalongan, uses a lot of water and generates a lot of effluent because it involves an aqueous process when dyeing fabric. This wastewater, contains heavy metal contaminants like hexavalent chromium (Cr+6), copper (Cu), and lead (Pb), generally finds its way to rivers that run across Pekalongan. The contamination level, spatial distribution, and transport simulation of copper (Cu) and chromium (Cr) in water were investigated in the Loji and Banger rivers in Pekalongan, Indonesia. A two-dimensional hydrodynamic model was constructed to simulate heavy metal concentrations in marine environment of Pekalongan City, Indonesia. The model's kinetic processes comprised air exchange, transportation, and deposition. Thus, Cu concentrations were below Indonesia's threshold, but Cr, especially in the river and outlet river, exceeded it. Both rivers have 0.002 mg/L Cu. Since water freely flows at Banger River Estuary, Cr concentration reach the highest in both rivers, 0.1056 mg/L. The evaluation findings and the numerical Cu and Cr calculation model created in this work have important research ramifications for preventing and controlling heavy metal pollution.

## KEYWORDS

Banger river, chromium (Cr), copper (Cu), heavy metal, Loji river

## 1 | INTRODUCTION

Pollution is a significant element in the degradation of the marine and coastal environment, as it can harm or kill biological components (biotic) and jeopardize the health of humans who ingest contaminated biota (Vatria, 2010). Whether directly or indirectly, the discharge of waste pollutants into coastal areas such as estuaries would have a

collateral effect due to the ocean's dynamic nature and the available natural food chains (Wulandari et al., 2014). The most severe consequences of pollution carried by a river will be focused in the region directly adjacent to the river's discharge of fresh water (river plume) (Caddy, 2000). Heavy metal contamination is become a major concern in coastal areas, this water pollution is caused by industries, houses (residential), and agriculture, and is a contributing element to

environmental degradation as evidenced by the waste quality standard (Mratihayani & Susilowati, 2013). If the fish obtained are consumed on a regular basis, it will have a negative impact on health because the river is also polluted with heavy metals. Wastewater has a significant impact on human health, causing waterborne diseases such as intestine inflammation, cholera, cystosomiasis, and hepatitis infection. In addition to being a disease transmitter, wastewater contains disease-causing agents (Firmansyah et al., 2020).

Indonesia is currently confronted with a land-based pollution problem that is inextricably linked to a cherished aspect of its culture (Ahmad et al., 2010). One of Indonesia's cultural legacies is a traditional method of fabric production known as Batik. Pekalongan is a city in Indonesia's Central Java Province that is well-known for its batik production. In general, the batik industry in Pekalongan is a cottage industry or small and medium enterprises (SMEs). Batik industrial wastewater is primarily derived from the dyeing process; in addition to high-color substances, industrial wastes batik also contains synthetic ingredients that are soluble or difficult to untangle in thickly coloured liquid waste containing heavy metals (Mratihayani & Susilowati, 2013). The type of dye used in the batik process is synthetic and as a result cannot be degraded by the natural environment. Synthetic dyes are a popular choice since they are less expensive than natural dyes. The ongoing demand for batik has led to the employment of synthetic dyes as part of the coloring process (Handayani et al., 2018). Due to rising environmental awareness and global concerns for pollution management, these dyes, as well as the waxes used in the batik process, have come under investigation. Wastewater is defined as waste products resulting from shear batik, batik-making activities, and batik laundering. Each river and drainage system in Pekalongan has poor water quality, as a result of batik production waste being dumped directly into water bodies such as irrigation or rivers (Santi et al., 2017). From previous research, Cr is toxic heavy metals that have a negative impact on a variety of microorganisms, plants, and animals. Toxic heavy metal exposure in humans can result in serious health injuries and impairments, and even death in certain extremities (Rahman & Singh, 2019). Research by (Syakti et al., 2015) in Segara Anakan rivers and (Amin et al., 2009) in Dumai, Cr and Cu concentration are likely to harm organisms. Copper enters the environment via waste dumps, domestic waste water, combustion of fossil fuels and wastes, wood production, phosphate fertiliser production, and natural sources (ASTDR, 2002; Tchounwou et al., 2012), while the Cu and Cr are derived from the batik dyeing process.

Cr has been implicated in animal genetic mutations and possesses additional carcinogenic properties (Shanker & Venkateswarlu, 2011). Cr are likely to end up in textile effluent as a catalyst in aqueous textile processes, specifically dyeing. Additional research has demonstrated that dyes have the potential to significantly reduce the overall biomass of freshwater aquatic systems (Samchetshabam et al., 2017). Contamination of rivers and other aquatic systems can have a detrimental effect on the socioeconomic stability of communities that rely on these environments for services. In humans, long-term exposure to dyes and their influence on health should be understood. For instance, skin irritation is a frequent health complication associated with prolonged exposure to textile dyes, as are respiratory problems (Hassaan

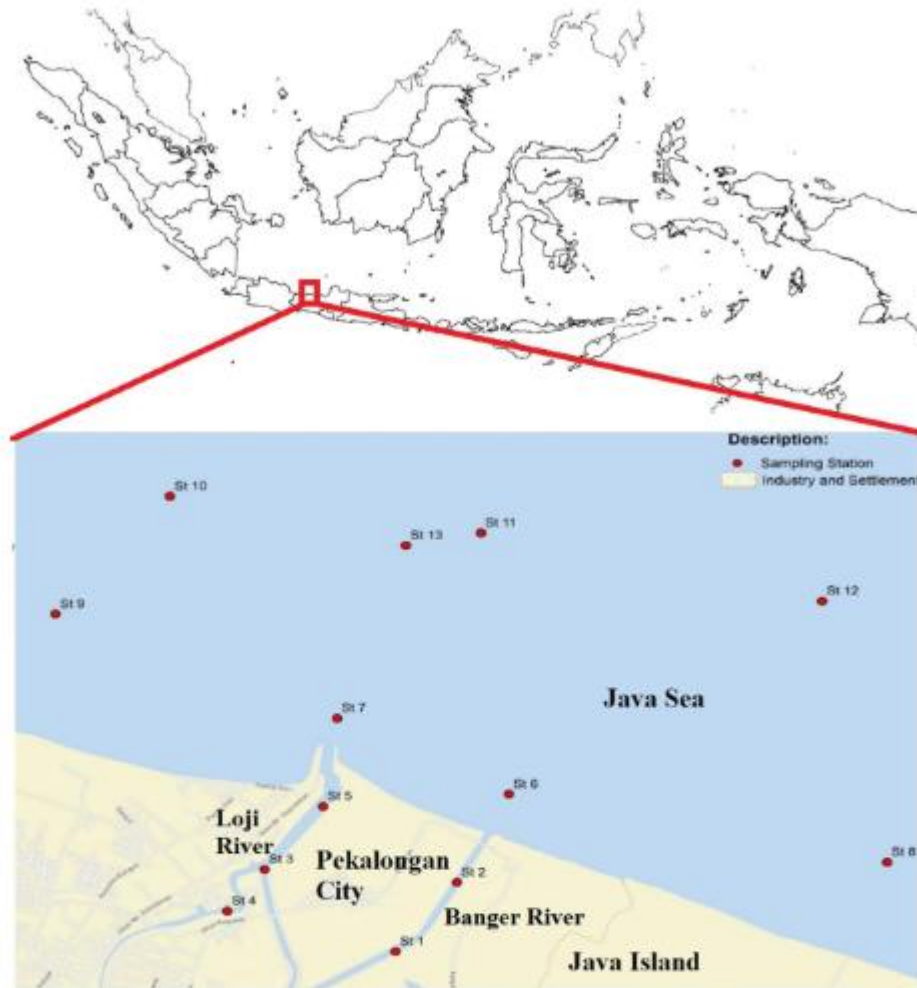
& Nembr, 2017). While it is obvious that textile waste treatment is necessary, not all treatment processes are effective. Metals such as chromium (Cr), copper (Cu), zinc (Zn), and arsenic (As) found in effluent must be considered (Hassaan & Nembr, 2017). Textile manufacture may have heavy metal concentrations from synthetic dyes. Heavy metals, such as Cd, Cu, and Pb, can be found in reactive dyes. Heavy metals like Cu, Cr, Cd, Fe, Pb, Ni, and Zn are found in several dyes used in the textile industry (Oginawati et al., 2022). Excessive copper intake can have negative health consequences associated with deficiency, including dizziness, nausea, and stomach cramps, as well as a chronic effect on organ damage, including kidney and liver disorders (Stern, 2010). Additionally, the majority of textile businesses in Pekalongan are small and medium-sized enterprises (SMEs), which lack the necessary wastewater treatment facilities (Madhav et al., 2018; Samchetshabam et al., 2017). Therefore, this research aimed to study the distribution characteristics, sources and dynamic mechanism of heavy metals in the water and sediments of marine environment of Pekalongan, Central Java, Indonesia.

## 2 | MATERIAL AND METHOD

### 2.1 | Water samples

In June 2020, water samples were collected from thirteen locations for heavy metal sampling. The study area and sample sites are depicted in Exhibit 1. At least two water samples were taken using a Nansen bottle. The water sample was taken in the water column below the surface water (5–15 cm), then placed in a non-translucent sample bottle with a capacity of 2 L and stored in a cooler (cool box), where ice cubes are added to keep the temperature in the cool box close to 0°C. Once all the water samples have been placed in the cool box, the cool box was tightly closed to avoid biological, chemical, or physical changes occurring between data collection and analysis (Fitriyah et al., 2013).

*At least two water samples were taken using a Nansen bottle. The water sample was taken in the water column below the surface water (5–15 cm), then placed in a non-translucent sample bottle with a capacity of 2 L and stored in a cooler (cool box), where ice cubes are added to*



**EXHIBIT 1** Study area and location of sample sites. [Color figure can be viewed at [wileyonlinelibrary.com](http://wileyonlinelibrary.com)]

*keep the temperature in the cool box close to 0°C.*

## 2.2 | Bathymetry

The seabed grading method is intended to obtain bathymetric information. By using an echosounder integrated with GPS, the device used

is the Garmin map 585 s. Depth measurements of sea level by means of echosounder conducted from a motor boat, with a maximum boat speed of five knots (2.5 m/s) and the ship's condition stabilized with strips sounding intervals of 100 m. The coordinates of the measurement points are obtained using a GPS (Global Positioning System) which is integrated with the echosounder. Bathymetric mapping to be carried out is divided into two phases: the preparation phase in the form of secondary data collection, which is a topographic map of the land/coastal and regional bathymetric maps in the form of the Marine Environment Map. Subsequently conducted primary data collection, which includes: measurement sounding and measuring tides.

**EXHIBIT 2** Waste water sample analysis results

Station	Longitude	Latitude	Copper (Cu)* (mg/L)	Chromium (Cr) (mg/L)	Characteristics
St 1	109.691268	-6.877119	<0.002	0.0509	Banger river, fishpond, Mangrove
St 2	109.698129	-6.873144	<0.002	0.0553	Mouth of Banger river, fishpond, Residence
St 3	109.702438	-6.867390	<0.002	0.0419	Batik industries, Boat dock, Residence
St 4	109.688881	-6.866300	<0.002	0.0319	Residence, Food industries, boat dock
St 5	109.686258	-6.869778	<0.002	0.0298	Mouth of Loji river, Port, Fish shelter
St 6	109.693002	-6.861048	<0.002	0.1056	Banger river estuary, Coast of slamaran beach
St 7	109.706112	-6.860040	<0.002	<0.009	Loji river estuary
St 8	109.694006	-6.853703	<0.002	<0.009	East coast, Agriculture
St 9	109.73275	-6.865694	<0.002	<0.009	West coast, fishpond
St 10	109.674159	-6.845015	<0.002	<0.009	High sea
St 11	109.682224	-6.835191	<0.002	0.0103	High sea
St 12	109.704121	-6.838242	<0.002	<0.009	High sea
St 13	109.728166	-6.843929	<0.002	<0.009	High sea

\*Detection limit for Cu Analysis can only detect above 0.002 mg/L.

### 2.3 | Current measurement and analysis

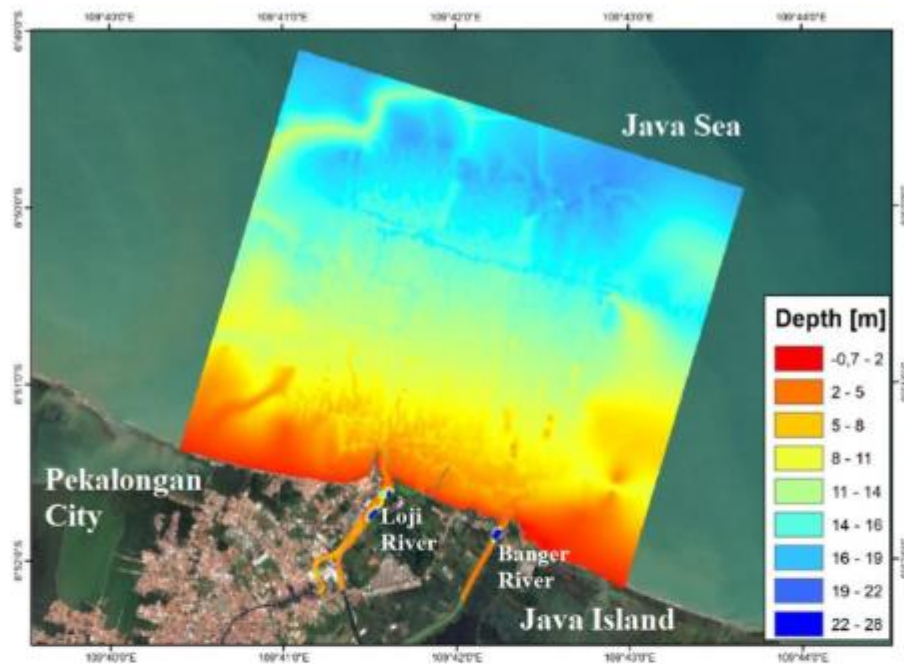
Measurement of water flow data using the Eulerian/Euler method. Retrieval and recording of current measurement data at this location using the ADCP Argonaut SonTek XR with wavelength sensor beam 0.75 MHz and autonomous multicell system. The accuracy of this measurement module is 0.01 cm/s, with a maximum column depth of 15 m measurement, a maximum of 10 cells can be measured, and a minimum layer thickness of 0.8 m with a maximum speed that can be recorded measuring is 6 m/s. This equipment is included with measurements in the dynamic column. Data recording of the speed and direction of the field current is needed to verify the accuracy of the model. Determination of 1 observation station by recording the amount of current for 3 days with a time interval of 10 min. Determination of the location of current measurements using the area sampling method, the method used to determine the sample if the data source is very broad and the sampling is based on a predetermined area (Kowalik & Murty, 1993). Determination of the flow measurement point carried out in a safe area and not a lot of shipping activities. The measuring depth is divided into five active layers, to obtain a variable current velocity profile along the measured water column. Thick layer of each division is 2 m on every layer, including the depth of 15 m, 12 m, 9 m, 6 and 3 m bpl (See Exhibit 2).

*Measurement of water flow data using the Eulerian/Euler*

*method. Retrieval and recording of current measurement data at this location using the ADCP Argonaut SonTek XR with wavelength sensor beam 0.75 MHz and autonomous multicell system*

Field flow data analysis is presented in graphical form so that it is easy to describe. Current data processing is done with the 2 D Numerical Model.

*Field flow data analysis is presented in graphical form so that it is easy to describe. Current data processing is*



**EXHIBIT 3** Variation of water depth in marine environment of Pekalongan. [Color figure can be viewed at [wileyonlinelibrary.com](http://wileyonlinelibrary.com)]

*done with the 2 D Numerical Mode*

#### 2.4 | Recording of water elevation

Tide measurements were taken to ascertain tidal characteristics, allowing for the determination of sea level elevation, tide type, and tidal components via the Virtuose single channel logger RBR. Following that, the tide data were analyzed to determine the tide type, mean sea level (MSL), and water level (maximal, minimum, mean). The MSL is determined using harmonic component analysis of tidal data. This analysis includes calculating the tidal harmonic constant value using the admiralty method and determining the tide type using Formzahl numbers. The Least Squares method is used to calculate the value. The analysis will produce tidal components that will become variables in the mathematical modeling of the current (Ongkosongo & Suyarso, 1989).

*Tide measurements were taken to ascertain tidal*

*characteristics, allowing for the determination of sea level elevation, tide type, and tidal components via the Virtuose single channel logger RBR.*

#### 2.5 | Mathematic two-dimensional model

Two-Dimensional hydrodynamic mathematical model is used to show the physical phenomena movement of ocean currents. DFlow modelling in 3D Delft enables the simulation of physical and chemical variations in coastal/estuarine environments. In this case, it includes wave, tidal, and water elevation changes caused by wind or waves, current flow caused by salinity or temperature gradients, sand and mud (sediment) transport, water quality, and changes in bathymetry/morphology of the beach, among others. Delft3D is also useful for operational purposes, such as forecasting storms, waves, and algae blooms (Deltares, 2011).

### 3 | RESULT AND DISCUSSION

#### 3.1 | Measurement of water level and bathymetry

Based on the field measurement, the bathymetry in Pekalongan Waters varies between 3–22.7 m (Exhibit 3). The results of the measurements and recording of water elevation indicated that the tidal type was mixed tides that tilt twice daily, with the tide receding twice in a single day. The initial tide's shape was not identical to the shape of the second wave, and it was diurnally inclined (Table S2). Using the least square method, the harmonic analysis calculation yielded the amplitude ( $A$ ) and phase difference ( $\phi$ ) values. Separating the components of the water level was applied to the measurement results. The results indicated that the astronomical and residual components played a role in forming the water level, respectively; each component was assigned a percentage of dominance: 92.6% for the astronomical component and 7.4% for the residual component.

#### 3.2 | Hydrodynamic modeling

The data from the model are calculated and compared with the data from the measurement results in the waters, the data being tested are currents and tides at the measurement location. Water level elevation data were obtained from tide recording with RBR Virtuose. Current data is measurement data measured using the Acoustic Doppler Current Profiler (ADCP) XR. Hydrodynamic simulation is a simulation in one scenario during the eastern season (June), the validation results will determine the accuracy during measurement ( $3 \times 24$  h) using the simulation results in the future.

*The data from the model are calculated and compared with the data from the measurement results in the waters, the data being tested are currents and tides at the measurement location. Water level elevation data were obtained from tide recording with RBR.*

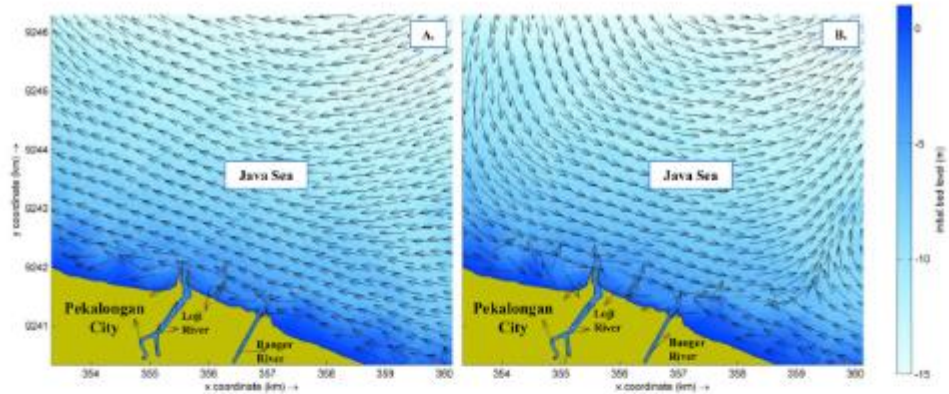
According to hydrodynamic simulations, the difference in water level between modelling and measurement is 0.0349 m, with a percentage of error of 3.24% for the overall value of data (Figure S1). The error

value for the ocean current velocity component revealed differences of up to 0.069 m/s in the east-west component flows. The north-south current velocity component ( $v$ -velocity) is 0.019 m/s different. Both of these components were visually compared using a scatter graph and have an error of 18.9% (Figure S2). The validation in this model used the RMS (Root Mean Square) method where RMS is a non-dimensional value to indicate a match for two kinds of data (Evans, 1993; Hutasuht et al., 2022; Wulandari et al., 2021). These validation values are acceptable and can be used in conjunction with pollutant-tracer simulation. Evans (1993) also explain the tolerance limit for water level is 0.1 m while the speeds to within 0.2 m/s show that the model can be accepted with a small error tolerance. The model data was calculated and compared to the data from the measurement results in the waters; the data being compared are the currents and tides at the measurement location. Determine the location of current measurements using the area sampling method, which was used to determine the sample size when the data source is extremely broad and the sampling area is predetermined (Kowalik & Murty, 1993). Exhibit 4 depicts the current pattern in each condition. The back and forth movement of the current reflects the tidal and tidal conditions in Pekalongan waters. At low tide, the Loji River is seen pushing the outflow from the river body, with a flow velocity of 0.1–0.35 m/s. Banger River, a nearby river, exhibits the same characteristics with a speed of 0.2–0.3 m/s. The fastest currents are found off the coast of Pekalongan, with velocity intervals of 0.5–0.65 m/s.

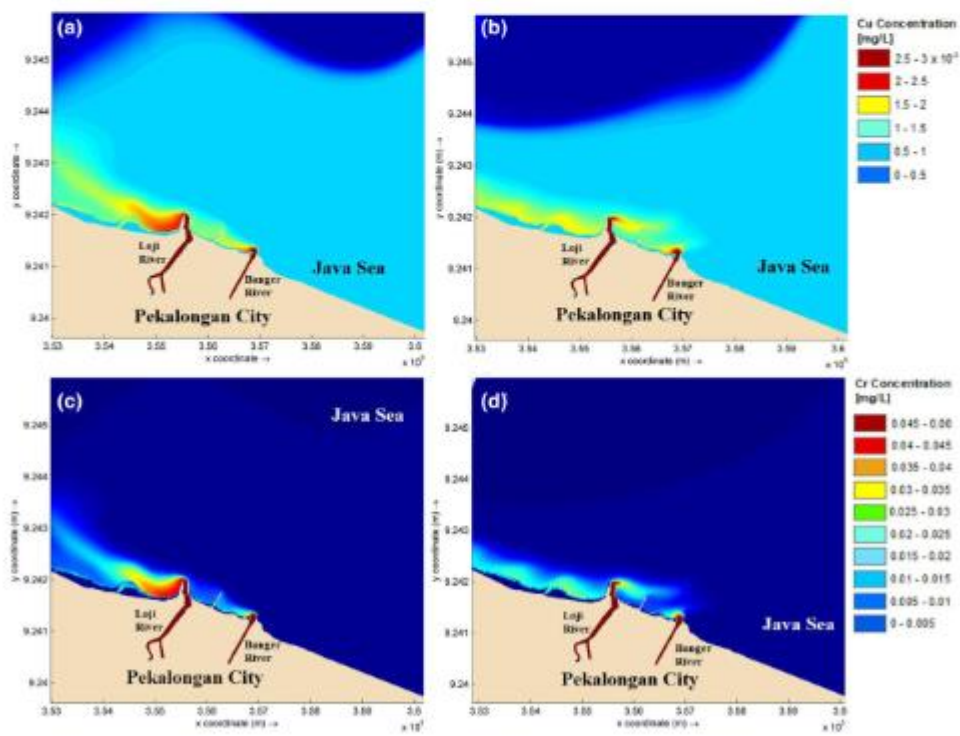
#### 3.3 | Advection-diffusion of copper (Cu) and chromium (Cr) concentrations

The comparison of modelling and field sampling for Cu and Cr parameters demonstrates the difference in samples taken at the time of measurement; samples were not taken simultaneously, for example, during low tide and ebb tide approaching the post. According to the simulation results, Cr has a minimum-maximum value variation of approximately 0.005 mg/L and 0.1056 mg/L compared to the spatial distribution results at each sample point, which show a minimum of 0.0009 mg/L and a maximum of 0.091 mg/L. For each parameter, the average error (mean relative error) was 0.2844 mg/L for Cr and 0.35 mg/L for Cu. The spatial distribution pattern of Cu and Cr contaminants in Pekalongan was depicted during the spring tide phase, when the ebb and flood tide conditions exist (Exhibit 5). Cu and Cr distributions follow the current pattern due to flow as a material transport agent contained in water bodies. Cr was concentrated in the mouth areas of the Loji and Banger rivers. These two rivers are the pollutant sources. Flow acts as a transport agent for material contained within bodies of water, ensuring that Cu and Cr distributions follow the current pattern. The current pattern of movement was southeast, east, and some vectors move northeast. The pattern of spatial dispersion was also observed in the concentration distributions of Cu and Cr. Cu and Cr concentrations as shown in Exhibit 2 indicated that Cu concentrations were less than 0.0002 mg/L. Meanwhile, the Cr concentration in the mouth of the Loji river was less than 0.009 mg/L, except for St





**EXHIBIT 4** Simulation of direction of surface current during spring tide in marine environment of Pekalongan: ebb tide conditions (A), flood tide conditions (B). [Color figure can be viewed at [wileyonlinelibrary.com](http://wileyonlinelibrary.com)]



**EXHIBIT 5** Spatial distribution maps of the heavy metals in the marine environment of Pekalongan: Concentration distribution of copper during ebb tide condition (A) and flood tide condition (B); and concentration distribution of chromium during ebb tide condition (C) and flood tide condition (D). [Color figure can be viewed at [wileyonlinelibrary.com](http://wileyonlinelibrary.com)]

**EXHIBIT 6** Cases of heavy metals in some countries

Location	Sample	Cu	Cr	References
Loji and Banger Rivers, Pekalongan, Indonesia	Waters	<0.002 mg/L	<0.009–0.0553 mg/L	This study
Port Phillip Bay, Australia	Waters	0.47 ± 0.05 µg/kg	0.04 ± 0.02 µg/kg	(Fabris et al., 1999)
Trengganu, Malaysia	Species	56.09 ± 8.69 µg/g	1.34 ± 0.24 µg/g	(Rahouma et al., 2013)
Hooghly–Matla estuarine system, India	Sediments	51.8–189 mg/kg	27.7–66 mg/kg	(Ghosh et al., 2019)
Saigon river, Vietnam	Waters	0.92–13.3 µg/L	0.036–0.849 µg/L	(Strady et al., 2017)
Turag River, Bangladesh	Waters	0.09 ppm	0.024 ppm	(Afrin et al., 2015)
Taihu Lake, China	Waters	6.844 µg/L	0.472 µg/L	(Tao et al., 2012)
USA, Gulf of Mexico	Sediments	35 mg/kg	110 mg/kg	(Vázquez-Botello et al., 2004)
Tugu District Coast, Semarang, Indonesia	Waters	<0.005–4.42 ppm	0.15–11.77 ppm	(Suryono, 2017)
Banjir Kanal Barat, Semarang, Indonesia	Sediments	30.54–55.09 ppm	-	(Maslukah, 2013)
Banjir Kanal Timur, Semarang, Indonesia	Sediments	-	5.786 ppm	(Wulandari, 2012)
Marunda Beach, Jakarta, Indonesia	Sediments	-	12.79 ppm	(Nurhidayah et al., 2020)
Tanjung Mas Harbor, Semarang, Indonesia	Waters	-	0.14 ppm	(Suryono and Djunaedi, 2017)
Citarum River, Indonesia	Sediments	47.5 mg/kg	8.8 mg/kg	(Yenny et al., 2020)

11 in the upper Banger River, where it was 0.0103 mg/L. The low concentration of Cr downstream (St 7) of the Loji river was due to the shape of the mouth river, causing the concentration of the heavy metal to accumulate prior to the river's mouth (St 5). The highest concentration of Cr was located in the mouth of Banger River (St 6), due to the outflow being openly free and thus accumulating not far from the mouth. According to Indonesian regulations, the copper concentration was within the standard threshold, but the chromium concentration, particularly in the river and mouth river of the Loji River, has exceeded the standard level. This serves as a warning to the Pekalongan City area that it requires additional evaluation in order to control heavy metal contamination. We can compare the Cr data in other countries and find that the majority of the area is less polluted than Pekalongan City. Suryono and Djunaedi (2016), Maslukah (2013), and Wulandari (2012), Nurhidayah et al. (2020), which explain the value of Cu and Cr in Jakarta and Semarang, show that Cr in Semarang ranges from 0.14–11.77 ppm, while Cu in Semarang ranges from 0.005–55.09 ppm. Copper and chromium in Jakarta are shown in Exhibit 6. It is 47.5 ppm for Cu and 8.8–12.79 ppm for Cr. The copper and chromium concentrations at various locations in Exhibit 6 exceed the quality standard established by Indonesia Republic Government Regulation No 22 of 2021. Except for the chromium and copper concentrations in Saigon River, Vietnam (Strady et al., 2017), which are lower than the copper and chromium standards in the Loji and Banger Rivers, these results also show values higher than the average copper and chromium values on the Loji and Banger Rivers. Copper is most valuable in Trengganu, Malaysia (Rahouma et al., 2013). The study's lowest point is at the con-

fluence of the Loji and Banger rivers in Pekalongan, Indonesia. The Gulf of Mexico in the United States of America had the highest chromium concentration (Vázquez-Botello et al., 2004), while the Loji and Banger rivers in Pekalongan, Indonesia, had the lowest. The quality of water contaminated by heavy metals is regulated by Government Regulation No. 22 of 2021 on Environmental Protection and Management, which establishes a quality standard threshold for each designation, including ports, marine tourism, and marine biota. According to Central Java regulation no 13 of 2018 on the Zonation Plan for Coastal Areas and Small Islands, Loji and Banger river estuaries, are designated as a fisheries zone.

#### 4 | CONCLUSION

The distribution of Cr and Cu follows the current pattern due to the tidal conditions, the ebb and flow of the current as a material transport agent contained in water bodies. The residual component dominated the water level by 7.4%, while the astronomical component influenced by 92.6%. Hydrodynamic simulations show a 0.0349 m water level difference between modeling and measurement, with a 3.24% data error. The ocean current velocity component error showed east-west component flows of up to 0.069 m/s. North-south current velocity (*v*-velocity) differs by 0.019 m/s. A scatter graph showed 18.9% error for these components. Pollutant-tracer simulations can use these validation values. At low tide, the Loji River pushes outflow at 0.1–0.35 m/s. A nearby river, Banger River, has the same characteristics at 0.2–0.3 m/s. The

fastest currents out of Pekalongan are 0.5–0.65 m/s. The results of the simulation show that Cr has a minimum-maximum value variation of roughly 0.005 mg/L and 0.1056 mg/L, in contrast to the spatial distribution results at each sample point, which show a minimum of 0.0009 mg/L and a maximum of 0.091 mg/L. The Banger River Estuary along Slamiran Beach had the highest chromium concentration at 0.1056 mg/L. Due to the detection limit of 0.002 mg/L, the Cu concentration in all sampling locations is less than 0.002 mg/L, exceeding the quality standard threshold of Government Regulation No. 22 of 2021 on Environmental Protection and Management, which is 0.005 mg/L for marine biota.

#### ACKNOWLEDGMENTS

This work was supported by the Faculty of Fisheries and Marine Sciences Universitas Diponegoro provided funding, that fund was sourced besides APBN Faculty of Fisheries and Marine Sciences, Universitas Diponegoro number 008/UN.7.5.10.2/PP/2020 and Universitas Diponegoro World Class University-Adjunct Professor Program 2022, Nomor: 232/UN7.A/HK/IX/2022, We would like to thank the Nuffic in OKP Project—Dutch Ministry of Foreign Affairs, the Bapeda Pekalongan City and the DLH Pekalongan City.

#### DATA AVAILABILITY STATEMENT

The data that support the findings of this study are available on request from the corresponding author. The data are not publicly available due to privacy or ethical restrictions.

#### ORCID

Aris Ismanto  <https://orcid.org/0000-0003-3306-2032>

#### REFERENCES

- Afrin, R., Mia, M., & Akter, S. (2015). Investigation of Heavy Metals (Pb, Cd, Cr, Cu, Hg and Fe) of the Turag River in Bangladesh. *Journal of Environmental Science and Natural Resources*, 7(2), 133–136. <https://doi.org/10.3329/jesnr.v7i2.22221>
- Ahmad, R., Amalia, D., Haggerty, M., Putra, B. P., Pratomo, I., & Emily Schlickman, J. T. (2010). *Colored water: Assessment of climate change vulnerability in Kelurahan Pabean Pekalongan, Central Java. UN HABITAT.*
- Amin, B., Ismail, A., Arshad, A., Yap, C. K., & Kamarudin, M. S. (2009). Anthropogenic impacts on heavy metal concentrations in the coastal sediments of Dumai, Indonesia. *Environmental Monitoring Assessment*, 148, 291–305. <https://doi.org/10.1007/s10661-008-0159-z>
- ASTDR (2002). Toxicological profile for copper. ATSDR's Toxicol. Profiles. [https://doi.org/10.1201/9781420061888\\_ch123](https://doi.org/10.1201/9781420061888_ch123)
- Caddy, J. F. (2000). Marine catchment basin effects versus impacts of fisheries on semi-enclosed seas. *ICES Journal of Marine Sciences*, 57, 628–640. <https://doi.org/10.1006/jmsc.2000.0739>
- Deltares. (2011). *Functional Specifications Delft3D*. Netherlands: Deltares.
- Evans, G. P. (1993). A framework for marine and estuarine model specification in the UK - Foundation of water research, The UK.
- Fabris, G. J., Monahan, C. A., & Batley, G. E. (1999). Heavy metals in waters and sediments of Port Phillip Bay, Australia. *Marine and Freshwater Research*, 50(6), 503–513. <https://doi.org/10.1071/MF98032>
- Firmansyah, Y. W., Setiani, O., & Darundiaty, Y. H. (2020). Spatial analysis of pollution of lead heavy metal (Pb) in the flow of river (Banger and Pekalongan) Pekalongan city. *IOSR Journal of Environmental Science Toxicology and Food Technology*, 14, 36–42. <https://doi.org/10.9790/2402-1405023642>
- Fitriyah, A. W., Utomo, Y., & Kusumaningrum, I. K. (2013). Analysis of copper (Cu) content in water and sediment in the Surabaya river. *Journal of Online Universitas Negeri Malang*, 2, 1–8.
- Ghosh, S., Bakshi, M., Kumar, A., Ramarathan, A. L., Biswas, J. K., Bhattacharyya, S., Chaudhuri, P., Shaheen, S. M., & Rinklebe, J. (2019). Assessing the potential ecological risk of Co, Cr, Cu, Fe and Zn in the sediments of Hooghly-Matla estuarine system, India. *Environmental Geochemistry and Health*, 41(1), 53–70. <https://doi.org/10.1007/s10653-018-0119-7>
- Handayani, W., Kristijanto, A. I., & Hunga, A. I. R. (2018). Behind the eco-friendliness of 'batik warna alam': Discovering the motives behind the production of batik in Jarum village, Kliten, Wacana, 19, 235–256. <https://doi.org/10.17510/wacana.v19i1.673>
- Hassan, M. A., & Nemr, A. E. (2017). Advanced oxidation processes (AOPs) for wastewater treatment advanced oxidation processes of some organic pollutants in fresh and sea water. *American The Journal of Environmental Engineering*, 1, 64–67. <https://doi.org/10.11648/j.ajee.20170103.11>
- Hutasuhut, A., Ismanto, A., Rochaddi, B., Maslukah, L., & Widiaratih, R. (2022). Sediment suspension distribution models in east canal flood estuary waters, Semarang, Central Java, Indonesia. *Tropical Aquatic and Soil Pollution*, 2(2), 76–89. <https://doi.org/10.53623/tasp.v2i2.93>
- Kowalik, Z., & Murty, T. S. (1993). Numerical modeling of ocean dynamics. *Advanced Series on Ocean Engineering*. WORLD SCIENTIFIC, 00–00. <https://doi.org/10.1142/1970>
- Madhav, S., Ahmad, A., Singh, P., & Mishra, P. K. (2018). A review of textile industry: Wet processing, environmental impacts, and effluent treatment methods. *Environmental Quality Management*, 27, 31–41. <https://doi.org/10.1002/tqem.21538>
- Maslukah, L. (2013). The Relationship between Heavy Metal Concentrations of Pb, Cd, Cu, Zn with Organic Matter and Grain Size in Sediment in the West Flood Estuary, Semarang. *Bul. Oseanografi Mar.* 2, 55–62. <https://doi.org/10.14710/buloma.v2i3.6951>
- Mratihatani, A. S., & Susilowati, I. (2013). Towards clean river management in the batik industrial area which is dense of liquid waste (empirical study: Pekalongan River Watershed in Pekalongan City). *Diponegoro Journal of Economics*, 2, 1–12.
- Nurhidayah, T., Maslukah, L., Wulandari, S. Y., & Kurnia, K. (2020). Vertical Distribution of Pb, Zn, Cr and Their Relationship to Organic Carbon Sediment at Marunda Beach, Jakarta. *Bul. Oseanografi Mar.* 9, 125–132. <https://doi.org/10.14710/buloma.v9i2.27283>
- Oginawati, K., Suharyanto, S., SH, S., G. M., Chazanah, N., Kusumah, D., & SW, F. N. (2022). Investigation of dermal exposure to heavy metals (Cu, Zn, Ni, Al, Fe and Pb) in traditional batik industry workers. *Hefiyon*, 8, e08914. <https://doi.org/10.1016/j.heliyon.2022.e08914>
- Ongkosono, O. S. R., & Suyarso. (1989). *Pasang surut*. Lembaga Ilmu Pengetahuan Indonesia (LIPI), Pusat Pengembangan Oseanologi, Jakarta.
- Rahouma, M., Shuhaimi-Othman, M., & Cob, Z. C. (2013). Assessment of Selected Heavy Metals (Zn, Mn, Pb, Cd, Cr and Cu) in Different Species of Acetes Shrimp from Malacca, Johor and Terengganu, Peninsular Malaysia. *J. Environ. Sci. Technol.* 6, 50–56. <https://doi.org/10.3923/jest.2013.50.56>
- Rahman, Z., & Singh, V. P. (2019). The relative impact of toxic heavy metals (THMs) (arsenic (As), cadmium (Cd), chromium (Cr(VI)), mercury (Hg), and lead (Pb)) on the total environment: an overview. *Environmental Monitoring Assessment*, 191, 00–00. <https://doi.org/10.1007/s10661-019-7528-7>
- Samchetshabam, G., Hussain, A., Gon Choudhury, T., Gita, S., & Sohollars, P. (2017). Impact of textile dyes waste on aquatic environments and its treatment.
- Santi, S., Tiwaw, V. M. A., & Samchetshabam, G. (2017). Analysis of copper (Cu) and lead (Pb) in seawater and sediment in Loli coastal waters,

- Banawa district, Donggala regency. *J. Akad. Kim.*, 6, 241. <https://doi.org/10.22487/j24775185.2017.v6i4.9456>
- Shanker, A. K., & Venkateswarlu, B. (2011). Chromium: Environmental pollution, health effects and mode of action. *Encycl. Environ. Heal.*, 650–659. <https://doi.org/10.1016/B978-0-444-52272-6.00390-1>
- Strady, E., Dang, V. B. H., Némery, J., Guédron, S., Dinh, Q. T., Denis, H., & Nguyen, P. D. (2017). Baseline seasonal investigation of nutrients and trace metals in surface waters and sediments along the Saigon River basin impacted by the megacity of Ho Chi Minh (Vietnam). *Environmental Science and Pollution Research*, 24(4), 3226–3243. <https://doi.org/10.1007/s11356-016-7660-7>
- Stern, D. N. (2010). *Forms of vitality: Exploring dynamic experience in psychology, the arts, psychotherapy, and development*. OUP Oxford.
- Suryono, C. A., & Djunaedi, A. (2017). Heavy metals Pb, Cr and Cd in Tanjung Mas Port Waters, Semarang. *J. Kelaut. Trop.*, 20, 25. <https://doi.org/10.14710/jkt.v20i1.1350>
- Syakti, A. D., Demelas, C., Hidayati, N. V., Rakasiwi, G., Vassalo, L., Kumar, N., Prudent, P., & Doumenq, P. (2015). Heavy metal concentrations in natural and human-impacted sediments of Segara Anakan Lagoon, Indonesia. *Environmental Monitoring Assessment*, 187, 00–00. <https://doi.org/10.1007/s10661-014-4079-9>
- Tao, Y., Zhang, Y., Meng, W., & Hu, X. (2012). Characterization of heavy metals in water and sediments in Taihu Lake, China. *Environmental Monitoring and Assessment*, 184(7), 4367–4382. <https://doi.org/10.1007/s10661-011-2270-9>
- Tchounwou, P. B., Yedjou, C. G., Patlolla, A. K., & Sutton, D. J. (2012). *Molecular, clinical and environmental toxicology Volume 3: Environmental Toxicology, Molecular, Clinical and Environmental Toxicology*. <https://doi.org/10.1007/978-3-7643-8340-4>
- Vatria, B. (2010). Various human activities that can cause degradation of coastal ecosystems and their impact. *Journal of Belian*, 9, 47–54.
- Vázquez-Botello, Villanueva-Fragoso, A. S., Rosales-Hoz, L. (2004). Metals distribution and contamination in the Gulf of Mexico. *Environ. Anal. Gulf Mex.* 425–447.
- Wulandari, S. Y. (2012). Status of the Semarang East Flood Canal in terms of Chromium Heavy Metal Levels in Water, Sediment and Soft Tissue Blood Shellfish (*Anadara granosa*). *Bul. Oseanografi Mar.* 1, 1–7. <https://doi.org/10.14710/buloma.v1i3.6903>
- Wulandari, S. Y., Yusuf, M., & Muslim, M. (2014). Study of concentration and distribution of water quality parameters in Genuk Coastal Waters, Semarang. *Bul. Oseanografi Mar.* 3, 9. <https://doi.org/10.14710/buloma.v3i1.11213>
- Wulandari, S. Y., Karna, R. O., Bambang, Y., Aris, I., Muslim, Jarot, M., Hendry, S., & Siti, M. (2021). Microplastics model distribution in Semarang Waters. *Journal of Chemistry and Environment*, 25, 109–120.
- Yenny, M. O. P., Hartono, A., Anwar, S., & Kang, Y. (2020). Assessment of heavy metals pollution in sediment of Citarum River, Indonesia. *JPSL*, 10(4), 584–593. <http://dx.doi.org/10.29244/jpsl.10.4.584-593>

#### SUPPORTING INFORMATION

Additional supporting information can be found online in the Supporting Information section at the end of this article.

**How to cite this article:** Ismanto, A., Hadibarata, T., Widada, S., Atmodjo, W., Satriadi, A., Siagian, H., & Safinatunnajah, N. (2023). Heavy metal contamination in the marine environment of Pekalongan, Indonesia: Spatial distribution and hydrodynamic modeling. *Environmental Quality Management*, 1–10. <https://doi.org/10.1002/tqem.21978>